

**Overview**

For the week ending Feb. 06, 2016, the following pathogens were detected with a low level of testing: Coronavirus HKU1, Human metapneumovirus, Influenza A, Parainfluenza 1, RSV, Rhinovirus/Enterovirus.

**About PEWSS**

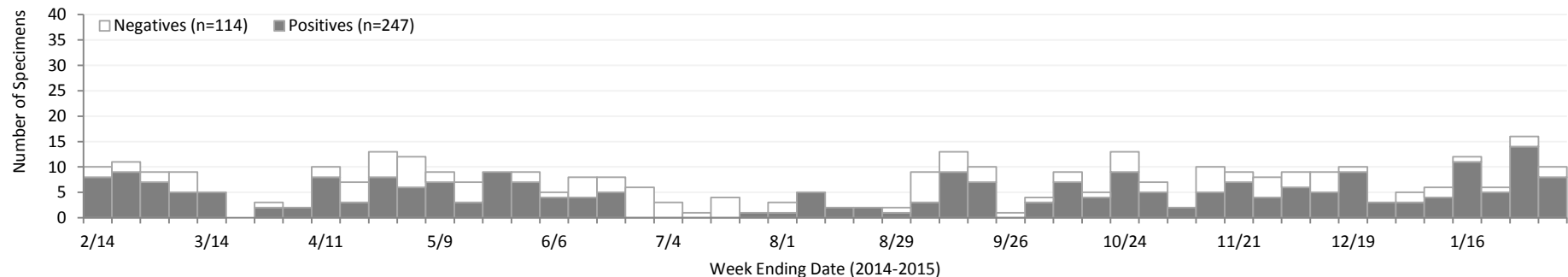
For additional information about PEWSS, please contact the SNHD Office of Epidemiology at 702.759.1299. PEWSS program description, methodology, and weekly bulletins can be viewed at <http://www.southernnevadahealthdistrict.org/stats-reports/influenza.php>

**Table 1. Current Testing results**

Testing Category	Last Week	Four Weeks	Comment
Adenovirus	—	Sporadic	
Chlamydomphila pneumoniae	—	—	Not detected in 4 months (since Oct 10, 2015)
Coronavirus HKU1	Detected	High	
Coronavirus NL63	-	High	
Coronavirus 229E	—	—	Not detected in 11 months (since Mar 14, 2015)
Coronavirus OC43	—	Sporadic	
Human metapneumovirus	Detected	High	
Influenza A	Detected	Moderate	Strains detected: H1N1: 9 (100%)
Influenza B	—	—	Has not been detected in the 2015-2016 influenza surveillance season
Mycoplasma pneumoniae	-	Sporadic	
Parainfluenza 1	Detected	Sporadic	
Parainfluenza 2	—	—	Not detected in 12 months (since Feb 21, 2015)
Parainfluenza 3	—	—	Not detected in 6 months (since Aug 8, 2015)
Parainfluenza 4	—	Sporadic	
Respiratory syncytial virus (RSV)	Detected	High	
Rhinovirus/Enterovirus	Detected	Very low	
Specimen Volume	Low	Moderate	

— Zero positives \* None tested

**Figure 1. Weekly number of specimens tested**



**Figure 2. Weekly positive counts for organisms identified**

