



Overview

For the week ending 2/1/2014, the following pathogens were detected with a moderate volume of testing: Coronavirus HKU1, Coronavirus NL63, Coronavirus OC43, Human metapneumovirus, Influenza A, Influenza B, RSV

About PEWSS

Please contact Linh Nguyen, PhD, MPH at the SNHD Office of Epidemiology at 702.759.1300. PEWSS program description, methodologies, and weekly bulletins can be viewed at <http://www.southernnevadahealthdistrict.org/stats-reports/influenza.php>.

Table 1. Current Testing results

Testing Category	Last Week	Four Weeks	Trend	Comment
Adenovirus	—	Sporadic	→	
Chlamydomphila pneumoniae	—	—		‡
Coronavirus HKU1	Detected	Detected*		Coronaviruses and rhinoviruses cause the majority of common cold symptoms
Coronavirus NL63	Detected	Detected*		
Coronavirus 229E	—	—		‡
Coronavirus OC43	Detected	Detected*		
Human metapneumovirus	Detected	Moderate	↗	Detected at moderate levels over the past four weeks
Influenza A	Detected	Moderate	→	13 flu-related deaths and 174 hospitalizations reported in Clark County since Oct 2013
Influenza B	Detected	Sporadic	→	
Mycoplasma pneumoniae	—	Detected*		
Parainfluenza 1	—	Sporadic	→	
Parainfluenza 2	—	—		
Parainfluenza 3	—	—		†
Parainfluenza 4	—	—		‡
Respiratory syncytial virus (RSV)	Detected	Moderate	→	Detected at moderate levels over the past four weeks
Rhinovirus/Enterovirus	—	Detected*		
Specimen Volume	Moderate	Moderate	→	

* Insufficient historical data exists to determine the level of detection

† Not detected in the past 12 months

‡ Added to PEWSS in December 2013, has yet to be identified

Figure 1. Weekly number of specimens tested

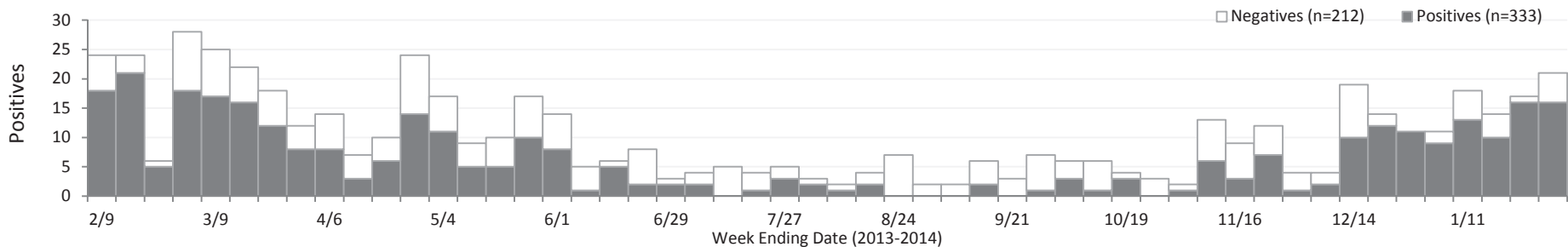


Figure 2. Weekly positive counts for organisms identified

