

SNHD Pediatric Early Warning Sentinel Surveillance (PEWSS) Report: January 30, 2013

All Reporting Sites, Through the Week Ending January 26, 2013

PEWSS reports are disseminated weekly by email, fax, and online at <http://www.southernnevadahealthdistrict.org/stats-reports/influenza.php>.

For questions about PEWSS, please contact Linh Nguyen, PhD at the SNHD Office of Epidemiology at 702.759.1300.

General Update

During the week ending January 26, 2013, the following viruses were identified through PEWSS with a high volume of testing (Fig. 1): Influenza A, Influenza B, Adenovirus, Parainfluenza 3 and RSV.

Over the past five weeks (Tables 1 & 2), the following were identified in the community through PEWSS:

Influenza A and RSV have been circulating at high levels.

Influenza B, Adenovirus and Parainfluenza 3 have been circulating at low levels.

Human Metapneumovirus, Parainfluenza 1 and Parainfluenza 2 have been sporadically identified.

Table 1 - Testing Results, Current Week and Previous Four Weeks

PCR Testing Results	Week Ending										Past 5 Weeks Circulation Levels
	12/29		1/5		1/12		1/19		1/26		
	n	%	n	%	n	%	n	%	n	%	
All negative	6	29%	6	29%	10	34%	6	17%	4	12%	
Influenza A Positive	2	10%	6	29%	9	31%	12	34%	18	53%	High
Influenza B Positive	5	24%	2	10%	3	10%	3	9%	2	6%	Low
Adenovirus Positive	1	5%	1	5%	1	3%	1	3%	1	3%	Low
Human Metapneumovirus Positive	0	0%	0	0%	0	0%	1	3%	0	0%	Sporadic
Parainfluenza 1 Positive	0	0%	0	0%	1	3%	0	0%	0	0%	Sporadic
Parainfluenza 2 Positive	2	10%	0	0%	0	0%	0	0%	0	0%	Sporadic
Parainfluenza 3 Positive	2	10%	0	0%	2	7%	1	3%	1	3%	Low
RSV Positive	6	29%	7	33%	5	17%	13	37%	9	26%	High
Co-infections	2	10%	1	5%	2	7%	2	6%	1	3%	
Specimens Tested	21	-	21	-	29	-	35	-	34	-	High Volume

Table 2 - Influenza A Typing, Current Week and Previous Four Weeks

Influenza A Typing (% of influenza A)	Week Ending										5-Week Totals	
	12/29		1/5		1/12		1/19		1/26		n	%
	n	%	n	%	n	%	n	%	n	%		
Influenza A 2009 H1N1	0	0%	0	0%	0	0%	2	17%	1	6%	3	6%
Influenza A H1	0	0%	0	0%	0	0%	0	0%	0	0%	0	0%
Influenza A H3	2	100%	6	100%	9	100%	10	83%	17	94%	44	94%

Figure 1 - Weekly Number of Specimens Tested

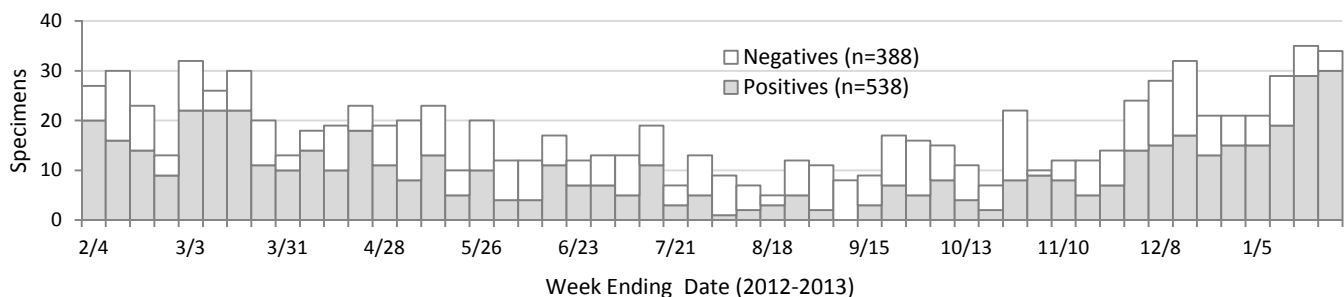
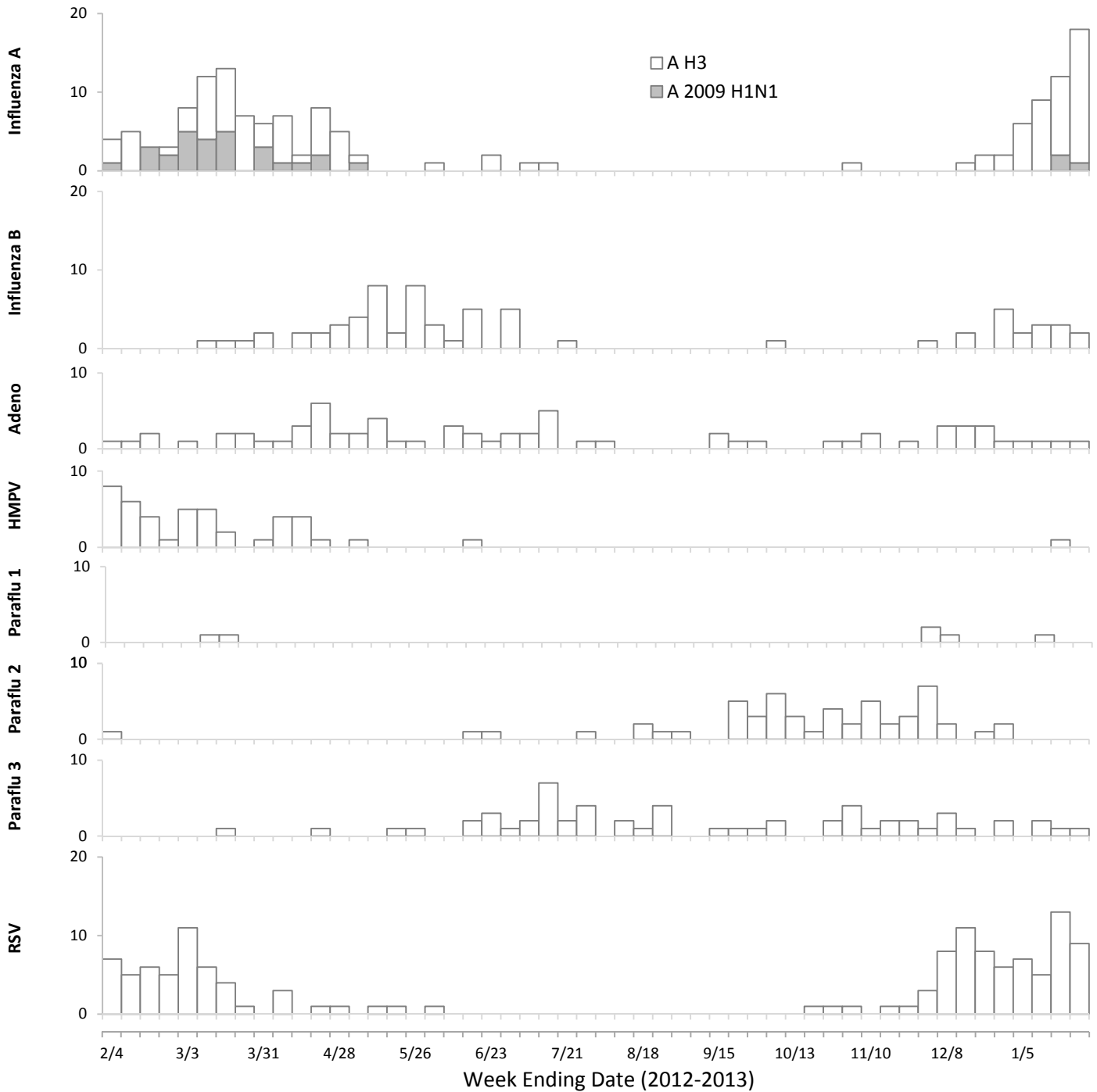


Figure 2. Weekly Positive Counts for Organisms Tested



Other News and Information

A very high number of respiratory pathogens are circulating in Southern Nevada this week (Table 1; Fig. 2). Of these, influenza A (which includes the 2009 H1N1 strain) and RSV continue to circulate at high levels.

The Influenza Hospitalization Surveillance Network (FluSurv-NET) conducts population-based surveillance for laboratory-confirmed influenza-related hospitalizations. The most affected group is those ≥ 65 years, which accounted for 50% of reported laboratory-confirmed influenza-associated hospitalization cases. The most commonly reported underlying medical conditions among hospitalized adults were cardiovascular disease, metabolic disorders, obesity, and chronic lung disease (excluding asthma).