

SNHD Pediatric Early Warning Sentinel Surveillance (PEWSS) Report: January 16, 2013

All Reporting Sites, Through the Week Ending January 12, 2013

PEWSS reports are disseminated weekly by email, fax, and online at <http://www.southernnevadahealthdistrict.org/stats-reports/influenza.php>.

For questions about PEWSS, please contact Linh Nguyen, PhD at the SNHD Office of Epidemiology at 702.759.1300.

General Update

During the week ending January 12, 2013, the following viruses were identified through PEWSS with a high volume of testing (Fig. 1): Influenza A, Influenza B, Adenovirus, Parainfluenza 1, Parainfluenza 3 and RSV.

Over the past five weeks (Tables 1 & 2), the following were identified in the community through PEWSS:

Influenza A and RSV have been circulating at high levels.

Influenza B and Adenovirus have been circulating at low levels.

Parainfluenza 1, Parainfluenza 2 and Parainfluenza 3 have been sporadically identified.

Human Metapneumovirus has not been identified.

Table 1 - Testing Results, Current Week and Previous Four Weeks

PCR Testing Results	Week Ending										Past 5 Weeks Circulation Levels
	12/15		12/22		12/29		1/5		1/12		
	n	%	n	%	n	%	n	%	n	%	
All negative	15	47%	8	38%	6	29%	6	29%	10	34%	<div style="text-align: center;"> High Low Low Not Detected Sporadic Sporadic Sporadic High High Volume </div>
Influenza A Positive	1	3%	2	10%	2	10%	6	29%	9	31%	
Influenza B Positive	2	6%	0	0%	5	24%	2	10%	3	10%	
Adenovirus Positive	3	9%	3	14%	1	5%	1	5%	1	3%	
Human Metapneumovirus Positive	0	0%	0	0%	0	0%	0	0%	0	0%	
Parainfluenza 1 Positive	0	0%	0	0%	0	0%	0	0%	1	3%	
Parainfluenza 2 Positive	0	0%	1	5%	2	10%	0	0%	0	0%	
Parainfluenza 3 Positive	1	3%	0	0%	2	10%	0	0%	2	7%	
RSV Positive	11	34%	8	38%	6	29%	7	33%	5	17%	
Co-infections	1	3%	1	5%	2	10%	1	5%	2	7%	
Specimens Tested	32	-	21	-	21	-	21	-	29	-	

Table 2 - Influenza A Typing, Current Week and Previous Four Weeks

Influenza A Typing (% of influenza A)	Week Ending										5-Week Totals	
	12/15		12/22		12/29		1/5		1/12		n	%
	n	%	n	%	n	%	n	%	n	%		
Influenza A 2009 H1N1	0	0%	0	0%	0	0%	0	0%	0	0%	0	0%
Influenza A H1	0	0%	0	0%	0	0%	0	0%	0	0%	0	0%
Influenza A H3	1	100%	2	100%	2	100%	6	100%	9	100%	20	100%

Figure 1 - Weekly Number of Specimens Tested

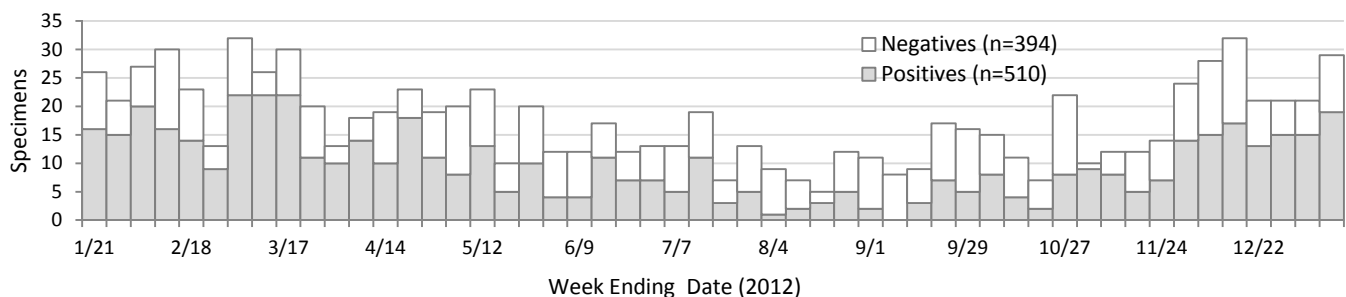
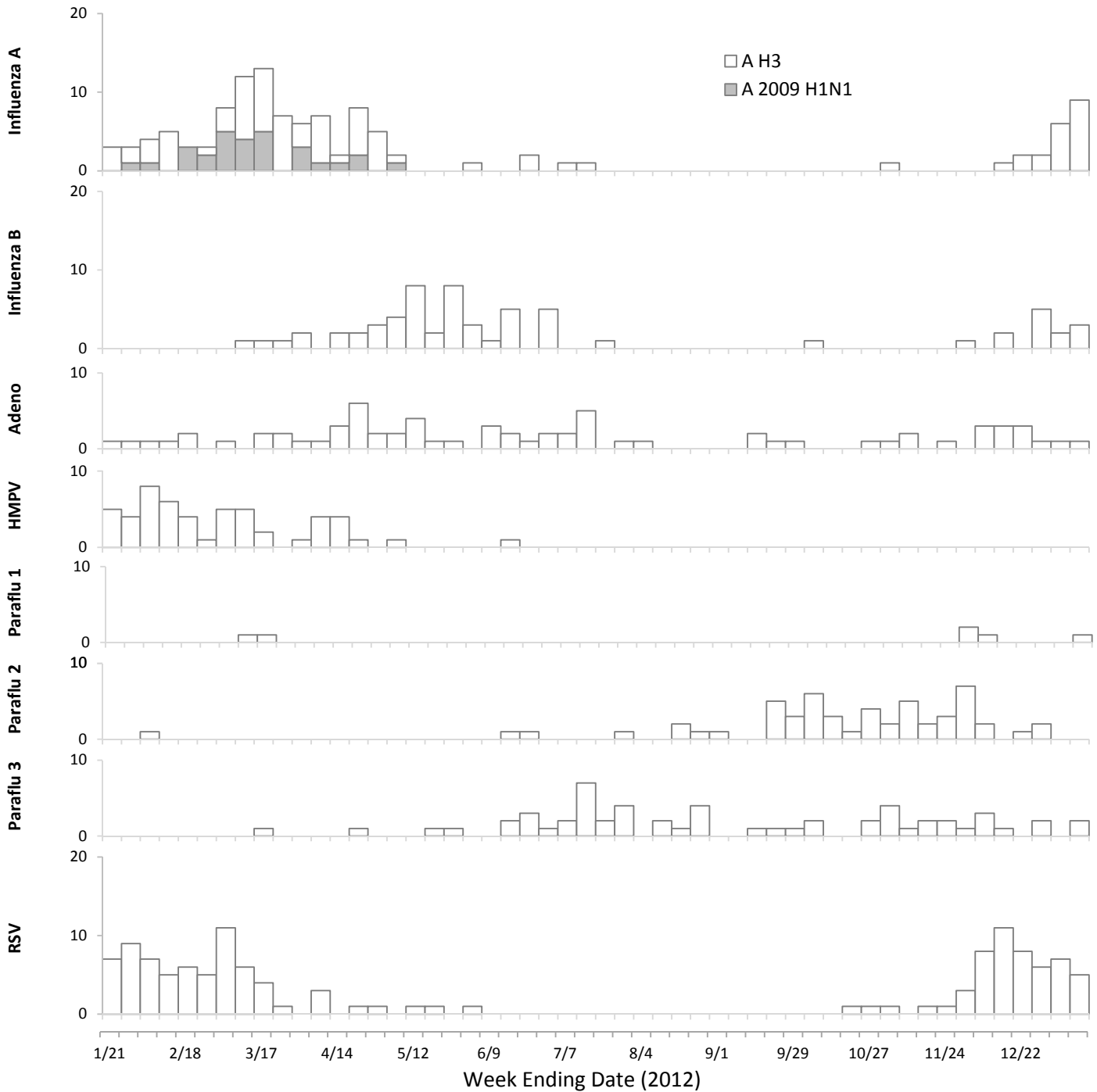


Figure 2. Weekly Positive Counts for Organisms Tested



Other News and Information

Many varieties of respiratory pathogens are circulating in Southern Nevada this week (Table 1; Fig. 2). Of these, influenza A and respiratory syncytial virus (RSV) continue to circulate at high levels in our community.

Typically, influenza begins to circulate in early January, peaks mid- to late-February, and returns to low levels of circulation by the end of March. Although most of the country has seen an unexpected early start to influenza season, no widespread shortage of influenza vaccines has been reported in Southern Nevada or in the US. Testing by the CDC indicates this season’s influenza vaccine is a good match to the circulating strains thus far.