

# SNHD Pediatric Early Warning Sentinel Surveillance (PEWSS) Report: January 02, 2013

All Reporting Sites, Through the Week Ending December 29, 2012

The PEWSS reports are disseminated weekly by email, fax, and online at <http://www.southernnevadahealthdistrict.org/stats-reports/influenza.php>. For questions about PEWSS, please contact the SNHD Office of Epidemiology at 702.759.1300.

## General Update

During the week ending December 29, 2012, the following viruses were identified through PEWSS with a moderate volume of testing (Fig. 1): Influenza A, Influenza B, Adenovirus, Parainfluenza 2, Parainfluenza 3 and RSV.

Over the past five weeks (Tables 1 & 2), the following were identified in the community through PEWSS: RSV has been circulating at high levels.

Adenovirus, Parainfluenza 2 and Parainfluenza 3 have been circulating at low levels.

Influenza A, Influenza B and Parainfluenza 1 have been sporadically identified.

Human Metapneumovirus has not been identified.

**Table 1 - Testing Results, Current Week and Previous Four Weeks**

PCR Testing Results	Week Ending										Past 5 Weeks Circulation Levels
	12/1		12/8		12/15		12/22		12/29		
	n	%	n	%	n	%	n	%	n	%	
All negative	10	42%	13	46%	15	47%	8	38%	4	24%	Sporadic Sporadic Low Not Detected Sporadic Low Low High
Influenza A Positive	0	0%	0	0%	1	3%	2	10%	2	12%	
Influenza B Positive	1	4%	0	0%	2	6%	0	0%	4	24%	
Adenovirus Positive	0	0%	3	11%	3	9%	3	14%	1	6%	
Human Metapneumovirus Positive	0	0%	0	0%	0	0%	0	0%	0	0%	
Parainfluenza 1 Positive	2	8%	1	4%	0	0%	0	0%	0	0%	
Parainfluenza 2 Positive	7	29%	2	7%	0	0%	1	5%	1	6%	
Parainfluenza 3 Positive	1	4%	3	11%	1	3%	0	0%	2	12%	
RSV Positive	3	13%	8	29%	11	34%	8	38%	6	35%	
Co-infections	0	0%	2	7%	1	3%	1	5%	2	12%	
Specimens Tested	24	-	28	-	32	-	21	-	17	-	Moderate Volume

**Table 2 - Influenza A Typing, Current Week and Previous Four Weeks**

Influenza A Typing (% of influenza A)	Week Ending										5-Week Totals	
	12/1		12/8		12/15		12/22		12/29		n	%
	n	%	n	%	n	%	n	%	n	%		
Influenza A 2009 H1N1	0	-	0	-	0	0%	0	0%	0	0%	0	0%
Influenza A H1	0	-	0	-	0	0%	0	0%	0	0%	0	0%
Influenza A H3	0	-	0	-	1	100%	2	100%	2	100%	5	100%

**Figure 1 - Weekly Number of Specimens Tested**

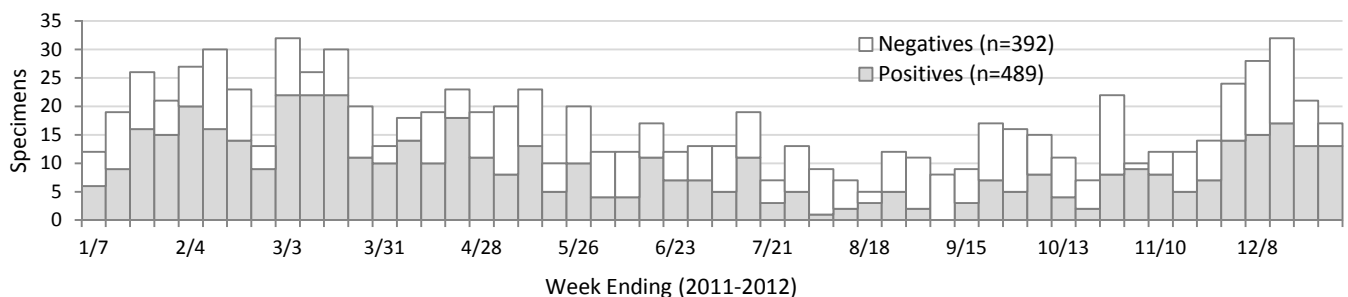
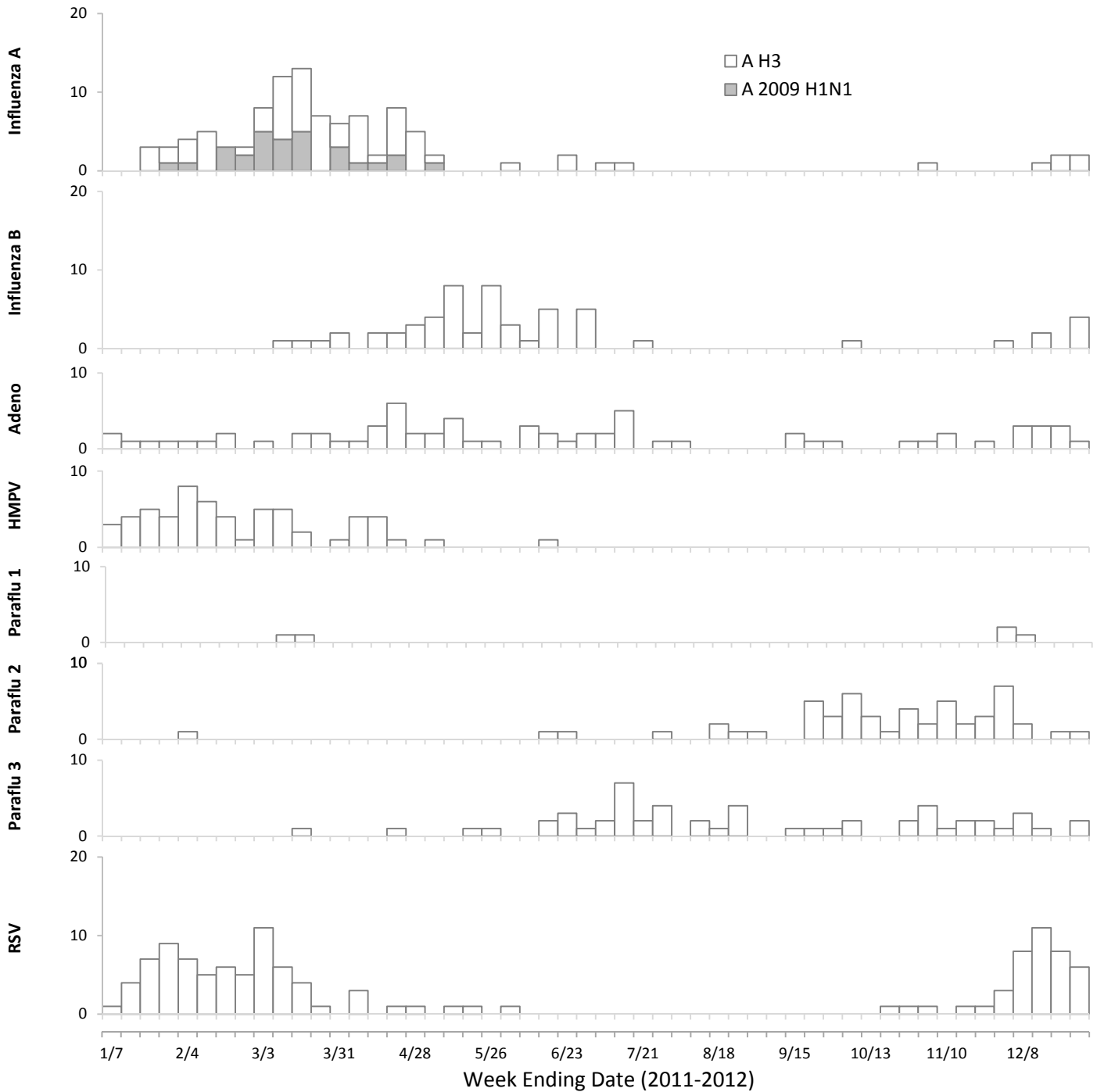


Figure 2. Weekly Positive Counts for Organisms Tested



**Other News and Information**

Respiratory syncytial virus (RSV) continues to circulate at high levels in Southern Nevada (Table 1; Fig. 2).

The high number of respiratory viruses circulating in our community during this surveillance period (Fig. 2) may account for the detection of Influenza B, RSV, and Adenovirus in a single test specimen collected from a pediatric patient. This is the first time PEWSS detected a co-infection of three respiratory viruses in one ill person since the inception of the program.