

SNHD Pediatric Early Warning Sentinel Surveillance (PEWSS) Report: May 30, 2012

All Reporting Sites, Through the Week Ending May 26, 2012

The PEWSS reports are disseminated weekly by email, fax, and online at <http://www.southernnevadahealthdistrict.org/stats-reports/influenza.php>. For questions about PEWSS, please contact the SNHD Office of Epidemiology at 702.759.1300.

General Update

During the week ending May 26, 2012, the following viruses were identified through PEWSS with a moderate volume of testing (Fig. 1): Influenza B, Adenovirus and Parainfluenza 3.

Over the past five weeks (Tables 1 & 2), the following were identified in the community through PEWSS:

Influenza B has been circulating at high levels.

Adenovirus has been circulating at low levels.

Influenza A, Human Metapneumovirus, Parainfluenza 3 and RSV have been sporadically identified.

Parainfluenza 1 and Parainfluenza 2 have not been identified.

Table 1 - Testing Results, Current Week and Previous Four Weeks

PCR Testing Results	Week Ending										Past 5 Weeks Circulation Levels
	4/28		5/5		5/12		5/19		5/26		
	n	%	n	%	n	%	n	%	n	%	
All negative	8	42%	12	60%	10	43%	5	50%	10	56%	Sporadic High Low Sporadic Not Detected Not Detected Sporadic Sporadic
Influenza A Positive	5	26%	2	10%	0	0%	0	0%	0	0%	
Influenza B Positive	3	16%	4	20%	8	35%	2	20%	6	33%	
Adenovirus Positive	2	11%	2	10%	4	17%	1	10%	1	6%	
Human Metapneumovirus Positive	0	0%	1	5%	0	0%	0	0%	0	0%	
Parainfluenza 1 Positive	0	0%	0	0%	0	0%	0	0%	0	0%	
Parainfluenza 2 Positive	0	0%	0	0%	0	0%	0	0%	0	0%	
Parainfluenza 3 Positive	0	0%	0	0%	0	0%	1	10%	1	6%	
RSV Positive	1	5%	0	0%	1	4%	1	10%	0	0%	
Co-infections	0	0%	1	5%	0	0%	0	0%	0	0%	
Specimens Tested	19	-	20	-	23	-	10	-	18	-	Moderate Volume

Table 2 - Influenza A Typing, Current Week and Previous Four Weeks

Influenza A Typing (% of influenza A)	Week Ending										5-Week Totals	
	4/28		5/5		5/12		5/19		5/26		n	%
	n	%	n	%	n	%	n	%	n	%		
Influenza A 2009 H1N1	0	0%	1	50%	0	-	0	-	0	-	1	14%
Influenza A H1	0	0%	0	0%	0	-	0	-	0	-	0	0%
Influenza A H3	5	100%	1	50%	0	-	0	-	0	-	6	86%

Figure 1 - Weekly Number of Specimens Tested

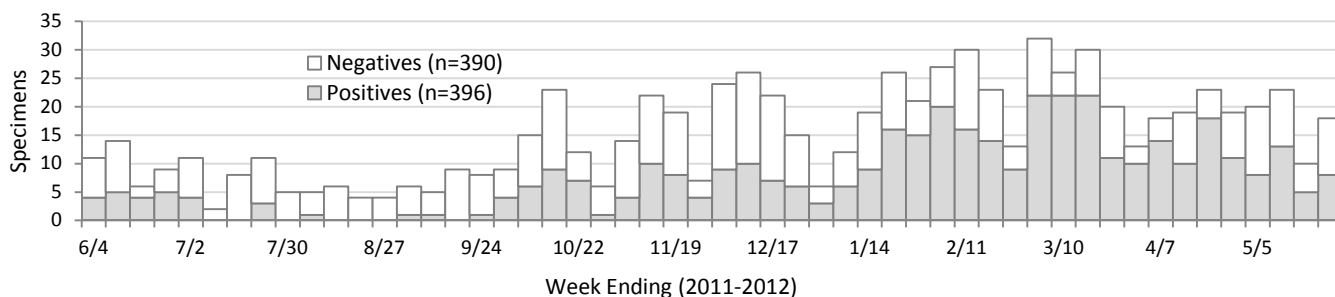
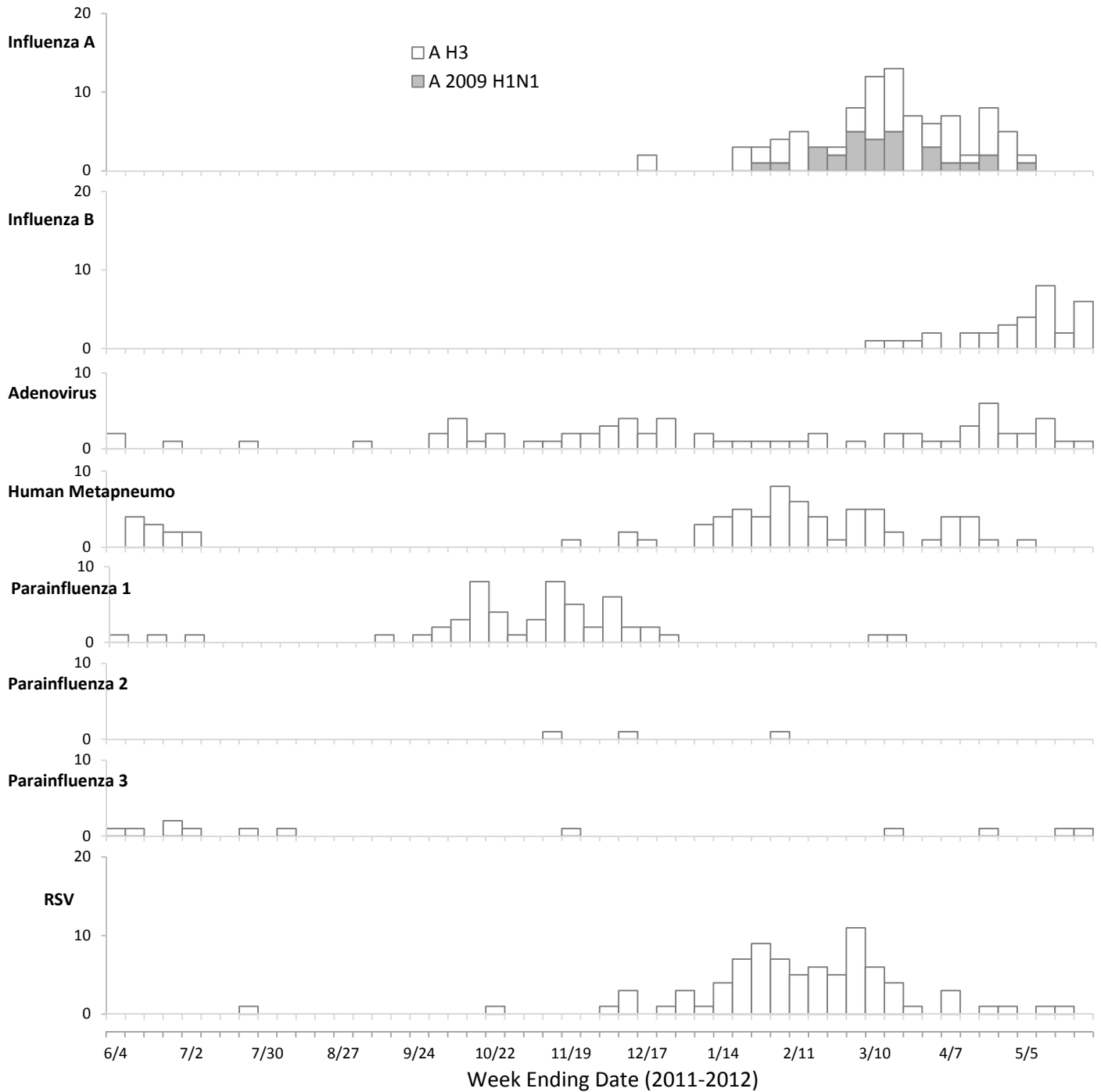


Figure 2. Weekly Positive Counts for Organisms Tested



Other News and Information

Influenza B is currently circulating at high levels in southern Nevada (Tables 1 & 2).

Nationwide, the timing of influenza activity can vary by U.S. regions, with substantial influenza activity in many regions persisting as late as May (Fig. 2, Influenza B).