

Southern Nevada Weekly Influenza Surveillance Snapshot MMWR Week of May 14, 2017 to May 20, 2017

Summary: Influenza surveillance in Southern Nevada for the 2016/2017 season recorded an expected increase in cases up to a peak during week 2 and 3 of 2017. A subsequent gradual decrease was then noted through week 5 followed a sharp increase in week 6 then a significant decrease for the past 14 weeks. The total number of confirmed cases was 654 as of May 20, 2017. Compared to the previous season, there was a 2.8% increase in cases. Influenza A is the dominant type circulating locally (78.7%). Influenza B accounted for approximately 21.1%. No influenza-associated pediatric death occurred this season. SNHD has continued to update the public on the progression of the season and has encouraged the population to get vaccinated.

Table 1: Influenza Report by Age Group, Clark County, NV (MMWR Week 40, 2016 to Week 20, 2017)

Age Group	Deaths	*Hosp.	Cases
0-4	0	44	109
05-24	0	44	133
25-49	1	71	95
50-64	1	88	107
65+	7	191	210
Total	9	438	654

*Hosp.= Hospitalizations

Figure 1: Weekly Variation of Influenza Cases by Test Type (*RIDTs:Rapid Influenza Diagnosis Test **Confirmed by: PCR, Culture, Immunofluorescent DFA staining)

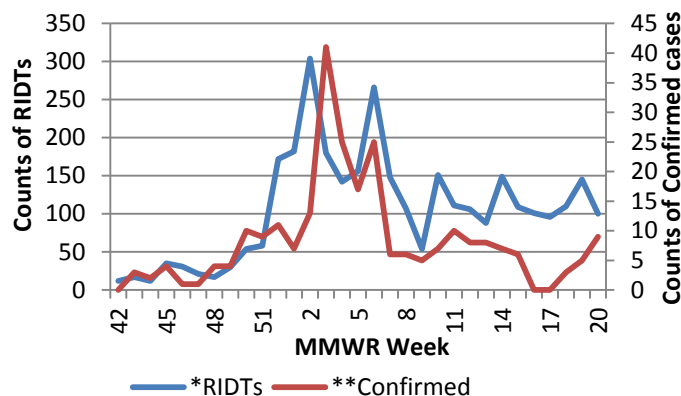


Figure 2: Distribution of Cases by Virus Strain

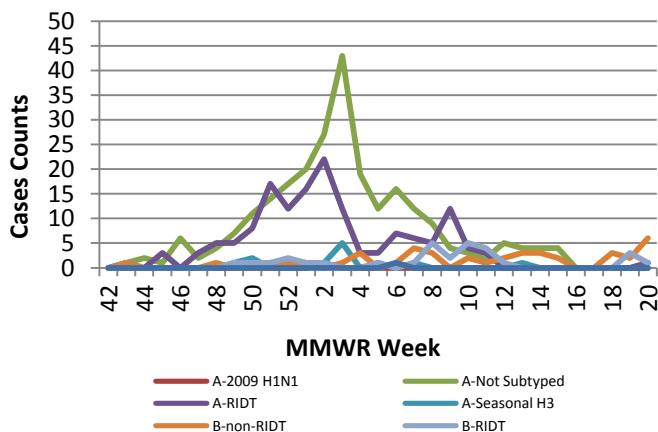


Table 2: Influenza Report by virus strain (MMWR week 40, 2016 to Week 20, 2017)

Influenza Type	Deaths	Hospitalizations	Cases
Influenza A (2009 H1N1)	0	3	4
Influenza A (not sub-typed)	2	179	298
Influenza A (RIDT)	5	166	193
Influenza A (seasonal H3)	1	4	20
Influenza B (non-RIDT)	0	25	77
Influenza B (RIDT)	0	60	61
Influenza (unknown type, RIDT)	1	1	1
Total	9	438	654

Southern Nevada Weekly Influenza Surveillance Snapshot MMWR Week of May 14, 2017 to May 20, 2017

Figure 3: Weekly Influenza-Like Illness variation

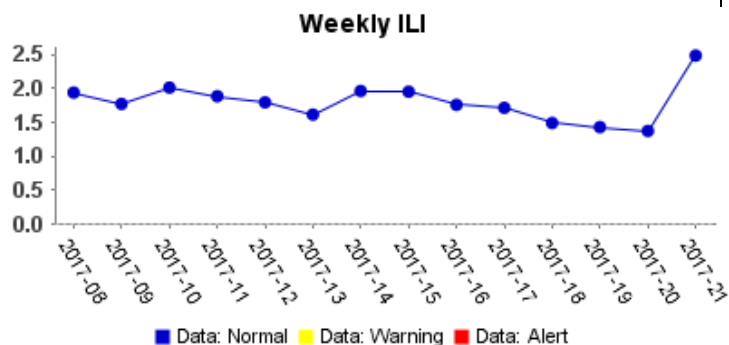


Figure 4: Seasonal Trends of Confirmed Cases of Influenza

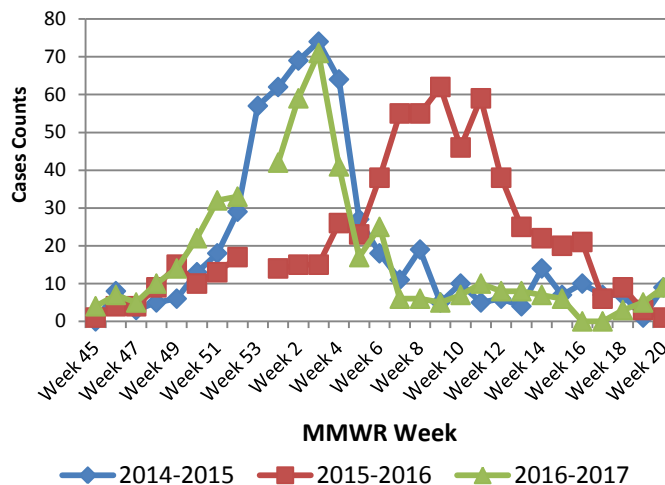


Table 3: Influenza Report by Condition Type, Clark County, NV (MMWR Week 40, 2016 to Week 20, 2017)

Condition	Deaths	*Hosp.	Cases
Influenza	9	438	654
Influenza A, Novel Virus	0	0	0
Influenza-associated death in person under 18	0	0	0
Total	9	438	654

*Hosp.=Hospitalizations

Figure 5: ILI Activity Level- 2016-17 Influenza Season Week 19 ending May 13, 2017

<https://gis.cdc.gov/grasp/fluview/main.html>

