

## Southern Nevada Weekly Influenza Surveillance Snapshot MMWR Week of April 2, 2017 to April 8, 2017

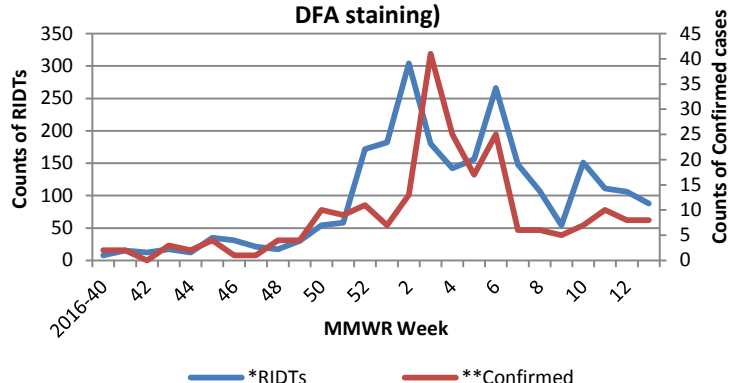
**Summary:** Influenza surveillance in Southern Nevada for the 2016/2017 season recorded an expected increase in cases up to a peak during week 2 and 3 of 2017. A subsequent gradual decrease was then noted through week 5 followed a sharp increase in week 6, and then a significant decrease afterwards. The total number of confirmed cases was 570 as of April 8, 2017. Compared to the previous season, there was a 1% decrease in overall cases. Influenza A is the dominant type circulating locally (80-87%). Influenza B accounted for approximately 14%. No influenza-associated pediatric death occurred this season. SNHD has continued to update the public on the progression of the season and has encouraged the population to get vaccinated.

**Table 1: Influenza Report by Age Group, Clark County, NV (MMWR Week 40, 2016 to Week 14, 2017)**

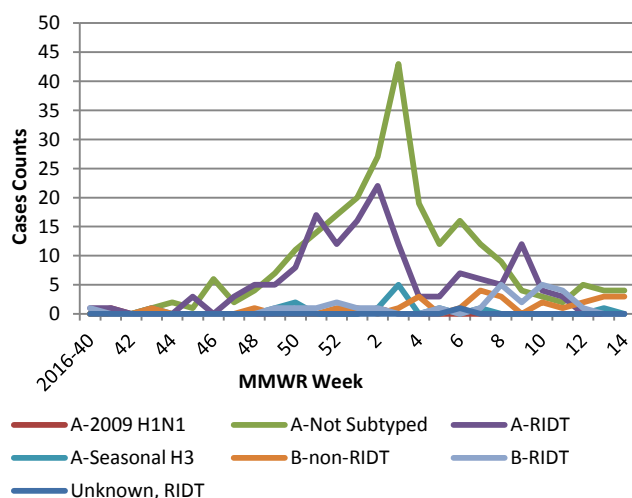
Age Group	Deaths	*Hosp.	Cases
0-4	0	36	92
05-24	0	37	111
25-49	1	61	82
50-64	1	79	95
65+	7	174	190
<b>Total</b>	<b>9</b>	<b>387</b>	<b>570</b>

\*Hosp.= Hospitalizations

**Figure 1: Weekly Variation of Influenza Cases by Test Type (\*RIDTs: Rapid Influenza Diagnosis Test \*\*Confirmed by: PCR, Culture, Immunofluorescent DFA staining)**



**Figure 2: Distribution of Cases by Virus Strain**

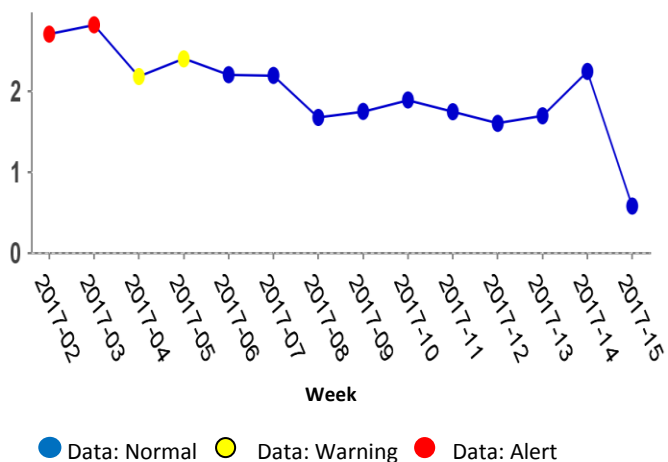


**Table 2: Influenza Report by virus strain (MMWR week 40, 2016 to Week 14, 2017)**

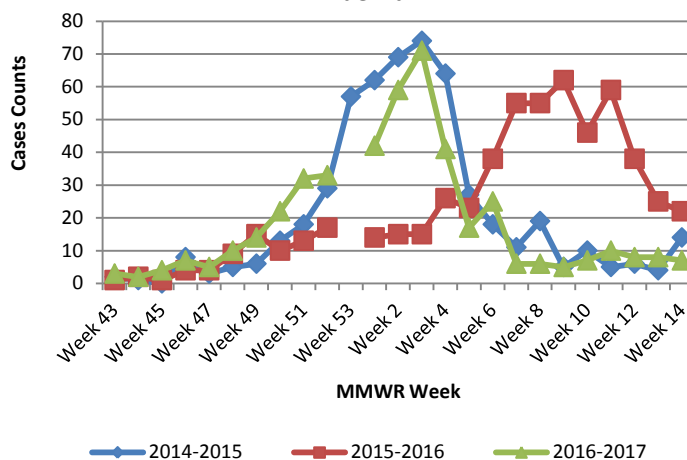
Influenza Type	Deaths	Hospitalizations	Cases
Influenza A (2009 H1N1)	0	3	4
Influenza A (not sub-typed)	2	172	285
Influenza A (RIDT)	5	158	185
Influenza A (seasonal H3)	1	4	20
Influenza B (non-RIDT)	0	13	38
Influenza B (RIDT)	0	36	37
Influenza (unknown type, RIDT)	1	1	1
<b>Total</b>	<b>9</b>	<b>387</b>	<b>570</b>

## Southern Nevada Weekly Influenza Surveillance Snapshot MMWR Week of April 2, 2017 to April 8, 2017

**Figure 3: Percentage of Visits for Influenza-Like Illness Weekly variation**



**Figure 4: Seasonal Trends of Confirmed Cases of Influenza**



**Table 3: Influenza Report by Condition Type, Clark County, NV (MMWR Week 40, 2016 to Week 14, 2017)**

Condition	Deaths	*Hosp.	Cases
Influenza	9	387	570
Influenza A, Novel Virus	0	0	0
Influenza-associated death in person under 18	0	0	0
<b>Total</b>	<b>9</b>	<b>387</b>	<b>570</b>

\*Hosp.=Hospitalizations

**Figure 5: ILI Activity Level- 2016-17 Influenza Season Week 13 ending A, 2017 (<https://gis.cdc.gov/grasp/fluview/main.html>)**

