

## Southern Nevada Weekly Influenza Surveillance Snapshot CDC Week 51, December 17 – December 23, 2017

**Summary:** Influenza surveillance for Clark County, Nevada includes data collected from local hospital emergency rooms, healthcare providers and laboratories. During week 51, the influenza activity increased sharply in the United States and Nevada was one of twenty-one states experienced high influenza-like illness (ILI) activity. In Clark County, as of 12/23/2017, the total number of confirmed cases of influenza during the season was 349 and the percentage of emergency room (ER) visits for Influenza-like Illness (ILI) increased from 4.1% in week 50 to 4.7% in week 51. Approximately 53% of area ER visits for ILI were children under 18 years of age. Influenza A was the dominant type circulating. Seven influenza-associated deaths occurred this season in Clark County. Southern Nevada Health District will continue to update the public on the progression of the season and encourage the population to get vaccinated.

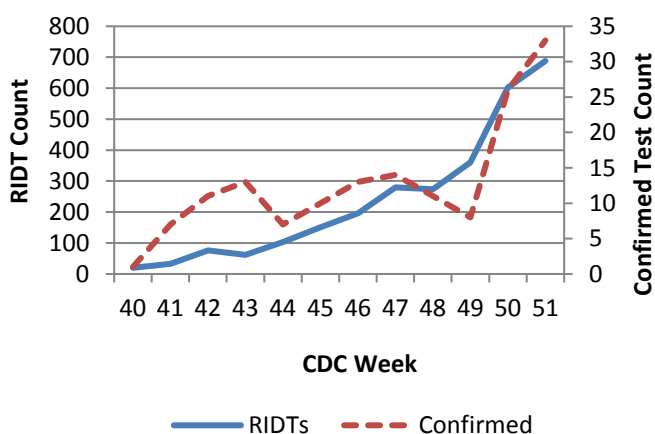
**Table 1: Influenza Report by Age Group, Clark County, NV (CDC Week 40, 2017 to Week 51, 2017)**

Age Group	Deaths	Hospitalizations	Confirmed Cases*
0-4	1	8	9
5-17	1	8	16
18-24	0	11	14
25-49	1	39	59
50-64	1	61	78
65+	3	152	173
<b>Total</b>	<b>7</b>	<b>279</b>	<b>349</b>

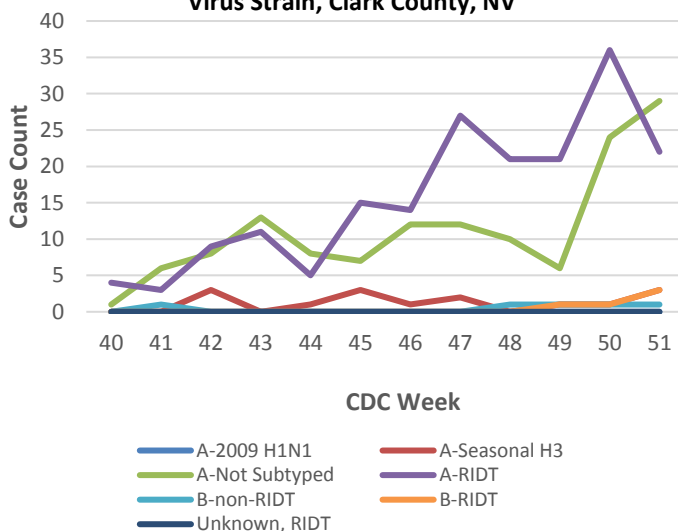
**Table 2: Influenza Report by Virus Strain, Clark County, NV (CDC week 40, 2017 to Week 51, 2017)**

Influenza Type	Deaths	Hospitalizations	Confirmed Cases*
Influenza A (2009 H1N1)	0	0	0
Influenza A (seasonal H3)	3	9	15
Influenza A (not sub-typed)	1	76	136
Influenza A (RIDT)	3	188	188
Influenza B (non-RIDT)	0	1	5
Influenza B (RIDT)	0	5	5
Influenza (unknown type, RIDT)	0	0	0
<b>Total</b>	<b>7</b>	<b>279</b>	<b>349</b>

**Figure 1: Weekly Count of Reported Positive Influenza Tests by Test Type\*\*, Clark County, NV**

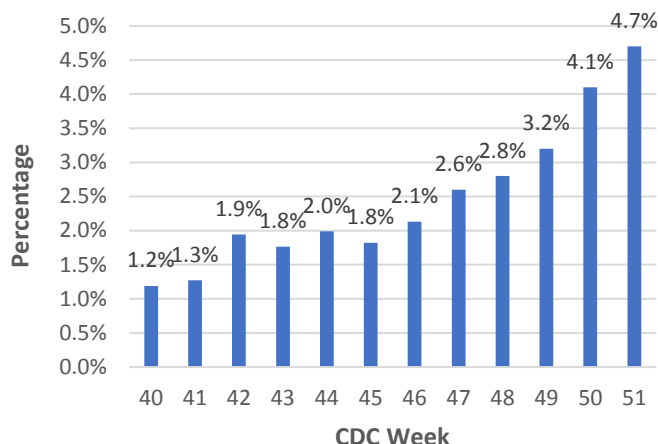


**Figure 2: Distribution of Confirmed Cases\* by Virus Strain, Clark County, NV**

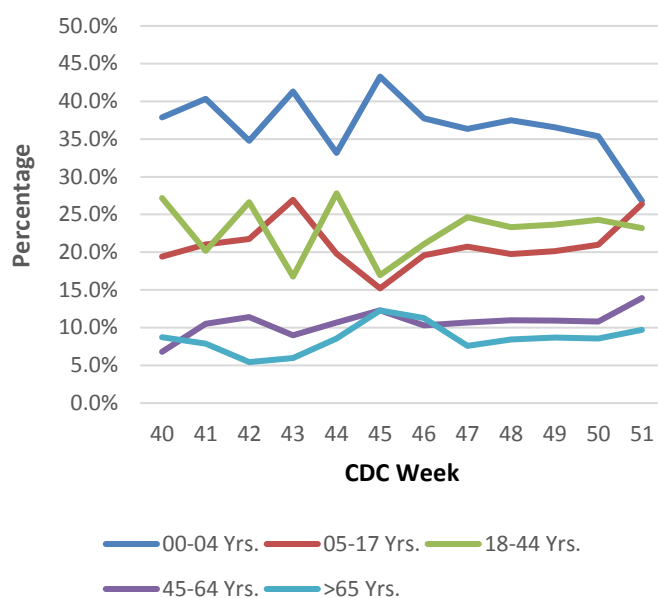


## Southern Nevada Weekly Influenza Surveillance Snapshot CDC Week 51, December 17 – December 23, 2017

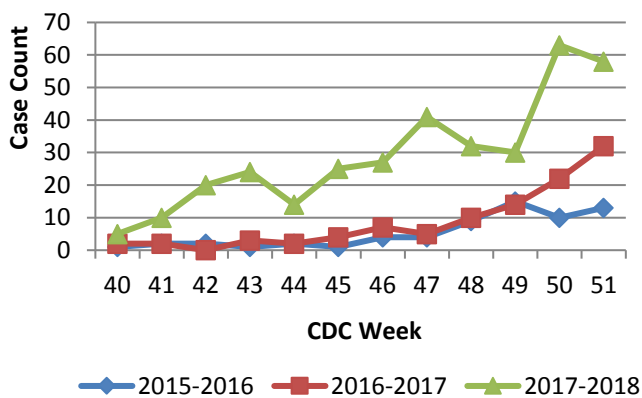
**Figure 3: Weekly Percentage of Emergency Room Visits for Influenza-Like Illness, Clark County, NV**



**Figure 4: Age Distribution of Emergency Room Visits for Influenza-Like Illness, Clark County, NV**



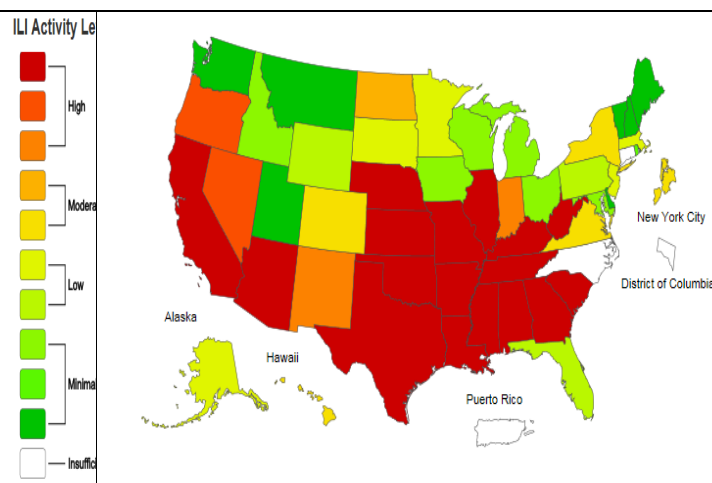
**Figure 5: Seasonal Trends of Confirmed Cases\* of Influenza, Clark County, NV**



Total Confirmed Cases\*(Week 40 – 51):  
349 (2017-2018), 113 (2016-2017), 64 (2015-2016)

**Figure 6: National ILI Activity Level- 2017-18 Influenza Season  
CDC Week 51 ending December 23, 2017**

(<https://gis.cdc.gov/grasp/fluview/main.html>)



\*Confirmed Cases= Laboratory confirmed by PCR, culture, immunofluorescent DFA antigen staining, IHC staining, rapid influenza diagnostic tests (RIDTs) with hospitalizations for 24 hours or longer, or RIDTs with death.

\*\*Test Type-RIDT: Rapid Influenza Diagnostic Test

Test Type- Confirmed: PCR, Culture, Immunofluorescent DFA Staining

For additional information regarding SNHD influenza surveillance, please visit us at

<http://southernnevadahealthdistrict.org/stats-reports/influenza-surveillance.php>.