

Southern Nevada Weekly Influenza Surveillance Snapshot CDC Week 49, December 3 – December 9, 2017

Summary: Influenza surveillance for Clark County, Nevada includes data collected from local hospital emergency rooms, healthcare providers and laboratories. While seasonal influenza (flu) viruses can be detected year-round, flu viruses are most common during the fall and winter. The first official date of the 2017-2018 influenza season was October 1, 2017. Nationally, the overall influenza activity has increased. Locally, as of December 9, 2017, the total number of confirmed cases of influenza during the season was 175 and the percentage of emergency room (ER) visits for Influenza-like Illness (ILI) increased from 2.8% in week 48 to 3.2% in week 49. Approximately 37% of area ER visits for ILI were children of 0-4 years of age. Influenza A was the dominant type circulating. Three influenza-associated deaths occurred this season in Clark County. Southern Nevada Health District will continue to update the public on the progression of the season and encourage the population to get vaccinated.

Table 1: Influenza Report by Age Group, Clark County, NV (CDC Week 40, 2017 to Week 49, 2017)

| Age Group | Deaths | Hospitalizations | Confirmed Cases* |
|--------------|----------|------------------|------------------|
| 0-4 | 1 | 5 | 5 |
| 5-17 | 1 | 3 | 10 |
| 18-24 | 0 | 5 | 7 |
| 25-49 | 0 | 22 | 27 |
| 50-64 | 0 | 29 | 34 |
| 65+ | 1 | 84 | 92 |
| Total | 3 | 148 | 175 |

Table 2: Influenza Report by Virus Strain, Clark County, NV (CDC week 40, 2017 to Week 49, 2017)

| Influenza Type | Deaths | Hospitalizations | Confirmed Cases* |
|--------------------------------|----------|------------------|------------------|
| Influenza A (2009 H1N1) | 0 | 0 | 0 |
| Influenza A (not sub-typed) | 1 | 52 | 74 |
| Influenza A (RIDT) | 1 | 91 | 91 |
| Influenza A (seasonal H3) | 1 | 4 | 8 |
| Influenza B (non-RIDT) | 0 | 1 | 2 |
| Influenza B (RIDT) | 0 | 0 | 0 |
| Influenza (unknown type, RIDT) | 0 | 0 | 0 |
| Total | 3 | 148 | 175 |

Figure 1: Weekly Count of Reported Positive Influenza Tests by Test Type, Clark County, NV**

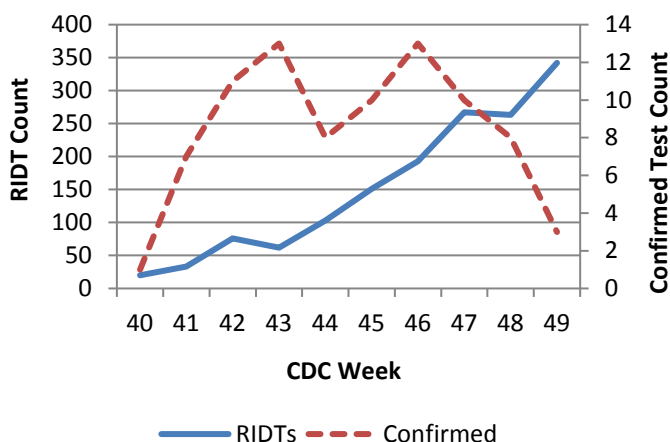
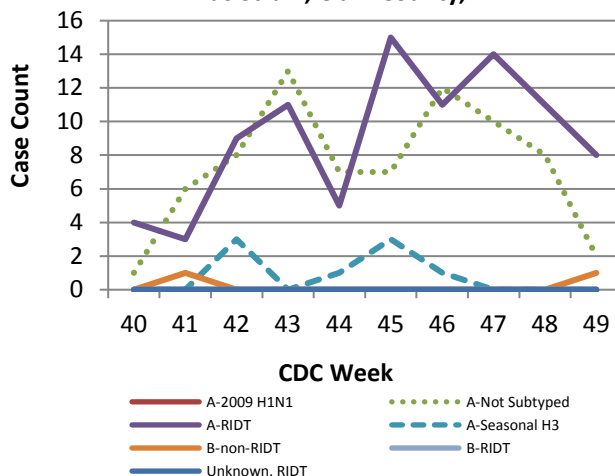


Figure 2: Distribution of Confirmed Cases* by Virus Strain, Clark County, NV



Southern Nevada Weekly Influenza Surveillance Snapshot CDC Week 49, December 3 – December 9, 2017

Figure 3: Weekly Percentage of Emergency Room Visits for Influenza-Like Illness, Clark County, NV

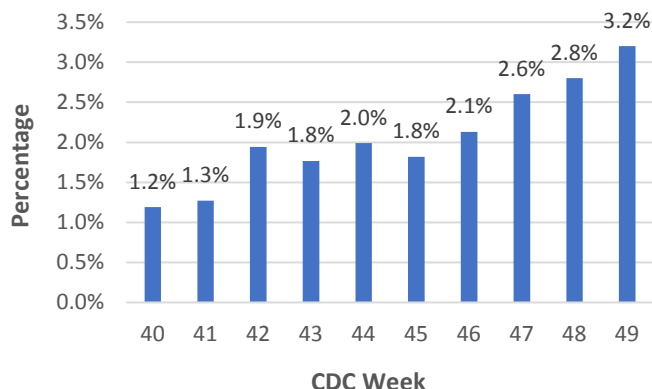


Figure 4: Age Distribution of Emergency Room Visits for Influenza-Like Illness, Clark County, NV

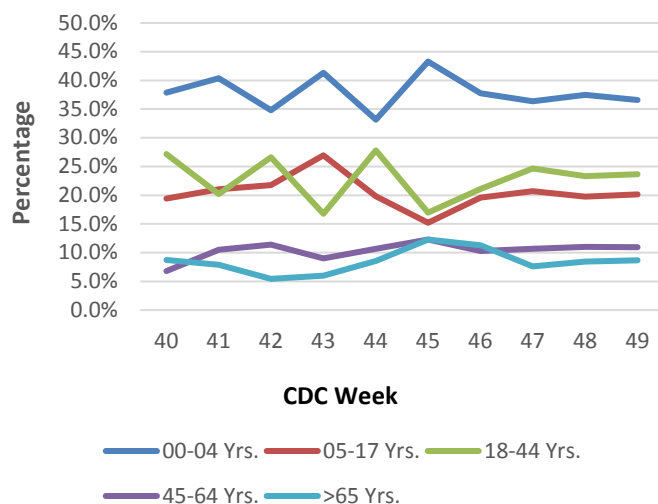
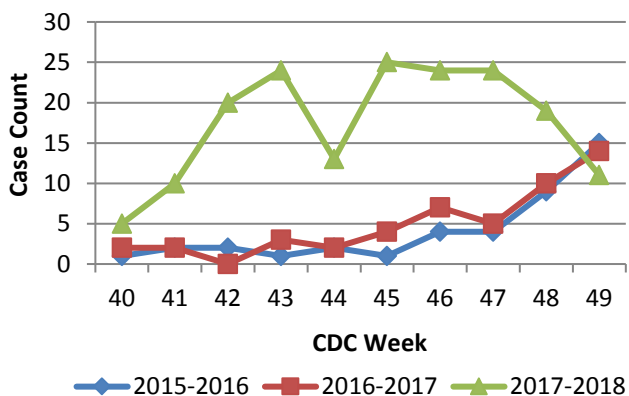
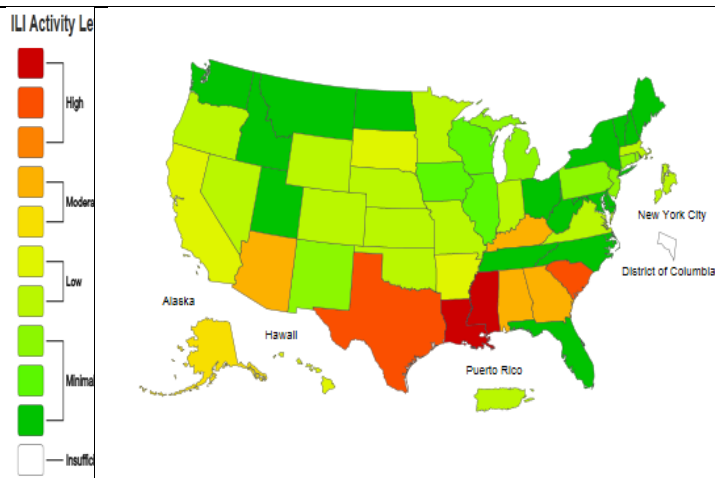


Figure 5: Seasonal Trends of Confirmed Cases* of Influenza, Clark County, NV



Total Confirmed Cases*(Week 40 – 49):
175 (2017-2018), 50 (2016-2017), 41 (2015-2016)

**Figure 6: National ILI Activity Level- 2017-18 Influenza Season
CDC Week 49 ending December 09, 2017**
<https://gis.cdc.gov/grasp/fluview/main.html>



*Confirmed Cases= Laboratory confirmed by PCR, culture, immunofluorescent DFA antigen staining, IHC staining, rapid influenza diagnostic tests (RIDTs) with hospitalizations for 24 hours or longer, or RIDTs with death.

**Test Type-RIDT: Rapid Influenza Diagnostic Test

Test Type- Confirmed: PCR, Culture, Immunofluorescent DFA Staining

For additional information regarding SNHD influenza surveillance, please visit us at

<http://southernnevadahealthdistrict.org/stats-reports/influenza-surveillance.php>.