

### Morbidity and Mortality Weekly Report (MMWR) Week of Oct 29, 2017 to Nov 4, 2017 (Week 44)

**Summary:** Influenza surveillance for Clark County, Nevada includes data collected from local hospital emergency rooms, healthcare providers and laboratories. While seasonal influenza (flu) viruses can be detected year-round, flu viruses are most common during the fall and winter. Most of the time, flu activity peaks between December and February. In Clark County, as of November 4, 2017, the total number of confirmed cases of influenza during the 2017-2018 season was 31. The percentage of emergency room (ER) visits for Influenza-like Illness (ILI) in Week 44 remained at the warning level. Approximately 50% of ER visits for ILI were children of 0-4 years of age. Influenza A was the dominant type circulating locally. No influenza-associated pediatric death occurred this season. Southern Nevada Health District will continue to update the public on the progression of the season and encourage the population to get vaccinated.

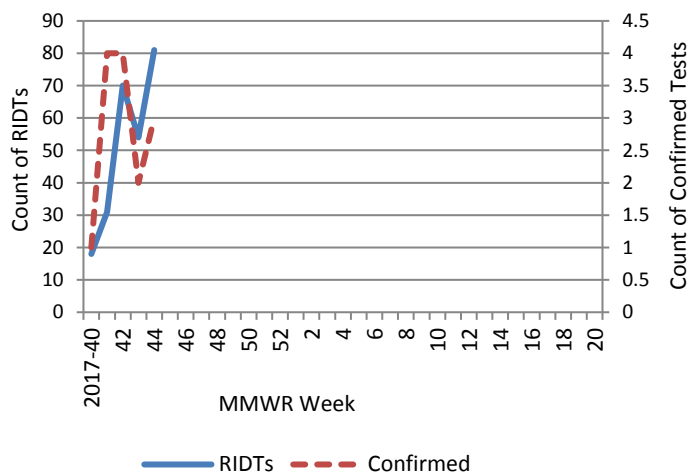
**Table 1: Influenza Report by Age Group, Clark County, NV (MMWR Week 40, 2017 to Week 44, 2017)**

Age Group	Deaths	Hospitalizations	*Confirmed Cases
0-4	0	0	0
05-24	0	1	3
25-49	0	4	7
50-64	0	1	3
65+	0	15	18
<b>Total</b>	<b>0</b>	<b>21</b>	<b>31</b>

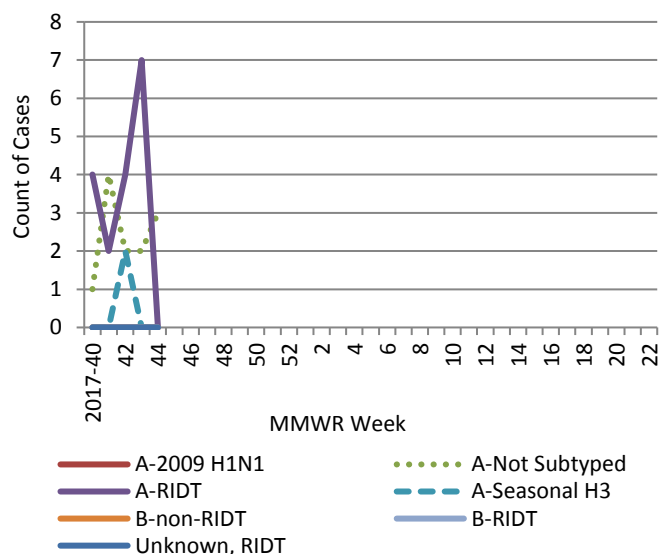
**Table 2: Influenza Report by Virus Strain, Clark County, NV (MMWR week 40, 2017 to Week 44, 2017)**

Influenza Type	Deaths	Hospitalizations	*Confirmed Cases
Influenza A (2009 H1N1)	0	0	0
Influenza A (not sub-typed)	0	4	12
Influenza A (RIDT)	0	17	17
Influenza A (seasonal H3)	0	0	2
Influenza B (non-RIDT)	0	0	0
Influenza B (RIDT)	0	0	0
Influenza (unknown type, RIDT)	0	0	0
<b>Total</b>	<b>0</b>	<b>21</b>	<b>31</b>

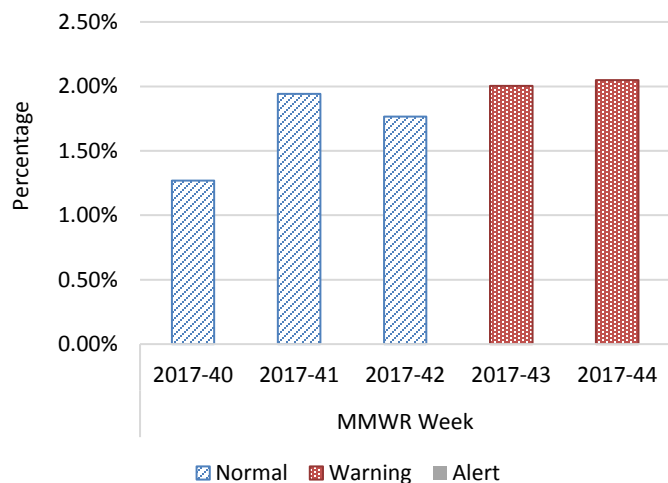
**Figure 1: Weekly Counts of Reported Positive Influenza Tests by Test Type (RIDTs:Rapid Influenza Diagnosis Test. Confirmed: PCR, Culture, Immunofluorescent DFA staining), Clark County, NV**



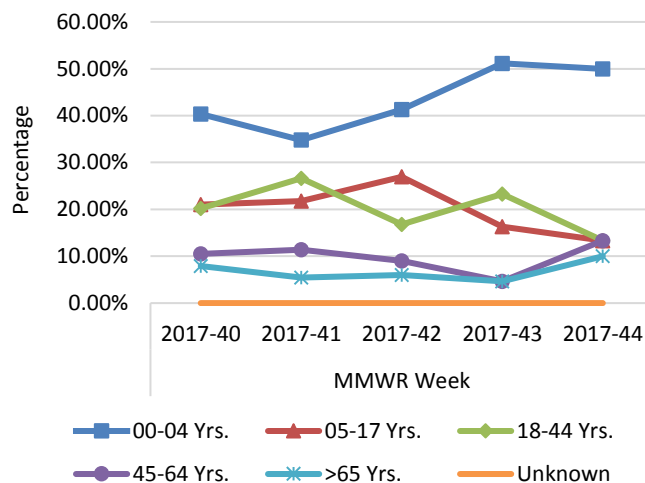
**Figure 2: Weekly Distribution of Confirmed Cases by Virus Strain, Clark County, NV**



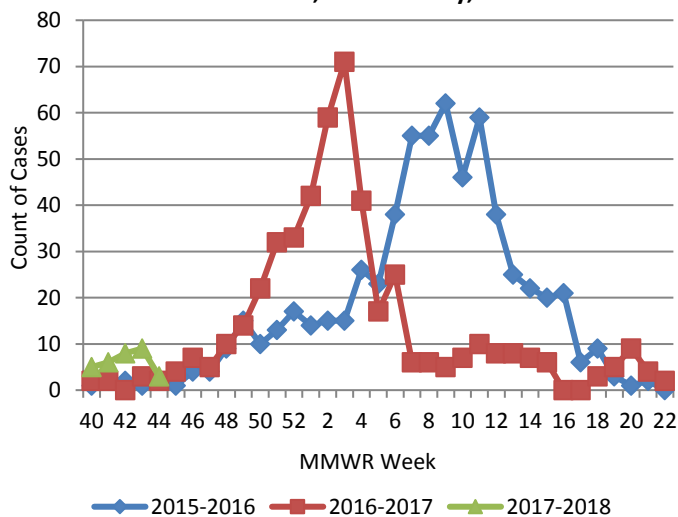
**Figure 3: Weekly Percentage of Emergency Room Visits for Influenza-Like Illness, Clark County, NV**



**Figure 4: Age Distribution of Emergency Room Visits for Influenza-Like Illness, Clark County, NV**

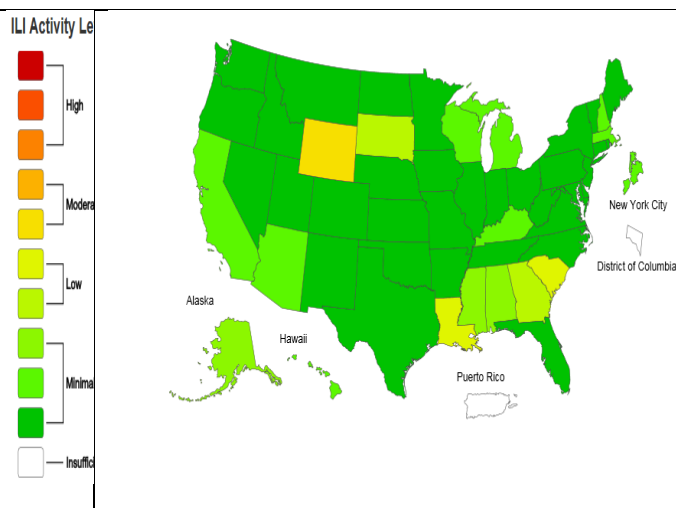


**Figure 5: Seasonal Trends of Confirmed Cases of Influenza, Clark County, NV**



**Figure 6: National ILI Activity Level- 2017-18 Influenza Season Week 43 ending October 28, 2017**

(<https://gis.cdc.gov/grasp/fluview/main.html>)



\*Confirmed Cases= Laboratory confirmed by PCR, culture, immunofluorescent DFA antigen staining, IHC staining, rapid influenza diagnostic tests (RIDTs) with hospitalizations for 24 hours or longer, or RIDTs with death.

For additional information regarding SNHD influenza surveillance, please visit us at

<http://southernnevadahealthdistrict.org/stats-reports/influenza-surveillance.php>.