



Southern Nevada Weekly Influenza Surveillance Snapshot CDC Week 20, May 13, 2018 to May 19, 2018

Summary:

Influenza surveillance for Clark County, Nevada includes data collected from 14 local hospital emergency rooms and 71 healthcare providers. During week 20, the influenza activity continued to decrease in the United States and remained at the minimal level in the state of Nevada. In Clark County, as of 5/19/2018, the total number of confirmed cases of influenza during the season was 1345 with 50% being age 65 and older, and the proportion of emergency room (ER) visits for Influenza-like Illness (ILI) decreased from 2.0% in week 19 to 1.8% in week 20. Approximately 53% of area ER visits for ILI were children under 18 years of age. Influenza B was the dominant type circulating in week 20. Sixty influenza-associated deaths, including 3 deaths of children under age 18, occurred this season in Clark County. Southern Nevada Health District will continue to update the public on the progression of the season and encourage influenza vaccination for all persons 6 months of age and older.

Table 1: Influenza Report by Age Group, Clark County, NV (CDC Week 40, 2017 to Week 20, 2018)

Age Group	Deaths	Hospitalized	Confirmed Cases*
0-4	1	48	83
05-17	2	30	109
18-24	1	29	37
25-49	2	117	194
50-64	14	182	255
65+	40	569	667
Total Confirmed Cases	60	975	1345

Figure 1: Weekly Count of Reported Positive Influenza Tests by Test Type, Clark County, NV**

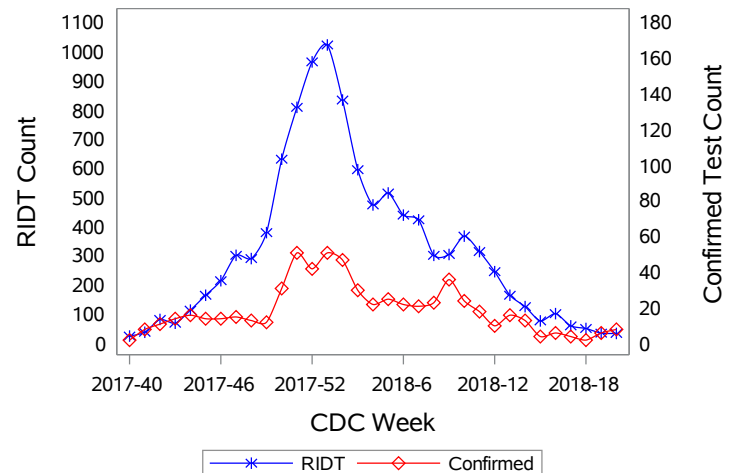


Table 2: Influenza Report by Virus Strain, Clark County, NV (CDC Week 40, 2017 to Week 20, 2018)

Influenza Type	Deaths	Hospitalized	Confirmed Cases*
A (2009 H1N1)	1	4	7
A (RIDT)	34	624	624
A (not sub-typed)	9	163	378
A (not sub-typed)	0	0	4
A (seasonal H3)	3	23	37
B (RIDT)	9	118	119
B (non-RIDT)	4	43	176
Total Confirmed Cases	60	975	1345

Figure 2: Distribution of Confirmed Cases* by Virus Strain, Clark County, NV

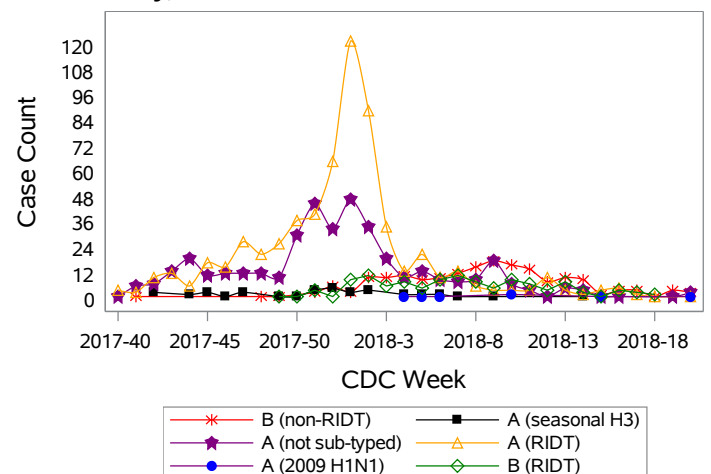


Figure 3: Weekly Percentage of Emergency Room Visits for Influenza-Like Illness, Clark County, NV

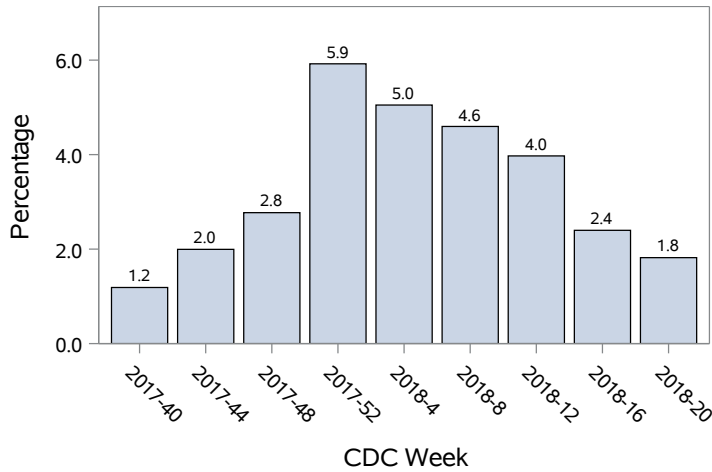


Figure 4: Age Distribution of Emergency Room Visits for Influenza-Like Illness, Clark County, NV

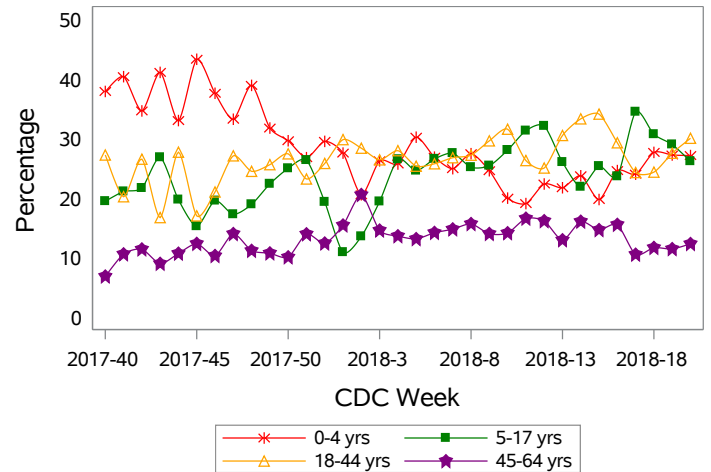


Figure 5: Seasonal Trends of Confirmed Cases of Influenza, Clark County, NV

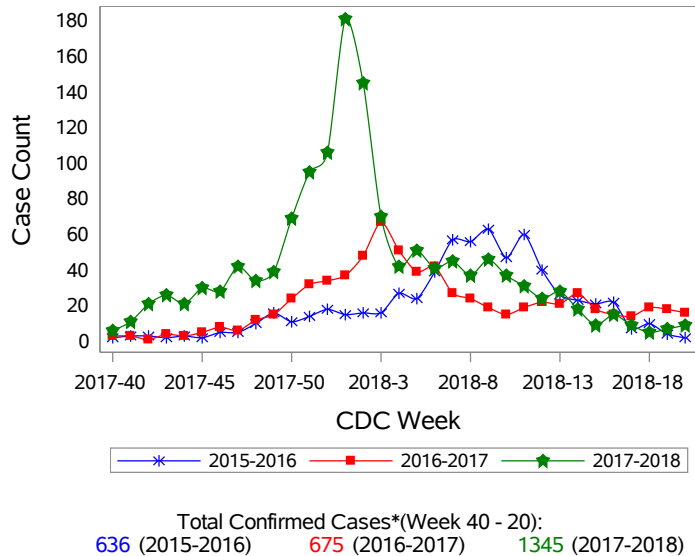
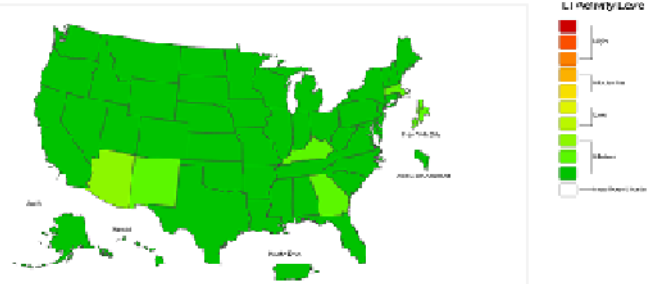


Figure 6: National ILI Activity Level- 2017-2018 Influenza Season CDC Week 20 ending May 19, 2018



*Confirmed Cases= Laboratory confirmed by PCR, culture, immunofluorescent DFA antigen staining, IHC staining, rapid influenza diagnostic tests (RIDTs) with hospitalizations for 24 hours or longer, or RIDTs with death.

**Test Type-RIDT: Rapid Influenza Diagnostic Test.

Test Type- Confirmed: PCR; Culture; Immunofluorescence, Direct (DFA) or Indirect (IFA) Florescent Antibody Staining; and Immunohistochemical (IHC)staining.

Note: The total number of confirmed cases presented in this report is subject to changes due to possible delays in reporting and processing.

For additional information regarding SNHD influenza surveillance, please visit us at

<http://southernnevadahealthdistrict.org/stats-reports/influenza-surveillance.php>.

Office of Epidemiology and Disease Surveillance (OEDS)
 Zuwen Qiu-Shultz, MPH, Epidemiologist