



## Southern Nevada Weekly Influenza Surveillance Snapshot CDC Week 8, Feb 18, 2018 to Feb 24, 2018

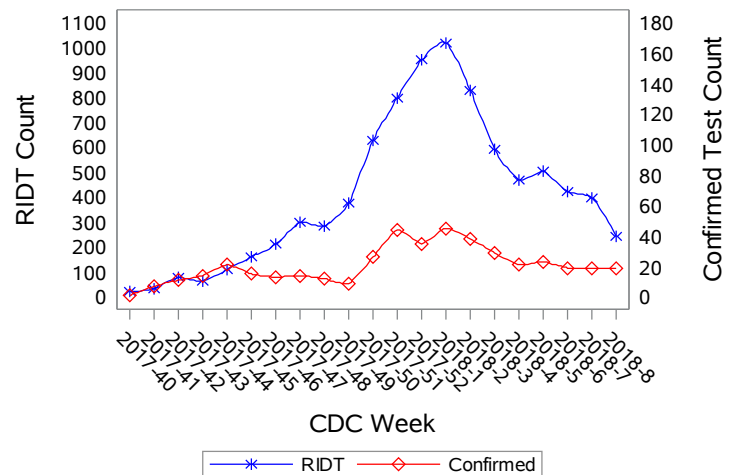
### Summary:

Influenza surveillance for Clark County, Nevada includes data collected from 15 local hospital emergency rooms and 67 healthcare providers. During week 8, the influenza activity decreased in the United States and the state of Nevada. In Clark County, as of 2/24/2018, the total number of confirmed cases of influenza during the season was 1084, the proportion of emergency room (ER) visits for Influenza-like Illness (ILI) decreased from 5.2% in week 7 to 4.6% in week 8. Approximately 53% of area ER visits for ILI were children under 18 years of age. Influenza B was the dominant type circulating in Week 8. Twenty-five influenza-associated deaths including 3 deaths of children under age 18 occurred this season in Clark County. Southern Nevada Health District will continue to update the public on the progression of the season and encourage influenza vaccination for all persons 6 months of age and older.

**Table 1: Influenza Report by Age Group, Clark County, NV (CDC Week 40, 2017 to Week 8, 2018)**

Age Group	Deaths	Hospitalized	Confirmed Cases*
0-4	1	38	56
05-17	2	26	71
18-24	1	24	30
25-49	1	96	151
50-64	6	151	211
65+	14	479	565
Total	25	814	1084

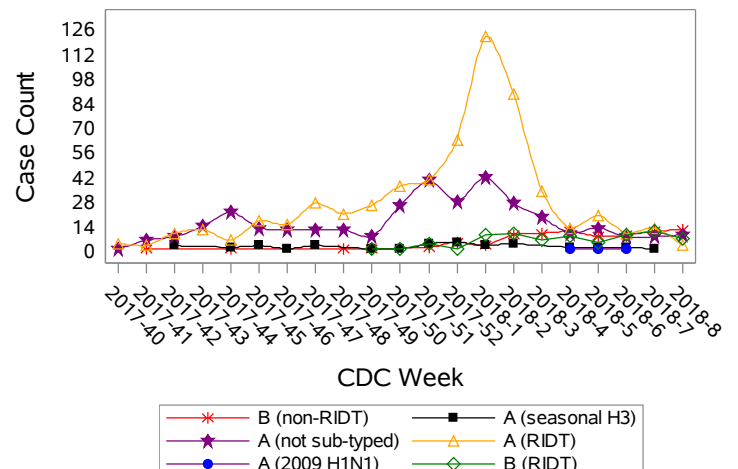
**Figure 1: Weekly Count of Reported Positive Influenza Tests by Test Type\*\*, Clark County, NV**



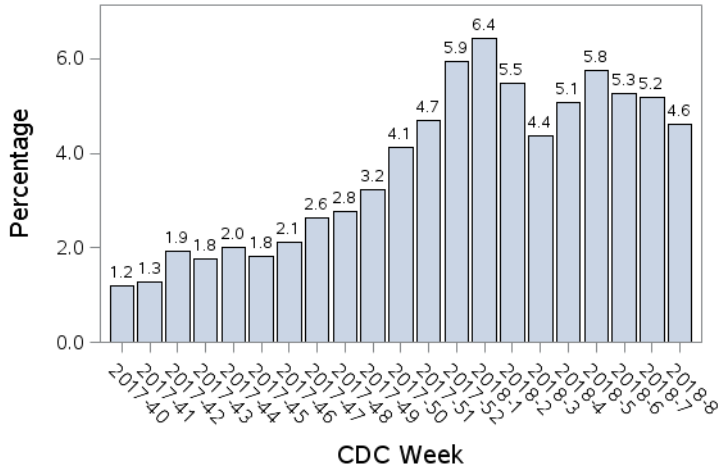
**Table 2: Influenza Report by Virus Strain, Clark County, NV (CDC Week 40, 2017 to Week 8, 2018)**

Influenza Type	Deaths	Hospitalized	Confirmed Cases*
A (2009 H1N1)	0	2	3
A (RIDT)	14	578	578
A (not sub-typed)	2	126	318
A (seasonal H3)	4	21	35
B (RIDT)	1	71	71
B (non-RIDT)	4	16	79
Total Confirmed Cases	25	814	1084

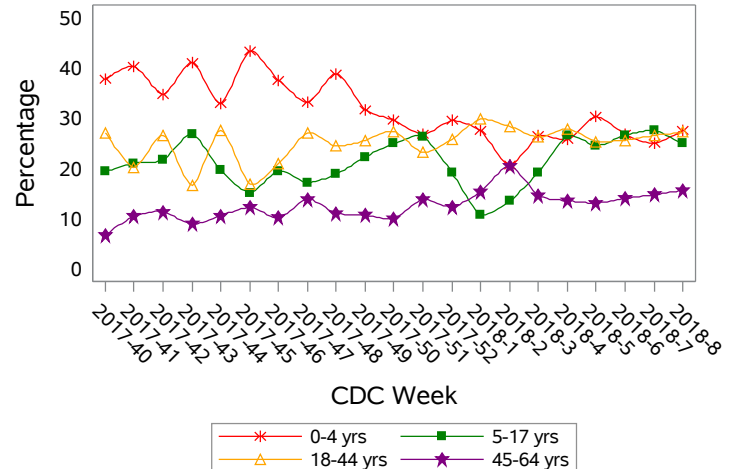
**Figure 2: Distribution of Confirmed Cases\* by Virus Strain, Clark County, NV**



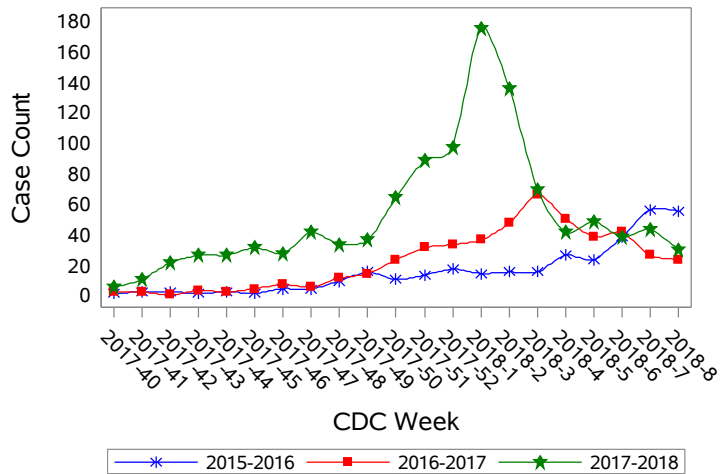
**Figure 3: Weekly Percentage of Emergency Room Visits for Influenza-Like Illness, Clark County, NV**



**Figure 4: Age Distribution of Emergency Room Visits for Influenza-Like Illness, Clark County, NV**

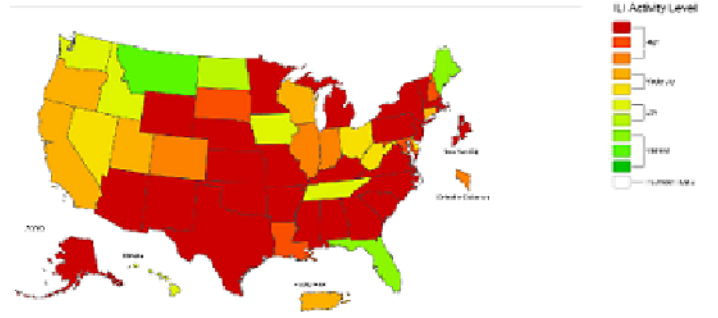


**Figure 5: Seasonal Trends of Confirmed Cases of Influenza, Clark County, NV**



Total Confirmed Cases\*(Week 40 - 8):  
 323 (2015-2016)    464 (2016-2017)    1084 (2017-2018)

**Figure 6: National ILI Activity Level- 2017-2018 Influenza Season CDC Week 8 ending Feb 24, 2018**



\*Confirmed Cases= Laboratory confirmed by PCR, culture, immunofluorescent DFA antigen staining, IHC staining, rapid influenza diagnostic tests (RIDTs) with hospitalizations for 24 hours or longer, or RIDTs with death.

\*\*Test Type-RIDT: Rapid Influenza Diagnostic Test.

Test Type- Confirmed: PCR, Culture, Immunofluorescent DFA Staining.

Note: The total number of confirmed cases presented in this report is subject to changes due to possible delays in reporting and processing.

For additional information regarding SNHD influenza surveillance, please visit us at

<http://southernnevadahealthdistrict.org/stats-reports/influenza-surveillance.php>.

Office of Epidemiology and Disease Surveillance (OEDS)  
 Zuwen Qiu-Shultz, MPH, Epidemiologist