

Southern Nevada Weekly Influenza Surveillance Snapshot CDC Week 2, January 7, 2017 – January 13, 2018

Summary: Influenza surveillance for Clark County, Nevada includes data collected from 16 local hospital emergency rooms and 63 healthcare providers. During week 2, the influenza activity increased sharply in the United States and Nevada was one of thirty-two states experienced high influenza-like illness (ILI) activity. In Clark County, as of 1/13/2018, the total number of confirmed cases of influenza during the season was 687, however, the percentage of emergency room (ER) visits for Influenza-like Illness (ILI) decreased from 6.8% in week 1 to 5.5% in week 2. Approximately 49% of area ER visits for ILI were adults between 18 and 64 years of age. Influenza A was the dominant type circulating. Fourteen influenza-associated deaths including two deaths of children under age eighteen occurred this season in Clark County. Southern Nevada Health District will continue to update the public on the progression of the season and encourage the population to get vaccinated.

Table 1: Influenza Report by Age Group, Clark County, NV (CDC Week 40, 2017 to Week 2, 2018)

| Age Group | Deaths | Hospitalizations | Confirmed Cases* |
|--------------|-----------|------------------|------------------|
| 0-4 | 1 | 18 | 23 |
| 5-17 | 1 | 15 | 26 |
| 18-24 | 1 | 20 | 23 |
| 25-49 | 1 | 71 | 100 |
| 50-64 | 3 | 108 | 138 |
| 65+ | 7 | 335 | 377 |
| Total | 14 | 567 | 687 |

Table 2: Influenza Report by Virus Strain, Clark County, NV (CDC week 40, 2017 to Week 2, 2018)

| Influenza Type | Deaths | Hospitalizations | Confirmed Cases* |
|--------------------------------|-----------|------------------|------------------|
| Influenza A (2009 H1N1) | 0 | 0 | 0 |
| Influenza A (seasonal H3) | 3 | 14 | 22 |
| Influenza A (not sub-typed) | 1 | 93 | 195 |
| Influenza A (RIDT) | 9 | 437 | 437 |
| Influenza B (non-RIDT) | 0 | 1 | 11 |
| Influenza B (RIDT) | 1 | 21 | 21 |
| Influenza (unknown type, RIDT) | 0 | 1 | 1 |
| Total | 14 | 567 | 687 |

Figure 1: Weekly Count of Reported Positive Influenza Tests by Test Type, Clark County, NV**

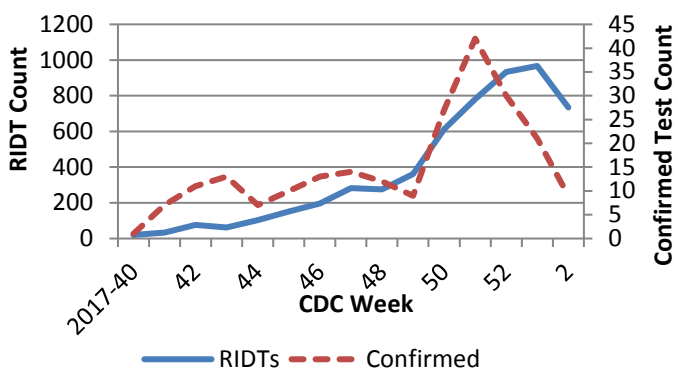
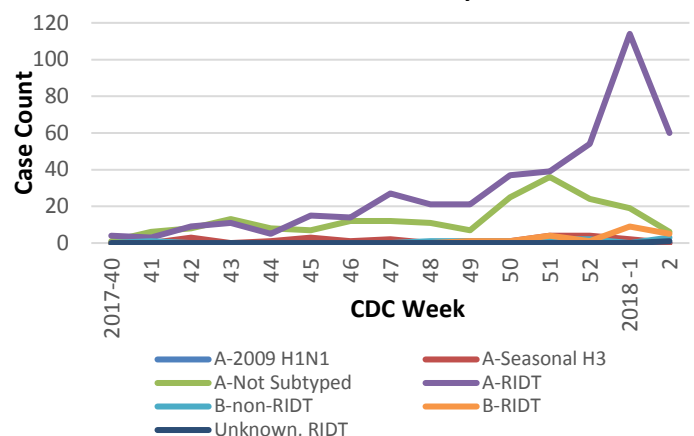


Figure 2: Distribution of Confirmed Cases* by Virus Strain, Clark County, NV



Southern Nevada Weekly Influenza Surveillance Snapshot CDC Week 2, January 7, 2017 – January 13, 2018

Figure 3: Weekly Percentage of Emergency Room Visits for Influenza-Like Illness, Clark County, NV

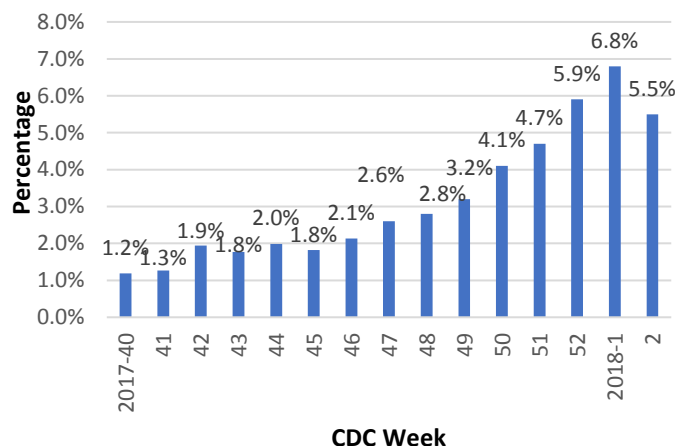


Figure 4: Age Distribution of Emergency Room Visits for Influenza-Like Illness, Clark County, NV

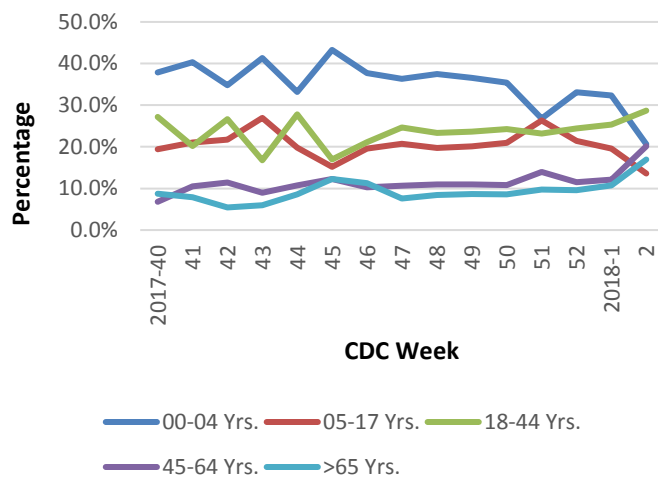
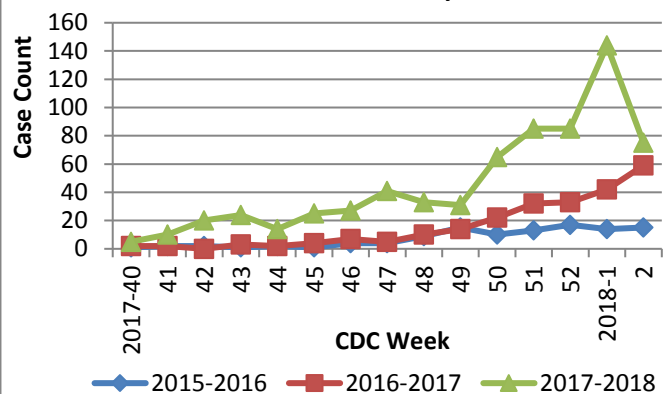


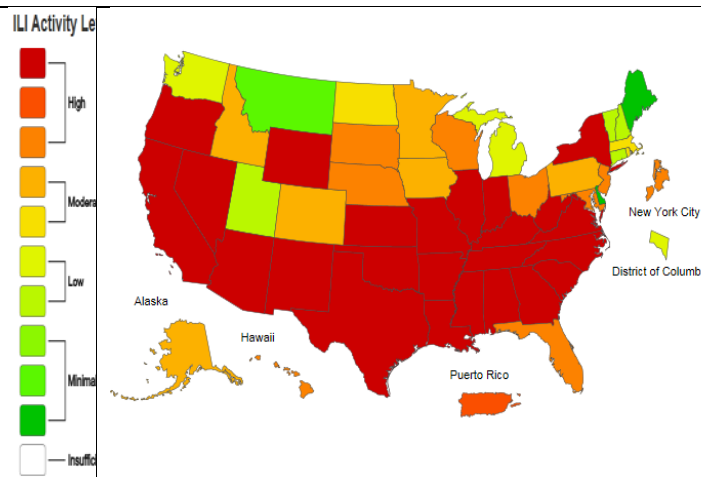
Figure 5: Seasonal Trends of Confirmed Cases* of Influenza, Clark County, NV



Total Confirmed Cases*(Week 40 – 2):
687 (2017-2018), 220 (2016-2017), 110 (2015-2016)

Figure 6: National ILI Activity Level- 2017-18 Influenza Season
 CDC Week 21 ending January 13, 2018

<https://gis.cdc.gov/grasp/fluview/main.html>



*Confirmed Cases= Laboratory confirmed by PCR, culture, immunofluorescent DFA antigen staining, IHC staining, rapid influenza diagnostic tests (RIDTs) with hospitalizations for 24 hours or longer, or RIDTs with death.

**Test Type-RIDT: Rapid Influenza Diagnostic Test

Test Type- Confirmed: PCR, Culture, Immunofluorescent DFA Staining

Note: The total number of confirmed cases presented in this report is subject to change due to possible delay in reporting and processing.

For additional information regarding SNHD influenza surveillance, please visit us at

<http://southernnevadahealthdistrict.org/stats-reports/influenza-surveillance.php>.