

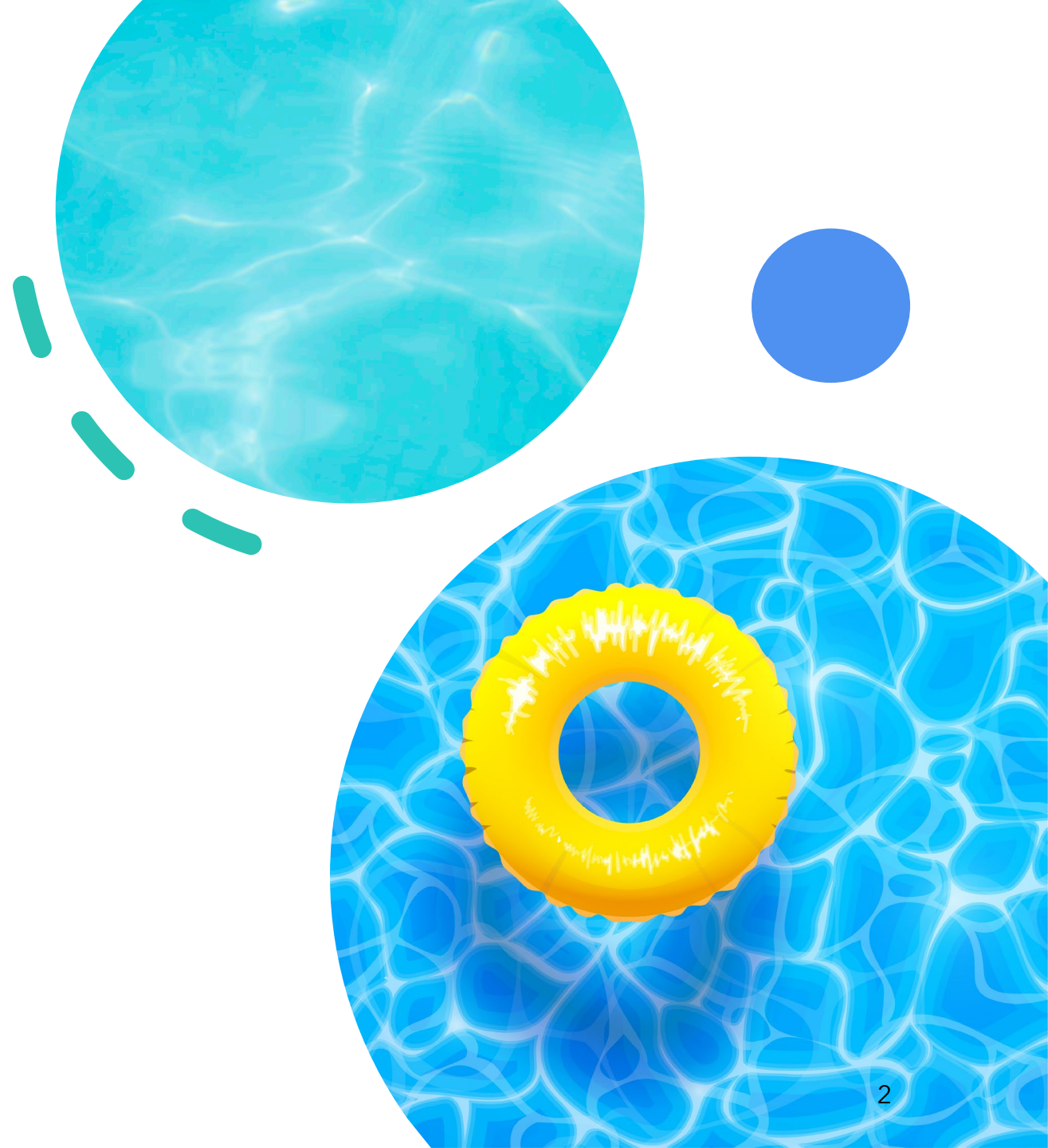
# SNHD Aquatic Health Plan Review Industry Outreach Meeting Non-Substantial Alterations

December 6, 2022

Jeremy Harper, Environmental Health Supervisor  
Aquatic Health Plan Review

# Non-Substantial Alterations

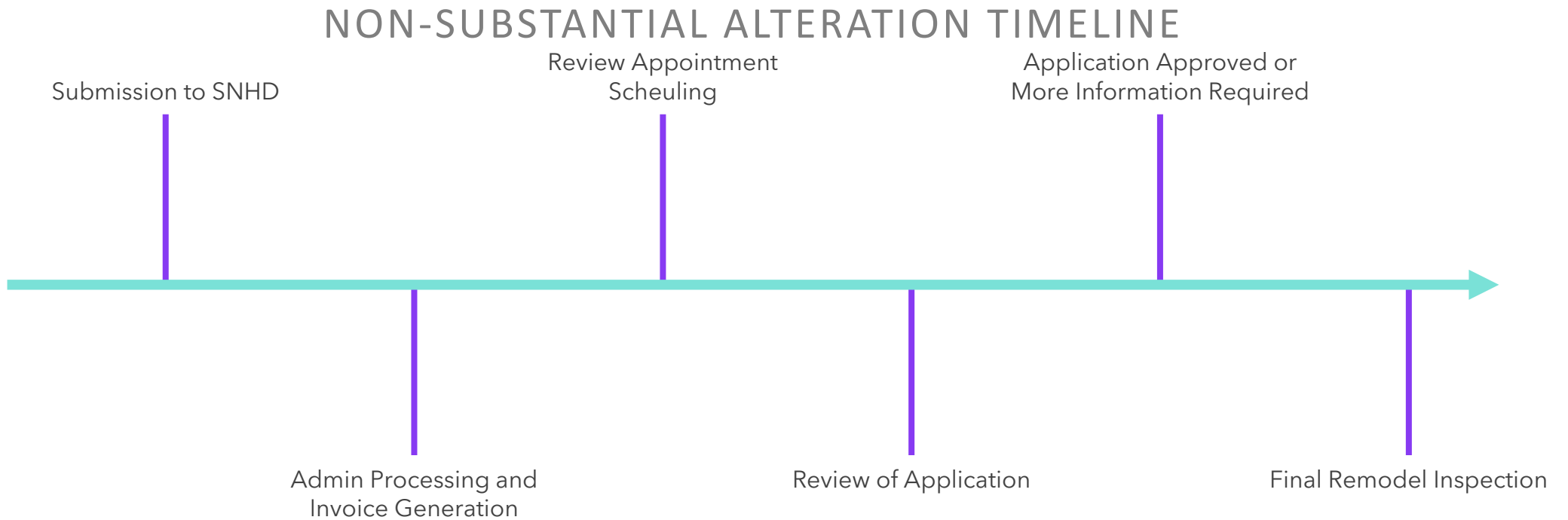
- A non-substantial alteration (remodel) is required if any part of the aquatic venue structure, equipment, or a related item is modified from the existing configuration
- Reviews are conducted to ensure regulatory compliance
- Equipment that is functionally identical to the outgoing equipment can be replaced using a substantially similar application





# Review and Approval Process

# Review and Approval



# Review and Approval

## Review Scheduling

Appointment times are blocked off on the plan reviewer's calendar to conduct the review

Review appointments are not meetings scheduled with the plan reviewer and the applicant, but the plan reviewer may need to contact the applicant for clarification during this time

# Review and Approval

## Review

Determine equipment acceptability – certified/listed to appropriate standard

Determine compliance with SNHD Aquatic Facility Regulations

Determine overall system compatibility

# Review and Approval

## **Specifications**

Specifications are required for all equipment

Model numbers or part numbers may be required

The installation manual typically contains all information required for review

For finish materials, specifications containing DCOF information may be required to determine slip resistance

# Review and Approval

## **Inspections**

Inspections appointments must be requested three business days in advance of the requested date

An expedited inspection is possible depending on SNHD availability. Expedited inspection fees will be assessed

Photographs may be accepted in lieu of some in-person inspection activities

The aquatic venue must remain closed from the time work begins until final approval is given by SNHD following the final remodel inspection



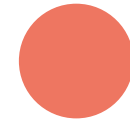


# Specific Alteration Scenarios

# Additional Compliance Requirements

Non-substantial alteration reviews are generally limited to the scope of work submitted.

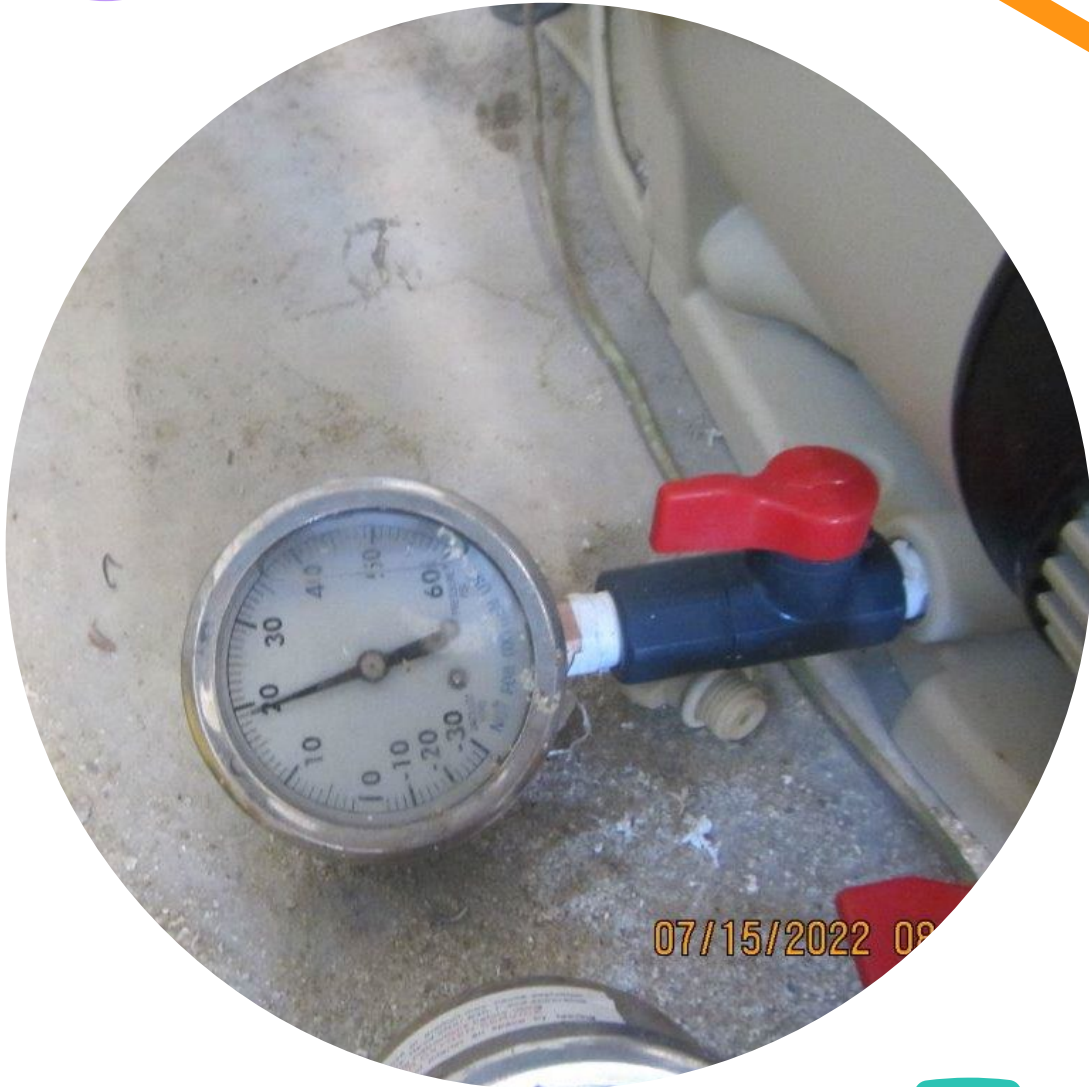
However, if the scope of work to be completed impacts other portions of the aquatic venue or aquatic facility, additional compliance requirements must be met.





# Pumps

- A flow meter will be required for VS or VSF pump installations
- 23.1' TDH is required between clean and dirty filter conditions
- Maximum operating flow of the pump cannot exceed max suction outlet fitting assembly (SOFA) rating
- Gauges must be equipped with valves to allow for servicing during operation



# Pumps

Gauges equipped with valves



# Filters

- A separate line must be installed to bypass the filter when draining the aquatic venue
- A sump pit/tank will be required in lieu of a separation tank for most DE filter installations





# Filters

Separate line directly to waste



# Disinfection and pH Control

- Effective October 1, a non-substantial alteration is required for all controller replacements
- Chemical feeders must be automated if a controller is replaced
- A controller is required for all disinfection system alterations
- Chemical containers must be enclosed in an equipment room or outdoor equipment enclosure



# Notes on Specific Equipment Models

- Replacement of Pentair Intelliflo VS/VSF/VS+SVRS pumps with Pentair Intelliflo3 pumps require a non-substantial alteration as the pumps are not identical
- Variable speed to variable flow pumps require a substantially similar replacement
  - A non-substantial alteration is required if operation will change the function of the pump (speed setting vs. flow setting)
- Raypak C-R406 (cast iron) to B-R406 (bronze) heater models require a non-substantial alteration as the heaters are not identical







# Interior Finish

- A non-substantial alteration is required if the finish material *or* finish color is changed
  - If SOFAs are replaced during a replaster, a non-substantial alteration is required regardless of interior finish
- Contrasting tile is required on the top and face of steps and benches
- Depth markers must be compliant with current requirements, including markings in feet *and* inches

# Interior Finish

Top: Depth markers in FT and IN

Bottom: Contrasting tile on stairs and benches



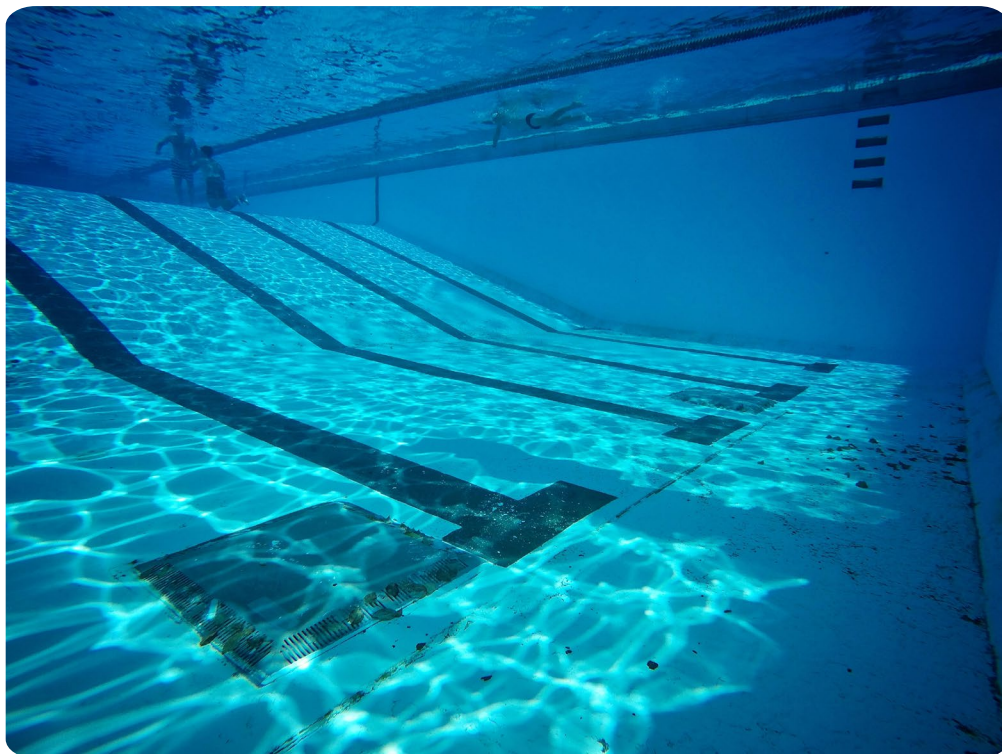
# Skimmers

- Skimmer equalizer SOFAs must meet the installation requirements for SOFAs, including sump and plumbing requirements
- All skimmer replacements require a non-substantial alteration

*\*Skimmer equalizers are not required by SNHD if the skimmer is approved for commercial use without an equalizer*







# SOFAs

- New testing standard requires plumbing configuration to be known *before* selecting a replacement SOFA
- Maximum operating flow of the pump cannot exceed max (SOFA) rating
- All SOFAs have a finite lifespan established by the manufacturer
- A SOFA worksheet must be completed and submitted for all SOFA alterations (including equalizers and VGB 2008 products)
- More information: [snhd.info/sofa](https://snhd.info/sofa)

# Decks

- If deck is partially or completely demolished and replaced or the finish material is changed, an alteration is required
- Deck alterations may impact hand/grabrail height, stair riser height, and coping/overhang dimensions
- Compliant deck depth markings and no diving markings must be provided
- Deck drains must be removable without the use of a tool
- Beware of broken skimmers during deck removal! If skimmers are replaced, they must be submitted with the scope of work







# Enclosures

- 6' height requirement must be met for all enclosure alterations
- New/modified sections of the enclosure must be installed over a fixed, solid surface
- Handles, keyfob readers, or keypads must measure at least 42" from grade to the bottom of the mechanism
- Battery backup is required for electronic latching mechanisms
- Gates and doors must be able to be opened from the inside without the use of a key, tool, or code
- Building doors cannot egress into the enclosure

# Enclosures

- Installed over a fixed, solid surface



A large blue circle containing the text "SOFA Worksheet" in white. To the left of the circle, there are five teal-colored dashed lines of varying lengths, arranged in a curved pattern. At the bottom right of the blue circle, there is a small purple circle.

# SOFA Worksheet




# SOFA Worksheet

- Must be submitted with all SOFA replacements
  - VGBA 2017 **and** VGB 2008
- Include all information required to determine flow rating
- The applicant is responsible for ensuring that all installation requirements are met

Suction System: Choose one

Model #		Max Flow Rating	GPM	Choose one
Location	Choose one	SOFA Quantity		
# of ports		Min Sump Depth	in	

	Port 1	Port 2	Port 3	Port 4
Pipe size				
Port location				
Pump model				
Pump maximum potential flow				
Pump actual flow				



Q&A



Thank you

SNHD Aquatic Health Plan  
Review

[aquatic@snhd.org](mailto:aquatic@snhd.org)

[www.snhd.info](http://www.snhd.info)