

# **Clean Harbors Las Vegas**

## **Application for Permit to Operate a Solid Waste Management Facility**

### **Part 2**

1. Design Report: Attached
2. Operating Plan: Attached
3. Closure Statement: Attached
4. Cost Estimate: Attached
5. All Plans: Attached
6. Stand Alone Equipment List: Attached
7. Financial Assurance Mechanism: Attached

## DESIGN REPORT

**Clean Harbors Environmental Services, Inc.**  
**Design Report**

Facility Name: Clean Harbors Environmental Services, Inc.

Address: 4435 East Colton Avenue  
Las Vegas, Nevada 89115

Parcel Number: 140-08-401-016

Section 1: Facility Information

Section 2: Facility Control

Section 3: Management Areas

Section 4: Environmental Controls

Section 5: Facility Specific Design Requirements

I certify that this Design Report for Clean Harbors Environmental Services, Inc. was prepared under my supervision, contains provisions that are adequate to comply with the applicable requirements, and to the best of my knowledge, is complete and accurate.



Signature

Chris Carrier

Name of Professional Engineer

024060

NV

Registration Number

State



2-21-23

PE Seal

## **Section 1: Facility Information**

### Facility:

Facility Name: Clean Harbors Environmental Services, Inc.  
Address: 4435 East Colton Avenue  
Las Vegas, Nevada 89115  
Parcel Number: 140-08-401-016  
Phone: (702) 396-4148  
Website: <http://www.cleanharbors.com>

### Owner:

Name: Alan S. McKim  
Title: CEO  
Company: Clean Harbors Environmental Services, Inc.  
Address: 42 Longwater Drive  
Norwell, Massachusetts 02061  
Phone: (800) 645-8265

Hours of Operation: 7:00 am to 5:00 pm Monday through Friday  
The facility is not open to the public

Aerial-view, street-view, and other photographs of the facility are provided in Part 1.

Materials accepted are restricted to drums of pre-drained used oil filters.

## **Section 2: Facility Control**

### **Section 2.1: Access Control**

The facility will have the following provisions for controlling access to the facility as to time of use and as to those authorized to use the site in order to prevent unauthorized vehicular traffic and illegal dumping:

1. A CMU wall topped with barbed wire along the perimeter of the property.
2. Two access gates into the back lot, which are closed and locked when the facility is not in operation.
3. All entrances into the employee facilities are locked after business hours.

### **Section 2.2: Access Roads**

The access roads to the facility and the processing area are shown on the Site Plan in Part 2. The access roads are all paved with asphalt pavement and properly graded and drained to provide easy access in all weather conditions to all vehicles expected to use them.

### **Section 2.3: Traffic**

Please refer to the Site Plan included in Part 2 for the traffic flow at the facility.

### **Section 3: Management Areas**

#### **Section 3.1: Areas of Activity**

The facility occupies Clark County Assessor Parcel No. APN 140-08-401-016. The Site Plan in Part 2 shows the boundaries of the facility. The property is approximately 75,255 square feet. The outside waste management area consists of approximately 43,000 square feet.

The used oil filter bulking operation covered by this application will be located within the outside waste management area as shown on the Site Plan included in Part 2. The Process Flow Diagram in Part 2 depicts the general activity associated with this application.

#### **Section 3.2: Anticipated waste types, quantities, and sources**

The facility will only accept used oil filters which have been drained of oil prior to delivery at the facility. The filters will be received in 55-gallon drums from TFI and Safety Kleen. It is anticipated that a maximum of 150 drums (50 cubic yards) of used oil filters will be handled monthly. The facility will be capable of storing a maximum of twelve (12), 2 cubic yard storage bins for a total of twenty-four (24) cubic yards. The contents of the storage bins will be periodically picked up by Oil Filter Recycling, Inc. and transported to Thermal Fluids in Phoenix, AZ.

### **Section 4: Environmental Controls**

#### **Section 4.1: Air Control**

The facility will have the following provisions for controlling air pollutants, including fugitive dust, to prevent a public nuisance:

1. Paved access roads inside and around the facility.
2. Paved outdoor waste storage areas.

Part 3 contains documentation of air control approval from the Clark County Division of Air Quality.

#### **Section 4.2: Fire Control**

The facility is equipped with fire extinguishers in various locations, which may be used to extinguish small fires in the processing area. The nearest fire station is Station 23 located on 4250 E. Alexander Road, which is approximately 1 mile from the facility. Copies of a Clark County Fire Department Permit and Nevada State Fire Marshall permit for the facility are provided in Part 3.

#### **Section 4.3: Pollution Control**

All oil filters will properly drained of all free-flowing used oil prior to acceptance by Clean Harbors. The drained used oil filters are categorically excluded from the definition of a hazardous waste under the Resource Conservation and Recovery Act (RCRA). Under 40 CFR 279.10(c)(1), "materials containing or otherwise contaminated with used oil from which the used oil has been properly drained or removed to the extent possible such that no visible signs of free-flowing oil remain in or on the material are not used oil and thus not subject to this part." As such, the used oil filters would be recycled as scrap metal. Therefore, the used oil filters are not subject to the SSMA Chapter 4-3 restricted waste regulations.

The wastes to be handled are scrap metal and will be contained in metal storage bins with plastic lids until they are emptied onto a collection truck for transport offsite. In addition, as shown on the Site Plan, the storage area for these bins consists of a bermed containment basin. For these reasons, no pollution is anticipated to be created by this operation.

#### **Section 4.4: Storm Water Control**

Stormwater discharges from the facility are authorized by NDEP through the General Permit for Stormwater Discharges Associated with Industrial Activity NVR050000. A Stormwater Pollution Prevention Plan (SWPPP) is maintained at the facility as required by this permit and is included in Part 3.

#### **Section 4.5: Litter Control**

The entire waste processing area is completely enclosed by a CMU wall and the employee facilities building. Any debris that collects in the property is promptly collected and properly disposed.

#### **Section 4.6: Odor Control**

Clean Harbors does not anticipate that the used oil filter bulking operation will cause any odors.

#### **Section 4.7: Vector Control**

Any debris is promptly cleaned from the facility and not allowed to accumulate. The grading of the facility property prevents ponding. Any accumulated water shall be removed within 72 hours to prevent the formation of a mosquito breeding environment. Please refer to the facility's SWPPP in Part 3 for further stormwater control procedures.

### **Section 5: Facility Specific Design Requirements**

Recycling Centers have no specific design criteria that are in addition to the Chapter 2 Standards (SWMA Chapter 3-7.01).

## OPERATING PLAN

**Clean Harbors Environmental Services, Inc.**  
**Operating Plan**

Section 1: Facility

Section 2: Equipment

Section 3: Types of Waste

Section 4: Contingency Plans

Section 5: Operating Records



## **Section 1: Facility**

### Facility:

Facility Name: Clean Harbors Environmental Services, Inc.  
Address: 4435 East Colton Avenue  
Las Vegas, Nevada 89115  
Parcel Number: 140-08-401-016  
Phone: (702) 396-4148  
Website: <http://www.cleanharbors.com>

### Owner:

Name: Alan S. McKim  
Title: CEO  
Company: Clean Harbors Environmental Services, Inc.  
Address: 42 Longwater Drive  
Norwell, Massachusetts 02061  
Phone: (800) 645-8265

Hours of Operation: 7:00 am to 5:00 pm Monday through Friday  
The facility is not open to the public

The facility will have the following provisions for controlling access to the facility as to time of use and as to those authorized to use the site to prevent unauthorized vehicular traffic and illegal dumping:

1. A CMU wall topped with barbed wire along the perimeter of the property.
2. Two access gates into the back lot, which are closed and locked when the facility is not in operation.

All entrances into the employee facilities are locked after business hours.

The access roads to the facility and the processing area are shown on the Site Plan in Part 2. The access roads are all paved with asphalt pavement and properly graded and drained to provide easy access in all weather conditions to all vehicles expected to use them.

The facility will process up to 150 drums (50 cubic yards) of used oil filters per month and a maximum of 24 cubic yards of used oil filters will be stored on site. The storage area will be inspected weekly to ensure that adequate storage capacity is maintained for the next scheduled pick up.

The processing area is completely enclosed by a CMU wall and the employee facilities building. Any debris that collects in the property is promptly collected and properly disposed.

## **Section 2: Equipment**

### **Section 2.1: Equipment List**

The only equipment directly associated with the used oil filter bulking operation are the 2 cubic yard storage bins. The bins have plastic covers and a roller attachment so they can be easily moved by hand. Clean Harbors equipment will not be used to bring drums of oil filters to the facility nor transport used oil filters from the facility. Trucks used for transporting used oil filters are operated and maintained by Oil Filter Recycling, Inc.(OFR). A photograph of the bins and OFR truck are included in Part 1.

Please refer to the Part 2 for a complete list of equipment at the facility.

## **Section 2.2: Equipment Maintenance**

The metal storage bins are provided by OFR. The bins will be routinely inspected and can be replaced by OFR if necessary.

All mobile equipment maintenance performed onsite complies with SNHD's Solid Waste Management Authority (SWMA) Chapter 4-3 regulations regarding restricted waste management, as applicable. Restricted waste may include used oil, grease, and fluids generated during maintenance of the equipment. Used oil shall be stored in 55-gallon drums that are structurally sound, properly sealed, and labeled according to its contents. Clean Harbors shall remove and properly dispose of the used oil. Clean Harbors shall maintain documentation proving proper disposal of all used oil for a minimum of three years.

## **Section 3: Types of Waste**

### **Section 3.1: Accepted Wastes**

The facility only accepts used oil filters which have been drained of oil prior to delivery at the facility. The filters will be received in 55-gallon drums from TFI and Safety Kleen. It is anticipated that a maximum of 150 drums (50 cubic yards) of used oil filters will be handled monthly. The facility will be capable of storing a maximum of twelve (12), 2 cubic yard storage bins for a total of twenty-four (24) cubic yards. The contents of the storage bins will be periodically picked up by Oil Filter Recycling, Inc. and transported to Thermal Fluids in Phoenix, AZ. The storage area will be inspected weekly to ensure that adequate storage capacity is maintained for the next scheduled pick up.

### **Section 3.2: Prohibited Wastes**

Clean Harbors does not accept prohibited waste. Clean Harbors may refuse to accept a load from a client that contains hazardous materials. An accurate record of any rejection or inadvertent receipt of prohibited wastes shall be maintained by Clean Harbors. SNHD shall be notified by the next working day, in writing and in a format specified by SNHD, of all rejected loads.

### **Section 3.3: Waste Characterization**

The used oil filters that will be accepted by Clean Harbors will be drained of any free-flowing oil prior to receipt at the facility. Under 40 CFR 279.10(c)(1), "materials containing or otherwise contaminated with used oil from which the used oil has been properly drained or removed to the extent possible such that no visible signs of free-flowing oil remain in or on the material are not used oil and thus not subject to this part." As such, the used oil filters would be recycled as scrap metal and no further characterization is necessary.

### **Section 3.4: Waste Transportation**

Solid waste accepted by the facility is only transported to another facility that has been issued a permit by the Health Authority for any other Solid Waste Management Authority and/or applicable agency of jurisdiction over the location of the facility or used in a manner that does not constitute disposal. No putrescible residual solid waste is handled by the facility.

## **Section 4: Contingency Plans**

Clean Harbors trains employees on spill prevention and control, which are applicable for safely maintaining the processing area and the oil/water contents. A record of employee training is maintained at the facility. In the event of an emergency, facility personnel shall immediately dial 911 for emergency services.

If an emergency occurs:

1. All employees will evacuate the facility via the nearest available exit as per the Emergency Escape Plan. They will re-group at the designated gathering area or at an alternative gathering area if the first one is inaccessible. The Emergency Response Coordinator will affirm that everyone was safely evacuated.
2. The Emergency Response Coordinator will call 911.
3. All traffic in the parking lot and in any receiving or shipping area will be immediately directed to vacate the property to ensure maximum space for emergency response vehicles.
4. The Emergency Response Coordinator shall contact Mr. William Roberts at 702-758-6019. Mr. Roberts shall be responsible for providing required notification and reports to SNHD and other authorities as soon as possible.
5. The Emergency Response Coordinator shall document the event including the nature of the event, the adequacy of employee responses, the response of emergency response authorities, and any witness statements. The managers shall compile the reports together with an assessment of damages, if any.

An accurate record of employee training and any emergencies or unusual events will be maintained at the facility.

The facility is equipped with fire extinguishers, which may be used to extinguish small fires in the processing area. In the event of an emergency, all personnel shall evacuate the facility and call 911 for emergency assistance. Evacuation routes are shown on the Site Map in Part 2.

Copies of current the Spill Prevention, Control, and Countermeasures (SPCC) Plan and Stormwater Pollution Prevention Plan (SWPPP) are included in Part 3. Both contain procedure for emergency response.

### **Section 5: Operating Records**

Clean Harbors shall abide by the requirements of SWMA Chapter 2-5.03 Operating Records, which includes submitting the SNHD recycling survey by February 15<sup>th</sup> each year.

## CLOSURE STATEMENT

**CLOSURE PLAN**  
**Clean Harbors Las Vegas**

The owner of the facility will notify the Southern Nevada Health District (SNHD) in writing at least 90 days before beginning closure of the facility. The **Clean Harbors Las Vegas** facility is located at 4435 East Colton Ave., Las Vegas, Nevada, 89115. The owner will also notify all generators and haulers of wastes managed by the facility both by phone where possible, and in writing that the facility will not accept any solid waste after the designated closing date.

The Owner or designated Operator shall, within 30 days after receiving the final shipment of solid waste, remove all remaining solid waste, litter, and inoperable equipment, in accordance with the plan for closure of the facility. All putrescible waste (if any) will be removed within 24 hours of receipt of the notice of closure.

The Owner/Operator will remove up to the Permitted Storage Capacity of solid waste and transport said waste to an approved Class I, II, or III receiving facility. The Closure cost document is based solely on the estimate to load, transport, and dispose of the solid waste in question. The estimate does not consider the resale value of the equipment or material onsite at the facility.

Following disposal of the solid waste onsite, the Owner/Operator will clean the site to in accordance with normal standards required by the SNHD.

Following the completion of closure activities, the operator will notify SNHD to arrange for a final inspection of the facility in order to permit SNHD to verify successful completion of closure.

William Roberts  
Print and Sign



12/27/2022

Date

## COST ESTIMATE

## Cost of Closure Estimate

As part of the application for a permit to operate a permitted solid waste management facility, a cost of closure estimate is required to be included, as outlined in the Solid Waste Management Authority Regulations (SWMAR) 2-6.01. This cost estimate will be used to establish financial assurance (SWMAR 2-7) for the facility. Submittal of this form meets the cost of closure estimate requirement for the application for a permit.

### Facility Information

Facility Name:	Clean Harbors Las Vegas		
Facility Address:	4435 East Colton Ave.		
Type of Facility being applied for:	Recycling Center		
Contact:	William Roberts		
Email:	<a href="mailto:roberts.william@cleanharbors.com">roberts.william@cleanharbors.com</a>	Phone:	702-396-4148

The cost of closure estimate must be sufficient to cover the cost of closing the facility including the removal, hauling, and proper disposal at a permitted landfill<sup>1</sup>, of the maximum permitted solid waste storage capacity. **The cost of closure estimate may not consider the resale value of equipment or other materials at the facility.**

### Cost of Closure Estimate

Permitted Storage Capacity:	25 Cubic Yards of Pre-Drained Oil Filters
Labor & Equipment Cost:	██████████
Transportation Cost:	██████████
Disposal Cost at permitted Landfill:	██████████
Other (Specify):	
Other (Specify):	
Other (Specify):	
Total:	██████████

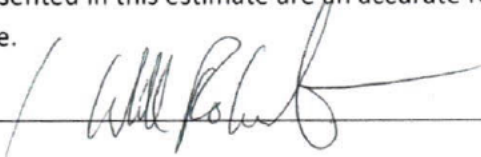
<sup>1</sup> Proper disposal for material(s) not accepted at a Class I, II or III landfill must be included as *Other (Specify)*:

### Certification

I hereby certify that the costs represented in this estimate are an accurate reflection of the current market to the best of my knowledge.

Print/Sign

William Roberts



Date

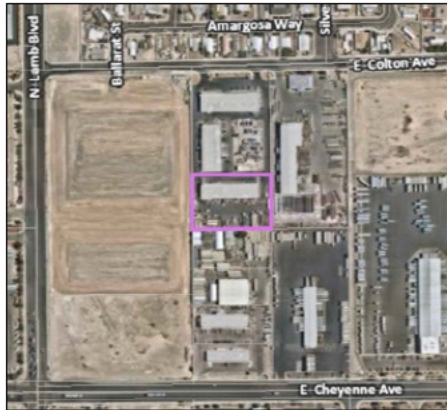
2/3/2023

## ALL PLANS

Site Plan

Process Flow Diagram



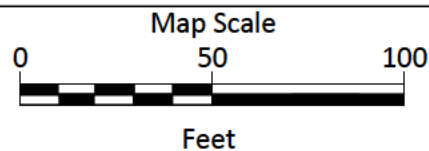
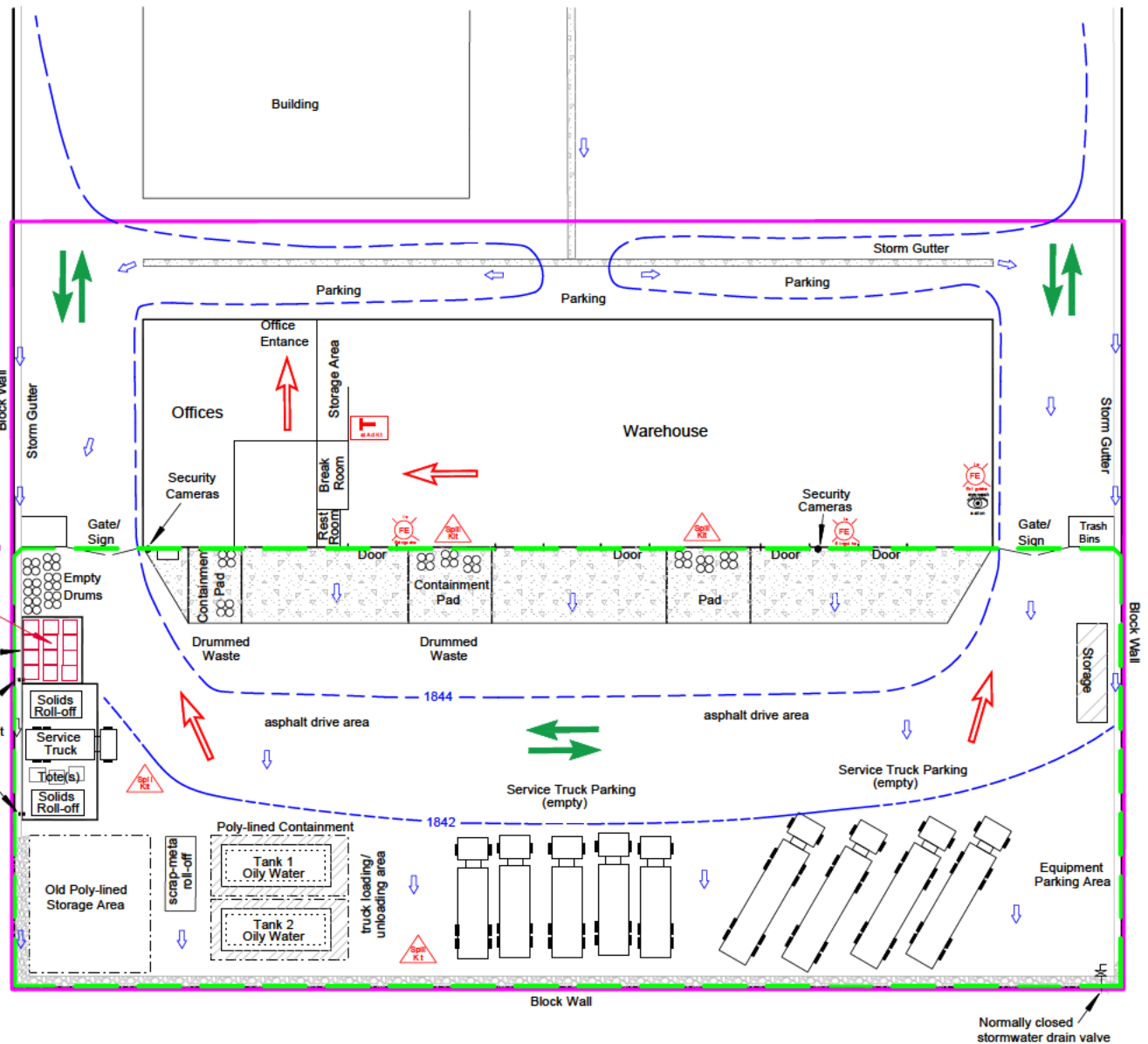


Vincinity Map  
(not to scale)

- Runoff Direction
- Elevation (ft)
- Evacuation Routes
- Traffic Direction
- Property Boundary
- Waste Management Area

Used Oil Filter Bins  
(exact location may vary within the Waste Management Area)

Containment Pad  
pad drainage conduit  
(normally plugged)



Clean Harbors  
4435 E. Colton Ave.  
Las Vegas, NV 89115

Project Number:  
11-01-162-003

Prepared By: R. Harms  
Reviewed By: C. Carrier  
Date: 02/16/2023

**Drawing 1**  
Site Map



\* No Public Access



Clean Harbors  
4435 E. Colton Ave.  
Las Vegas, NV 89115

Project Number:  
11-01-162-003

Prepared By: R. Harms  
Reviewed By: C. Carrier  
Date: 10/17/2022

**Drawing 2**  
Process Flow  
Diagram

## STAND ALONE EQUIPMENT LIST



## Clean Harbors – Recycling Center Equipment List

4435E. Colton Ave Ste #101, Las Vegas NV, 89115

<u>Year</u>	<u>Description</u>	<u>Specifications</u>	<u>Asset #</u>	<u>Make</u>
2023	Oil Filter Bins	2 cubic yard (12)	NA	NA

## FINANCIAL ASSURANCE MECHANISM

Clean Harbors will provide the required Financial Assurance as soon as it is available.