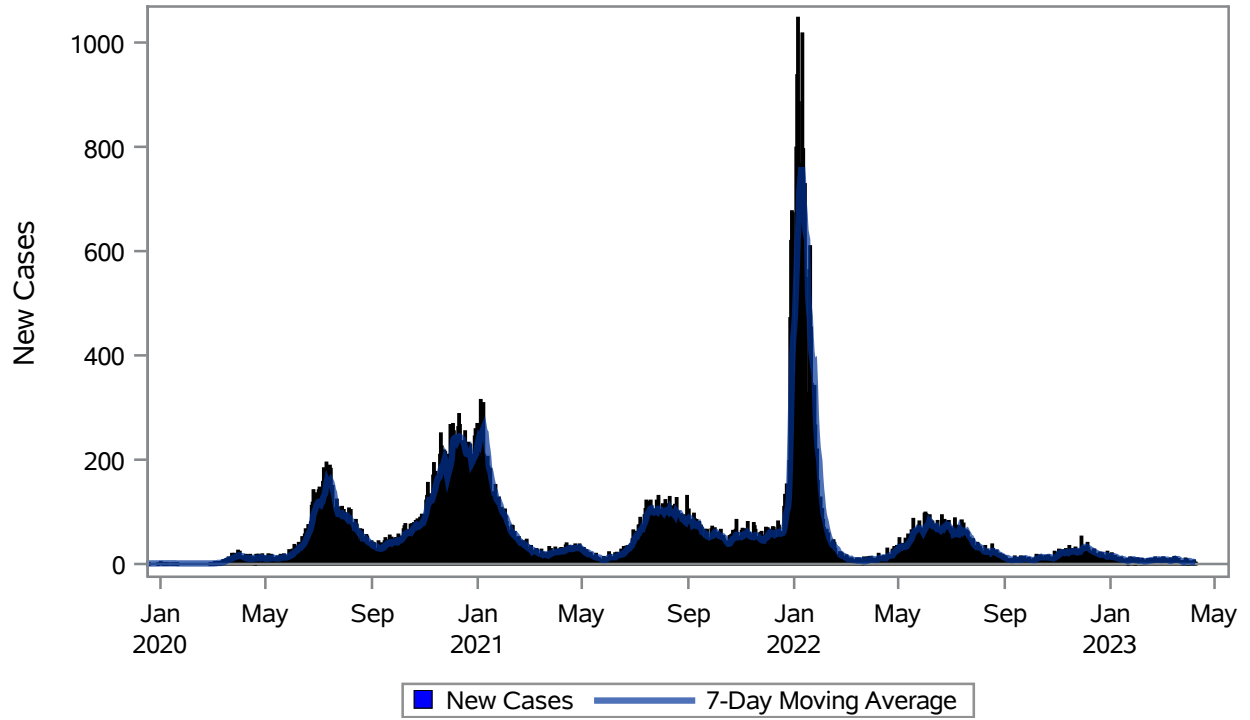


### COVID19 Cases for North Las Vegas, 7-Day Moving Average



Investigations are ongoing; data are subject to change.

Reporting through 10APR2023

North Las Vegas zip codes include 89030, 89031, 89032, 89033, 89036, 89081, 89084, 89085, 89086, 89087.

**Table 1: New COVID19 Cases and 7-Day Moving Average in North Las Vegas, Previous Two Weeks**

Date (Daily)	New Cases	7-Day Moving Average
28MAR2023	10	4.43
29MAR2023	9	5.14
30MAR2023	7	5.43
31MAR2023	1	5.14
01APR2023	4	5.43
02APR2023	4	5.71
03APR2023	3	5.43
04APR2023	2	4.29
05APR2023	4	3.57
06APR2023	4	3.14
07APR2023	6	3.86
08APR2023	2	3.57

---

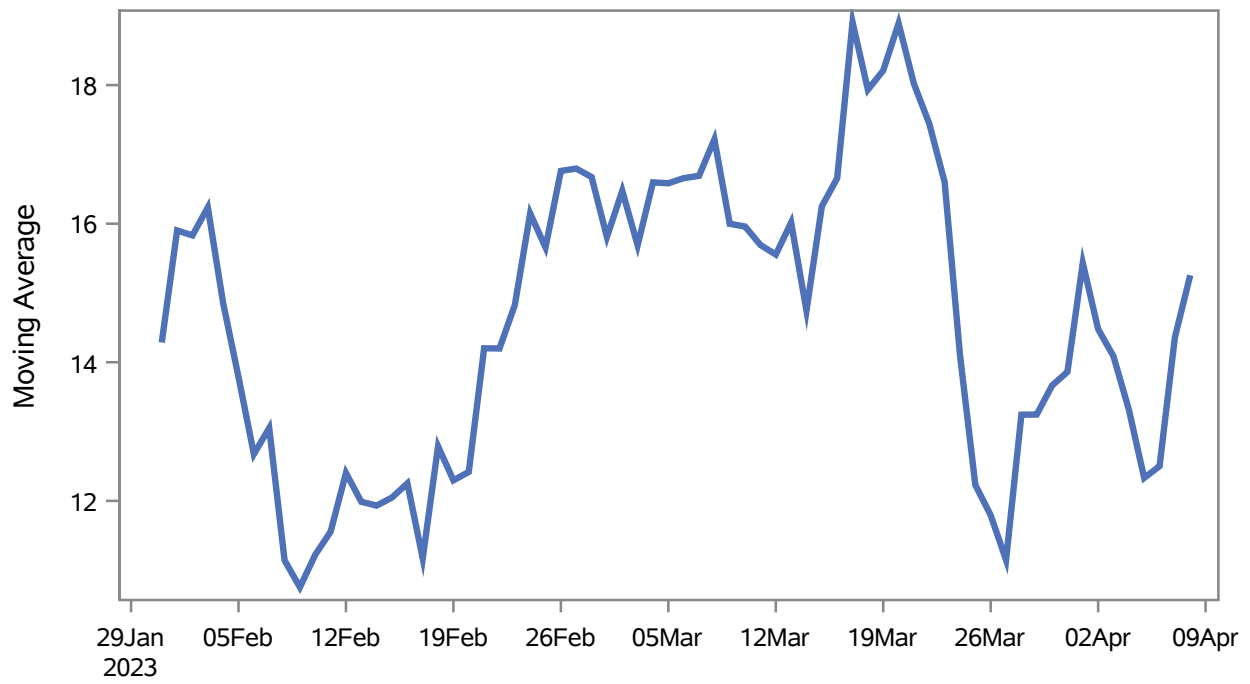
Note1: Event Date is calculated as follows based on completed information:  
1) Disease onset date 2) Disease diagnosis date 3) Lab result collection date 4) Report date to SNHD.

---

**Investigations are ongoing; data are subject to change.  
Reporting through 10APR2023**

**North Las Vegas zip codes include 89030, 89031, 89032, 89033, 89036, 89081, 89084, 89085, 89086, 89087.**

### Percent of People Receiving COVID-19 Viral Tests Who Have Positive Results in North Las Vegas



Investigations are ongoing; data are subject to change.

Reporting through 10APR2023

North Las Vegas zip codes include 89030, 89031, 89032, 89033, 89036, 89081, 89084, 89085, 89086, 89087.

**Table 2: Percent of People Receiving COVID-19 Viral Tests Who Have Positive Results in North Las Vegas**

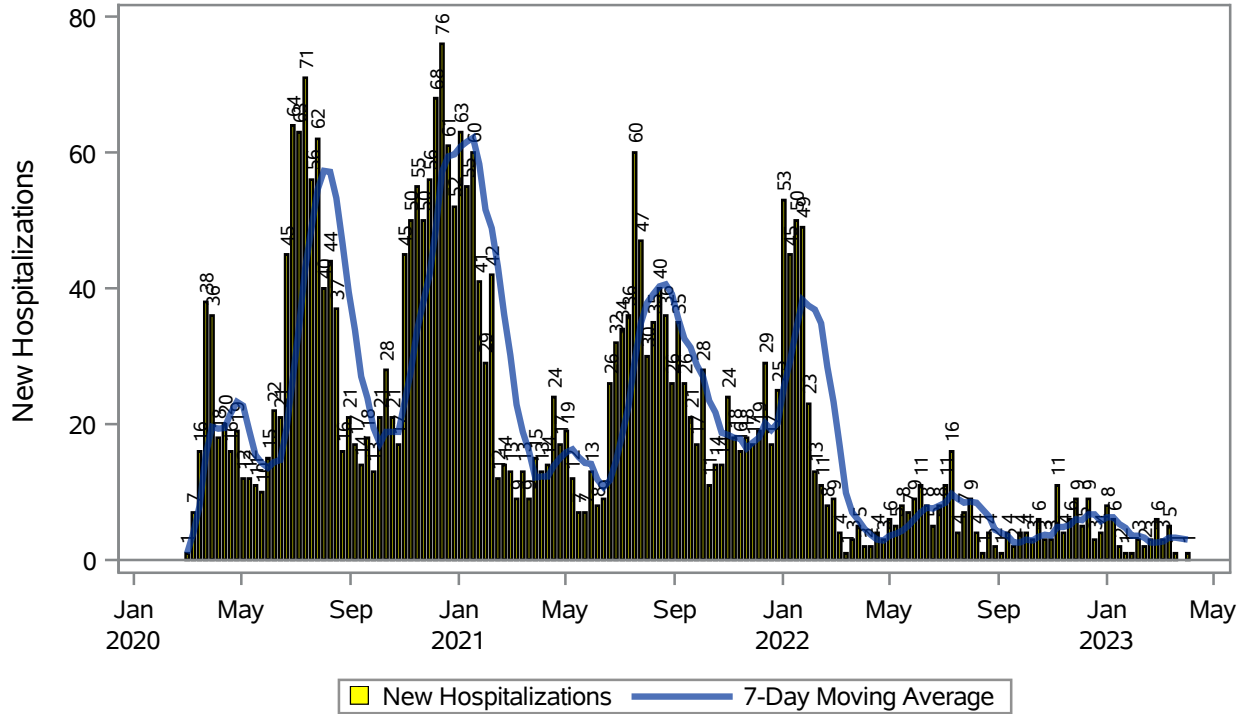
Collection Date	Positive	Negative	Equivocal	Total	% Positivity	7-Day Moving Average
25MAR2023	2	46		48	4.17	12.2
26MAR2023	7	35		42	16.67	11.8
27MAR2023	12	79		91	13.19	11.1
28MAR2023	12	49		61	19.67	13.2
29MAR2023	17	64		81	20.99	13.2
30MAR2023	9	48		57	15.79	13.7
31MAR2023	4	57		61	6.56	13.9
01APR2023	5	28		33	15.15	15.4
02APR2023	5	45		50	10.00	14.5
03APR2023	7	60		67	10.45	14.1
04APR2023	8	48		56	14.29	13.3
05APR2023	10	61		71	14.08	12.3
06APR2023	9	44		53	16.98	12.5
07APR2023	9	37		46	19.57	14.4
08APR2023	6	22		28	21.43	15.3

Note: Testing Data includes a 3 day delay

**Investigations are ongoing; data are subject to change.  
Reporting through 10APR2023**

**North Las Vegas zip codes include 89030, 89031, 89032, 89033, 89036, 89081, 89084, 89085, 89086, 89087.**

### COVID19 Hospitalizations for North Las Vegas, 7-Day Moving Average



Investigations are ongoing; data are subject to change.

Reporting through 10APR2023

North Las Vegas zip codes include 89030, 89031, 89032, 89033, 89036, 89081, 89084, 89085, 89086, 89087.

**Table 3: New COVID19-Related Hospitalizations and 7-Day Moving Average in North Las Vegas, previous month**

Week	Hospitalizations	7-Day Moving Average
12MAR2023	5	3.29
19MAR2023	1	3.29
02APR2023	1	3.00

---

Note1: Admission Date is calculated as follows based on completed information:  
A) COVID19 Case is hospitalized B) COVID19 Case has a hospital admission date.

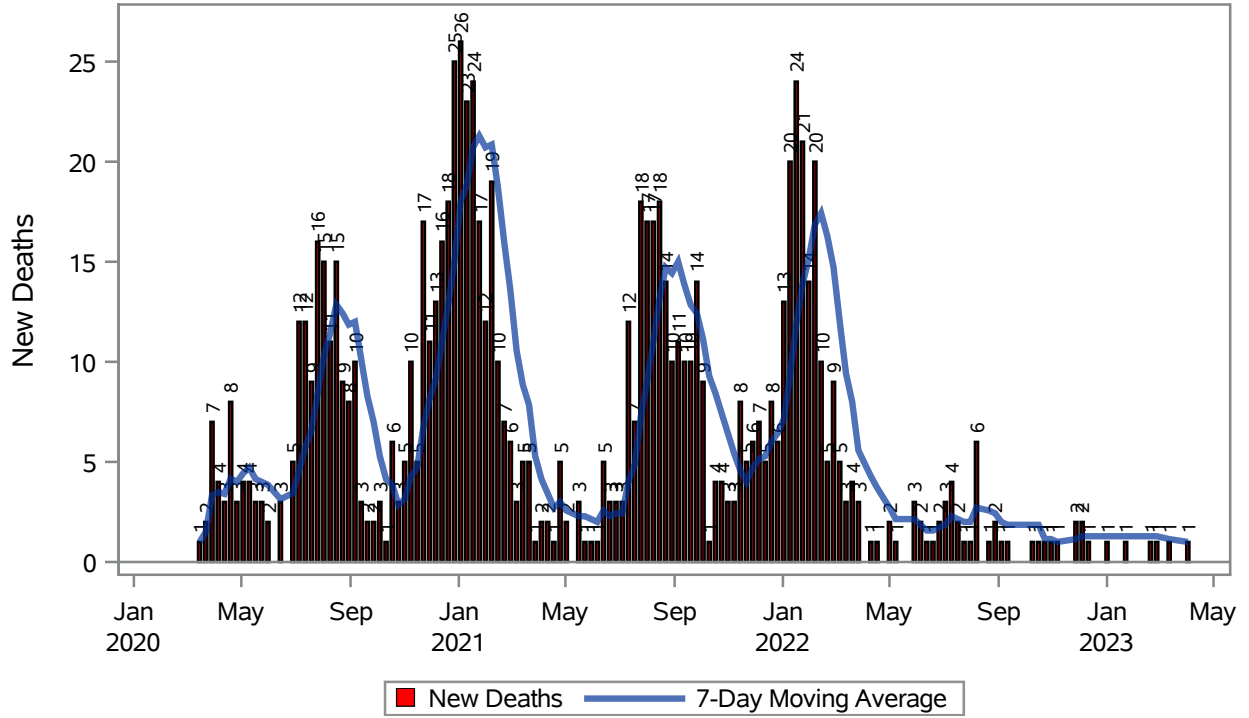
If admission date is missing, then the following is substituted temporarily, in order:  
1) Disease onset date 2) Disease diagnosis date 3) Lab result collection date 4) Report date to SNHD.

---

**Investigations are ongoing; data are subject to change.  
Reporting through 10APR2023**

**North Las Vegas zip codes include 89030, 89031, 89032, 89033, 89036, 89081, 89084, 89085, 89086, 89087.**

### COVID19 Deaths for North Las Vegas, 7-Day Moving Average



Investigations are ongoing; data are subject to change.  
Reporting through 10APR2023

North Las Vegas zip codes include 89030, 89031, 89032, 89033, 89036, 89081, 89084, 89085, 89086, 89087.

**Table 4: New COVID19-Related Deaths and 7-Day Moving Average in North Las Vegas, Previous Month**

Week	Deaths	7-Day Moving Average
12MAR2023	1	1.14
02APR2023	1	1.00

---

Note1: Date of Death is calculated as follows based on completed information:  
A) COVID19 Case is reported as deceased B) COVID19 Case has a reported date of death.

If date of death is missing, then the following is substituted temporarily, in order:  
1) Disease onset date 2) Disease diagnosis date  
3) Lab result collection date 4) Report date to SNHD.

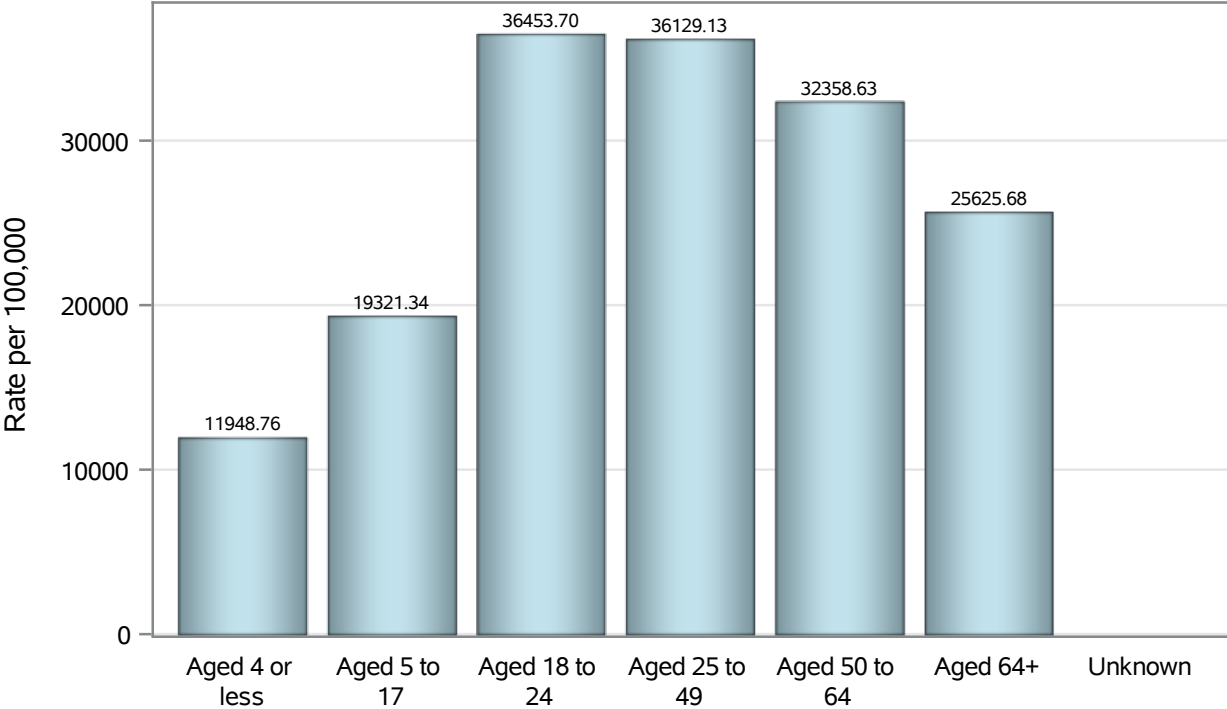
---

**Investigations are ongoing; data are subject to change.  
Reporting through 10APR2023**

**North Las Vegas zip codes include 89030, 89031, 89032, 89033, 89036, 89081, 89084, 89085, 89086, 89087.**



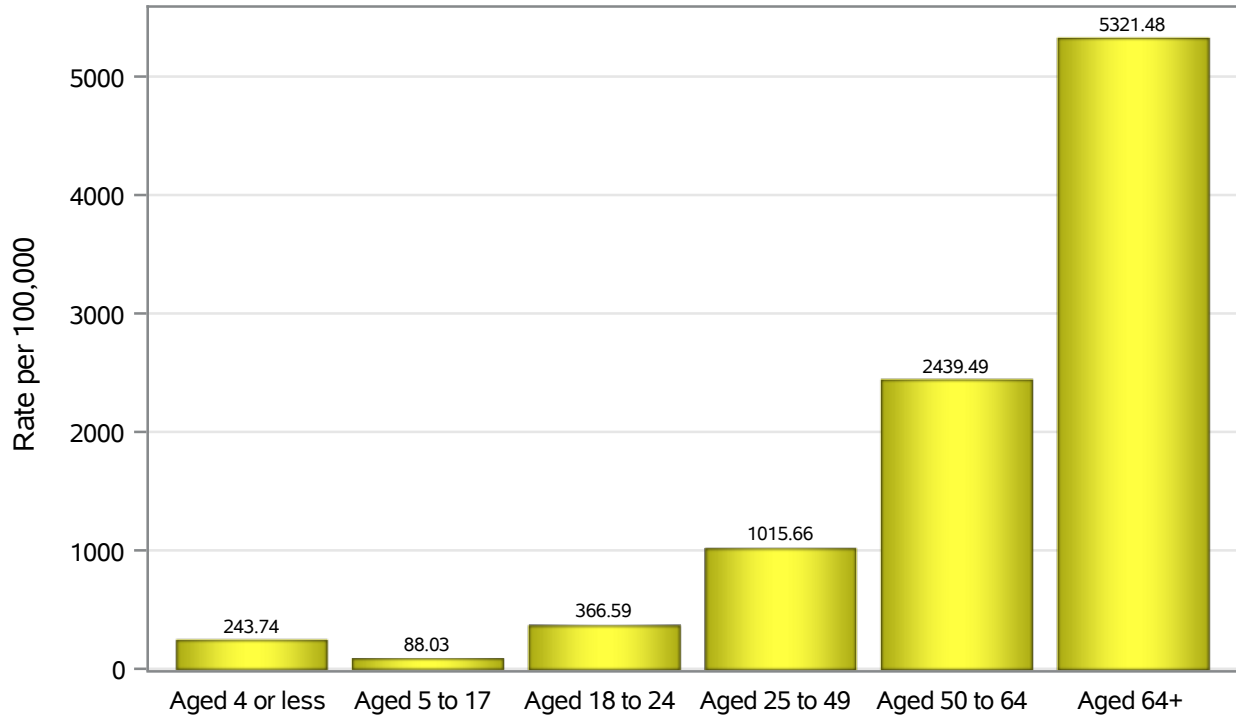
### Case Age Rates in North Las Vegas



Investigations are ongoing; data are subject to change.  
Reporting through 10APR2023

North Las Vegas zip codes include 89030, 89031, 89032, 89033, 89036, 89081, 89084, 89085, 89086, 89087.

### Hospitalization Age Rates in North Las Vegas

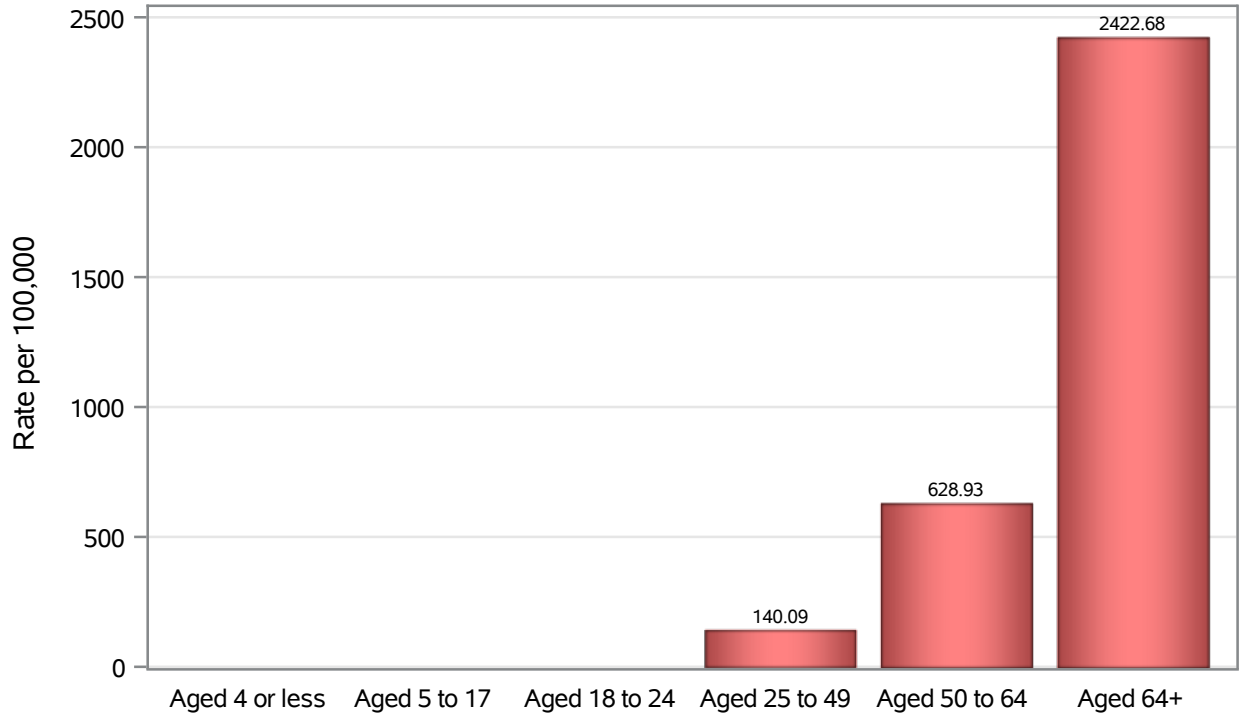


Investigations are ongoing; data are subject to change.

Reporting through 10APR2023

North Las Vegas zip codes include 89030, 89031, 89032, 89033, 89036, 89081, 89084, 89085, 89086, 89087.

### Death Age Rates in North Las Vegas



Investigations are ongoing; data are subject to change.

Reporting through 10APR2023

North Las Vegas zip codes include 89030, 89031, 89032, 89033, 89036, 89081, 89084, 89085, 89086, 89087.

**Table 5: Age and COVID19 in North Las Vegas**

Case Status	Age Categories	N	%	Population	Rate per 100,000
Cases	Aged 4 or less	2108	3.1	17,642	11949
	Aged 5 to 17	9657	14.2	49,981	19321
	Aged 18 to 24	8353	12.3	22,914	36454
	Aged 25 to 49	29916	44.0	82,803	36129
	Aged 50 to 64	11885	17.5	36,729	32359
	Aged 64+	6082	8.9	23,734	25626
	Unknown	15	0.0	.	.
Hospitalizations	Aged 4 or less	43	1.4	17,642	243.74
	Aged 5 to 17	44	1.4	49,981	88.03
	Aged 18 to 24	84	2.6	22,914	366.59
	Aged 25 to 49	841	26.5	82,803	1015.7
	Aged 50 to 64	896	28.3	36,729	2439.5
	Aged 64+	1263	39.8	23,734	5321.5
	Deaths	Aged 4 or less	3	0.3	17,642
Aged 5 to 17		1	0.1	49,981	.
Aged 18 to 24		2	0.2	22,914	.
Aged 25 to 49		116	12.5	82,803	140.09
Aged 50 to 64		231	24.9	36,729	628.93
Aged 64+		575	62.0	23,734	2422.7

Note1: Population data source for calculating rate estimates: U.S. Census Bureau, ACS 5-year estimate.

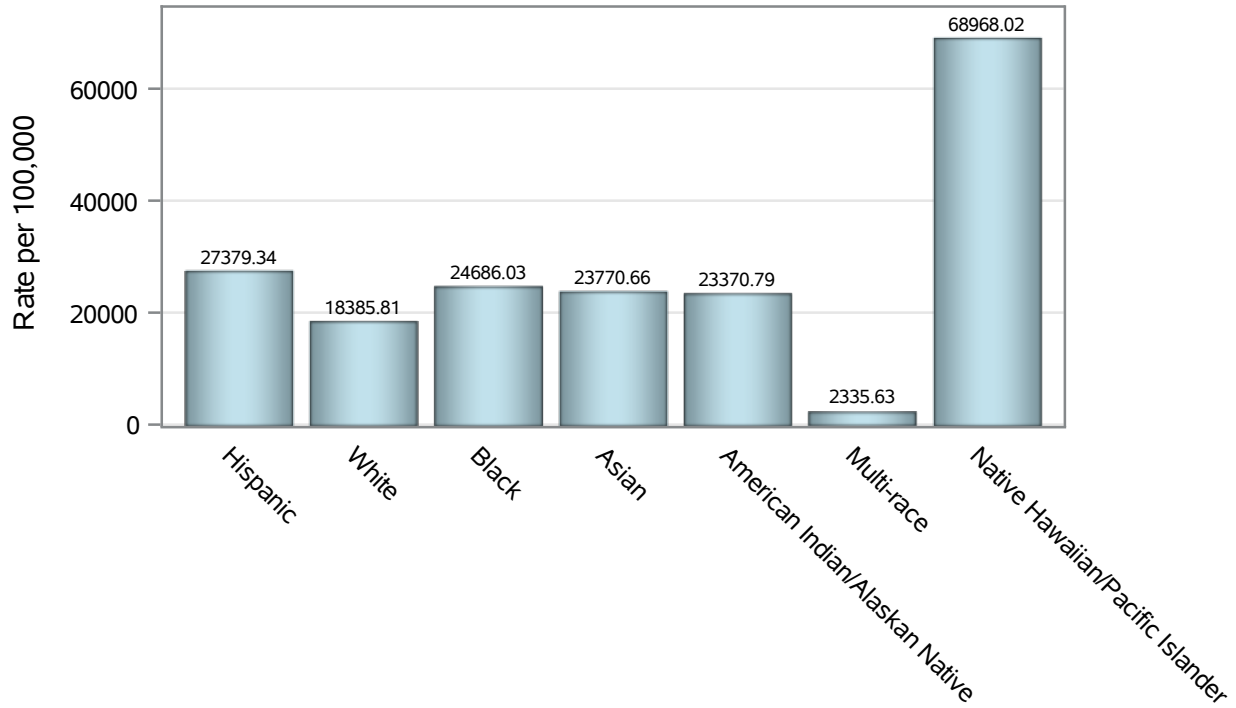
Note2: Rates for categories with fewer than 12 cases are suppressed due to high relative standard error.

Note3: Hospitalizations are regardless of deceased status; Deaths are regardless of hospitalization status

**Investigations are ongoing; data are subject to change.  
Reporting through 10APR2023**

**North Las Vegas zip codes include 89030, 89031, 89032, 89033, 89036, 89081, 89084, 89085, 89086, 89087.**

### Case Race/Ethnicity Rates in North Las Vegas

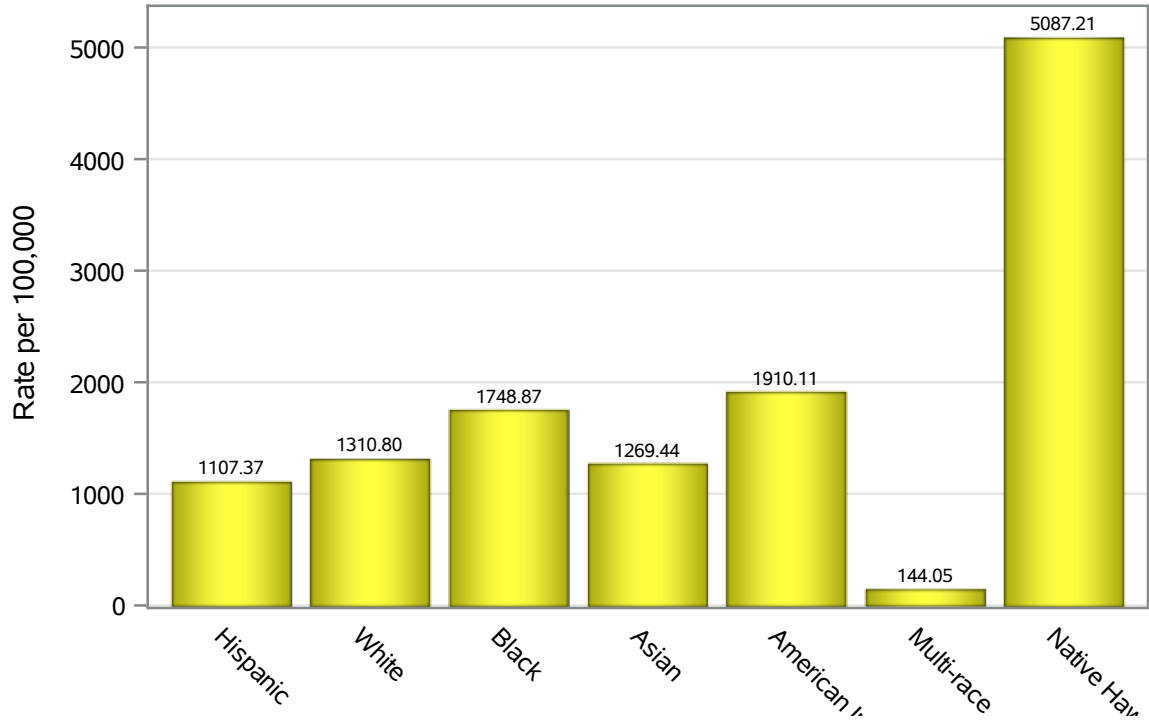


Investigations are ongoing; data are subject to change.

Reporting through 10APR2023

North Las Vegas zip codes include 89030, 89031, 89032, 89033, 89036, 89081, 89084, 89085, 89086, 89087.

### Hospitalization Race/Ethnicity Rates in North Las Vegas

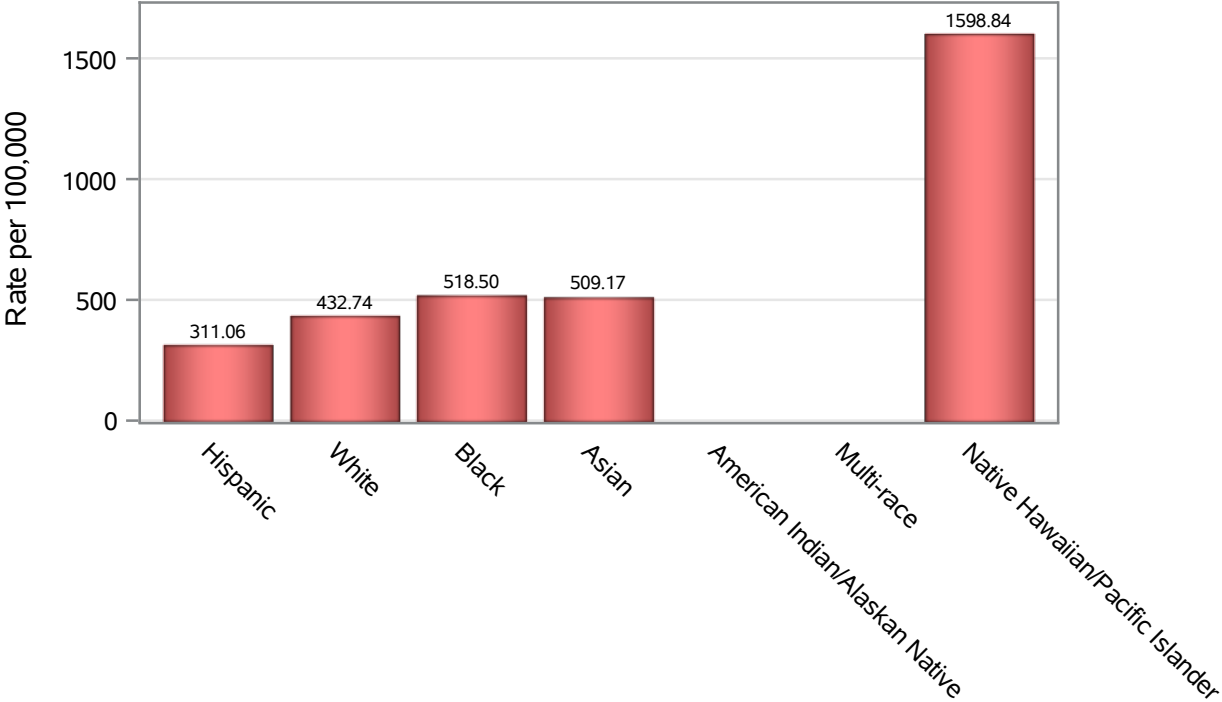


Investigations are ongoing; data are subject to change.

Reporting through 10APR2023

North Las Vegas zip codes include 89030, 89031, 89032, 89033, 89036, 89081, 89084, 89085, 89086, 89087.

### Death Race/Ethnicity Rates in North Las Vegas



Investigations are ongoing; data are subject to change.

Reporting through 10APR2023

North Las Vegas zip codes include 89030, 89031, 89032, 89033, 89036, 89081, 89084, 89085, 89086, 89087.

**Table 6: Race/Ethnicity and COVID19 in North Las Vegas**

Case Status	Race Ethnicity Categories	N	%	Population	Rate per 100,000
Cases	Hispanic	26406	38.8	96,445	27379
	White	11684	17.2	63,549	18386
	Black	11617	17.1	47,059	24686
	Asian	3408	5.0	14,337	23771
	American Indian/Alaskan Native	208	0.3	890	23371
	Multi-race	227	0.3	9,719	2335.6
	Native Hawaiian/Pacific Islander	949	1.4	1,376	68968
	Unknown	13517	19.9	.	.
Hospitalizations	Hispanic	1068	33.7	96,445	1107.4
	White	833	26.3	63,549	1310.8
	Black	823	26.0	47,059	1748.9
	Asian	182	5.7	14,337	1269.4
	American Indian/Alaskan Native	17	0.5	890	1910.1
	Multi-race	14	0.4	9,719	144.05
	Native Hawaiian/Pacific Islander	70	2.2	1,376	5087.2
	Unknown	164	5.2	.	.
Deaths	Hispanic	300	32.3	96,445	311.06
	White	275	29.6	63,549	432.74
	Black	244	26.3	47,059	518.50
	Asian	73	7.9	14,337	509.17
	American Indian/Alaskan Native	6	0.6	890	.
	Multi-race	8	0.9	9,719	.
	Native Hawaiian/Pacific Islander	22	2.4	1,376	1598.8

Note1: Population data source for calculating rate estimates: U.S. Census Bureau, ACS 5-year estimate.

Note2: Rates for categories with fewer than 12 cases are suppressed due to high relative standard error.

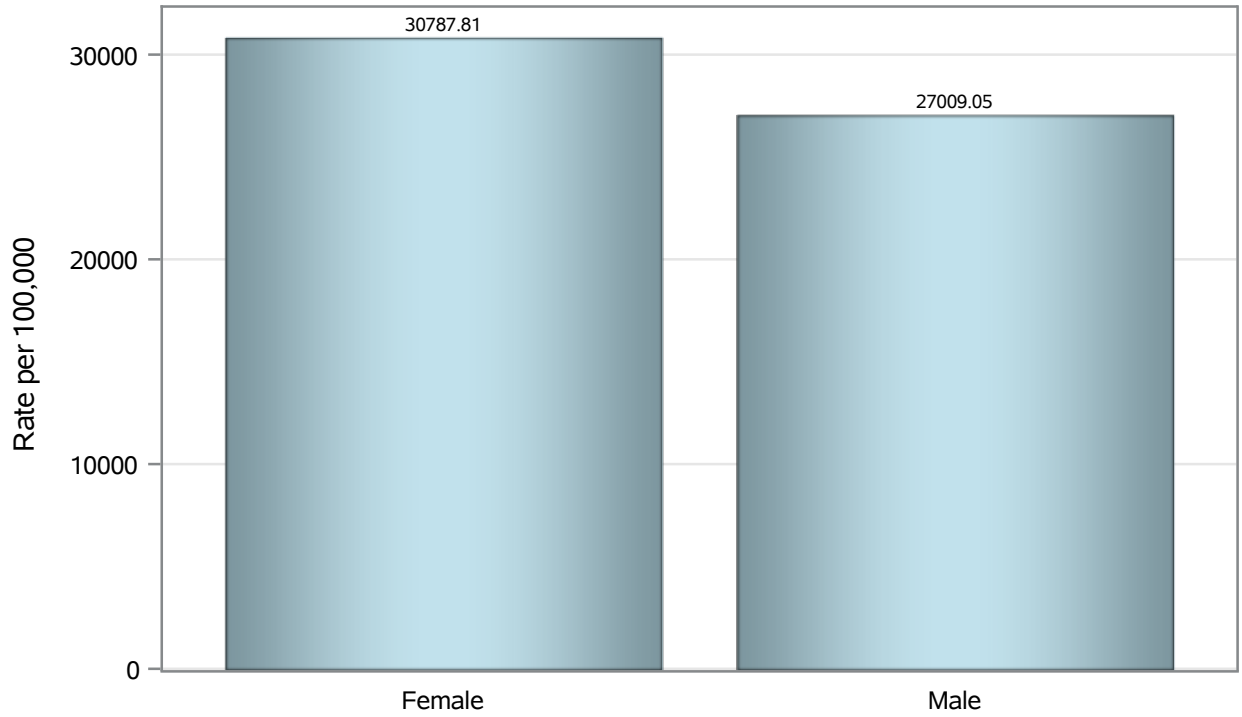
Note3: Hospitalizations are regardless of deceased status; Deaths are regardless of hospitalization status

**Investigations are ongoing; data are subject to change.  
Reporting through 10APR2023**

**North Las Vegas zip codes include 89030, 89031, 89032, 89033, 89036, 89081, 89084, 89085, 89086, 89087.**



### Case Birth Sex Rates in North Las Vegas

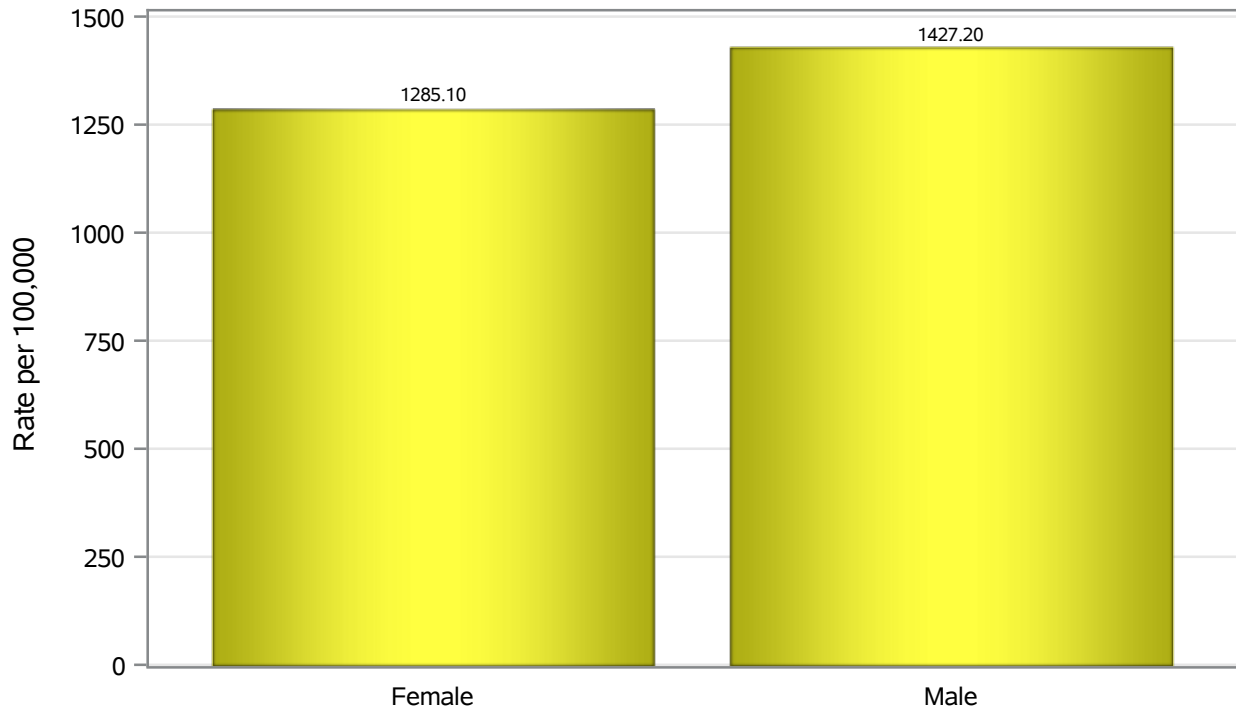


Investigations are ongoing; data are subject to change.

Reporting through 10APR2023

North Las Vegas zip codes include 89030, 89031, 89032, 89033, 89036, 89081, 89084, 89085, 89086, 89087.

### Hospitalization Birth Sex Rates in North Las Vegas

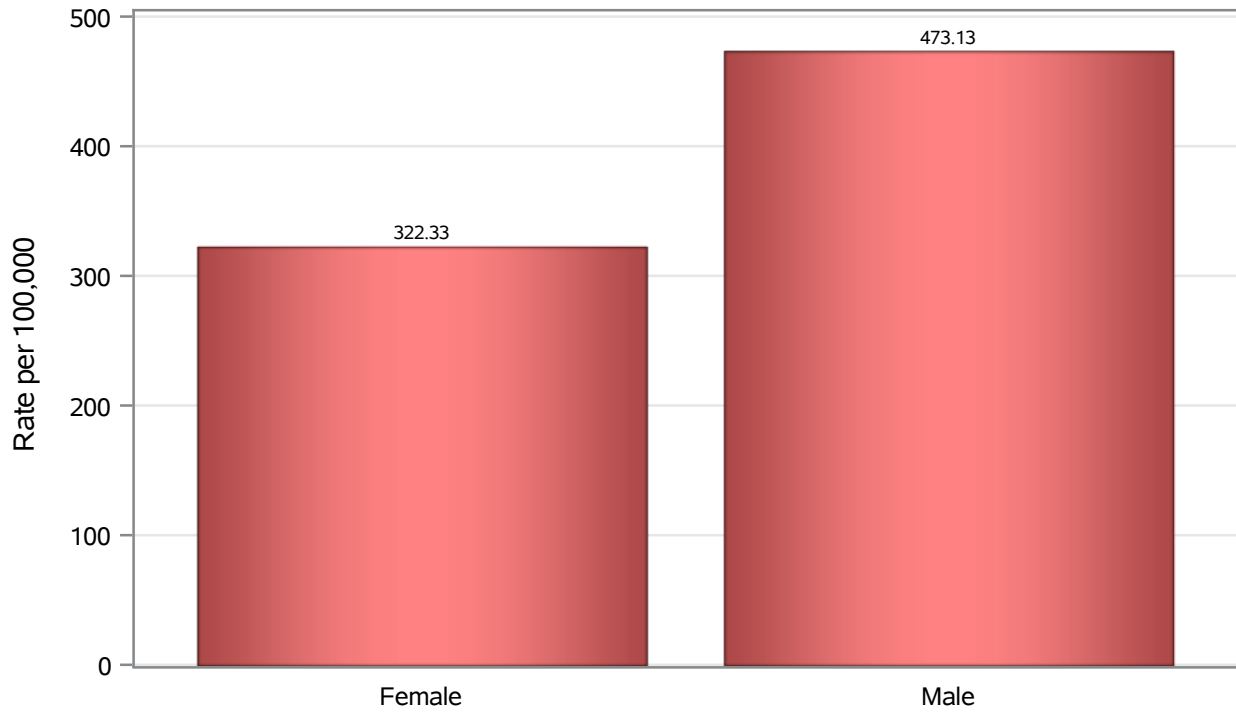


Investigations are ongoing; data are subject to change.

Reporting through 10APR2023

North Las Vegas zip codes include 89030, 89031, 89032, 89033, 89036, 89081, 89084, 89085, 89086, 89087.

### Death Birth Sex Rates in North Las Vegas



Investigations are ongoing; data are subject to change.

Reporting through 10APR2023

North Las Vegas zip codes include 89030, 89031, 89032, 89033, 89036, 89081, 89084, 89085, 89086, 89087.

**Table 7: Birth Sex and COVID19 in North Las Vegas**

Case Status	Birth Sex Categories	N	%	Population	Rate per 100,000
Cases	Female	36583	53.8	118823	30788
	Male	31055	45.7	114980	27009
	Unknown	378	0.6	.	.
Hospitalizations	Female	1527	48.2	118823	1285.1
	Male	1641	51.8	114980	1427.2
	Unknown	3	0.1	.	.
Deaths	Female	383	41.3	118823	322.33
	Male	544	58.6	114980	473.13
	Unknown	1	0.1	.	.

Note1: Population data source for calculating rate estimates: U.S. Census Bureau, ACS 5-year estimate.

Note2: Rates for categories with fewer than 12 cases are suppressed due to high relative standard error.

Note3: Hospitalizations are regardless of deceased status; Deaths are regardless of hospitalization status

**Investigations are ongoing; data are subject to change.  
Reporting through 10APR2023**

**North Las Vegas zip codes include 89030, 89031, 89032, 89033, 89036, 89081, 89084, 89085, 89086, 89087.**