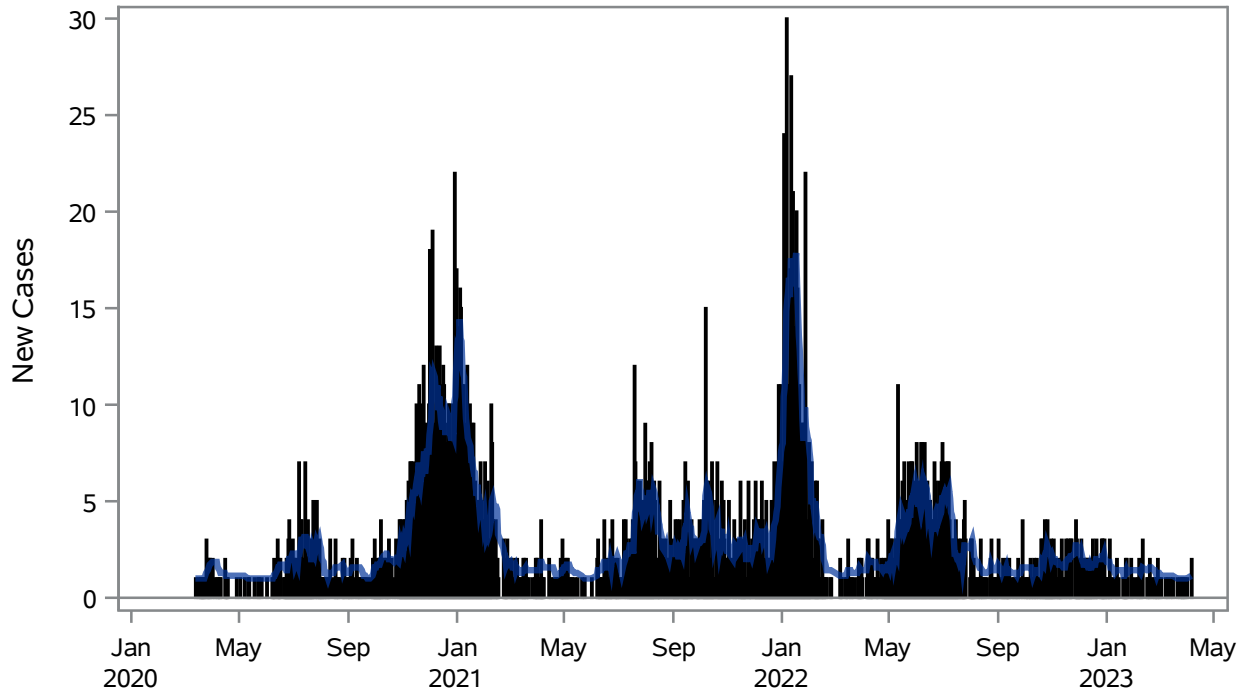


COVID19 Cases for Boulder City, 7-Day Moving Average



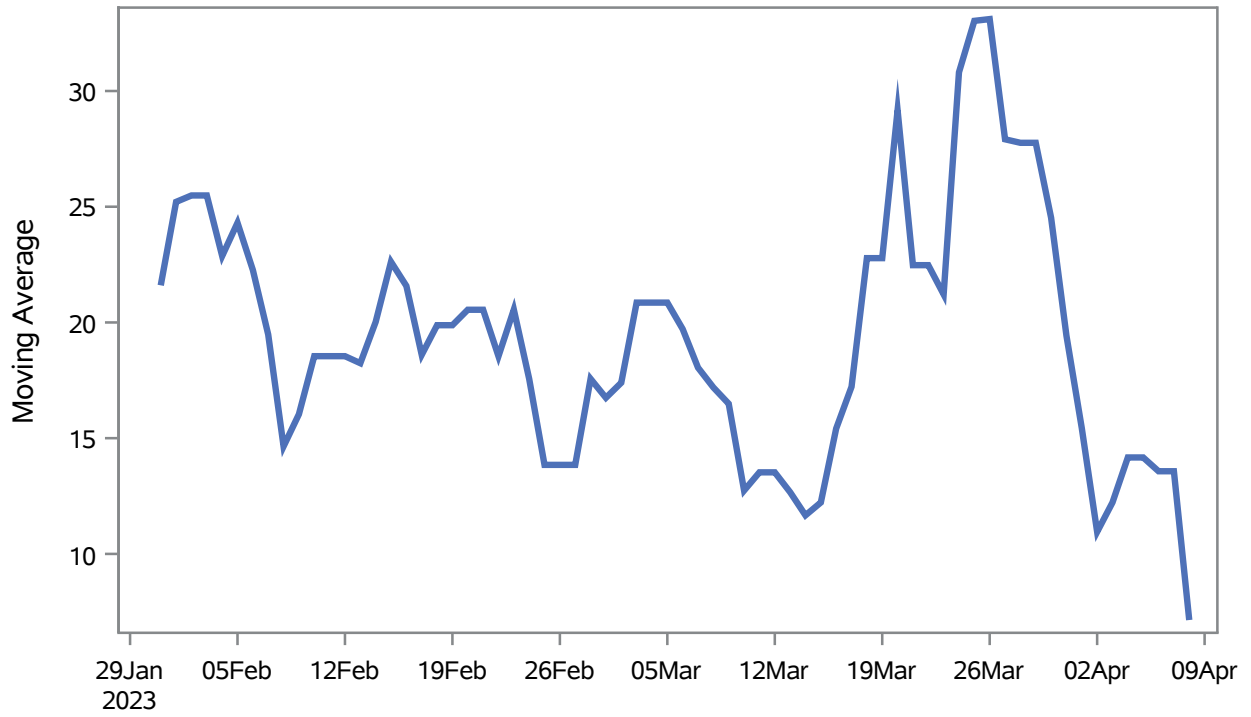
■ New Cases — 7-Day Moving Average

Investigations are ongoing; data are subject to change.

Reporting through 10APR2023

Boulder City zip codes include 89005.

Percent of People Receiving COVID-19 Viral Tests Who Have Positive Results in Boulder City



Investigations are ongoing; data are subject to change.

Reporting through 10APR2023

Boulder City zip codes include 89005.

Table 1: Age and COVID19 in Boulder City

Case Status	Age Categories	N	%	Population	Rate per 100,000
Cases	Aged 4 or less	38	1.4	659	5766.3
	Aged 5 to 17	248	9.1	2,123	11682
	Aged 18 to 24	203	7.4	921	22041
	Aged 25 to 49	841	30.8	3,509	23967
	Aged 50 to 64	692	25.3	3,701	18698
	Aged 64+	710	26.0	4,767	14894
Hospitalizations	Aged 18 to 24	4	2.2	921	--
	Aged 25 to 49	12	6.5	3,509	341.98
	Aged 50 to 64	43	23.1	3,701	1161.8
	Aged 64+	127	68.3	4,767	2664.1
Deaths	Aged 25 to 49	1	0.9	3,509	--
	Aged 50 to 64	16	14.2	3,701	432.32
	Aged 64+	96	85.0	4,767	2013.8

Note1: Population data source for calculating rate estimates: U.S. Census Bureau, ACS 5-year estimate.

Note2: Rates for categories with fewer than 12 cases are suppressed due to high relative standard error.

Note3: Hospitalizations are regardless of deceased status; Deaths are regardless of hospitalization status

**Investigations are ongoing; data are subject to change.
Reporting through 10APR2023
Boulder City zip codes include 89005.**

Table 2: Race/Ethnicity and COVID19 in Boulder City

Case Status	Race Ethnicity Categories	N	%	Population	Rate per 100,000
Cases	Hispanic	185	6.8	1,164	15893
	White	1762	64.5	13,569	12985
	Black	--	--	51	76471
	Asian	--	--	199	17085
	American Indian/Alaskan Native	--	--	140	11429
	Multi-race	1	0.0	525	--
	Native Hawaiian/Pacific Islander	--	--	32	--
	Unknown	686	25.1	.	.
Hospitalizations	Hispanic	12	6.5	1,164	1030.9
	White	151	81.2	13,569	1112.8
	Black	--	--	51	--
	Asian	--	--	199	--
	American Indian/Alaskan Native	--	--	140	--
	Unknown	15	8.1	.	.
	Deaths	Hispanic	4	3.5	1,164
	White	105	92.9	13,569	773.82
	Black	--	--	51	--
	Asian	--	--	199	--

Note1: Population data source for calculating rate estimates: U.S. Census Bureau, ACS 5-year estimate.

Note2: Rates for categories with fewer than 12 cases are suppressed due to high relative standard error. Counts for categories with population less than 500 are suppressed for confidentiality.

Note3: Due to suppression, the total counts per case status may not equal expected totals.

Note4: Hospitalizations are regardless of deceased status; Deaths are regardless of hospitalization status

**Investigations are ongoing; data are subject to change.
Reporting through 10APR2023
Boulder City zip codes include 89005.**