

# Using EBRs/EDRS in Chrome

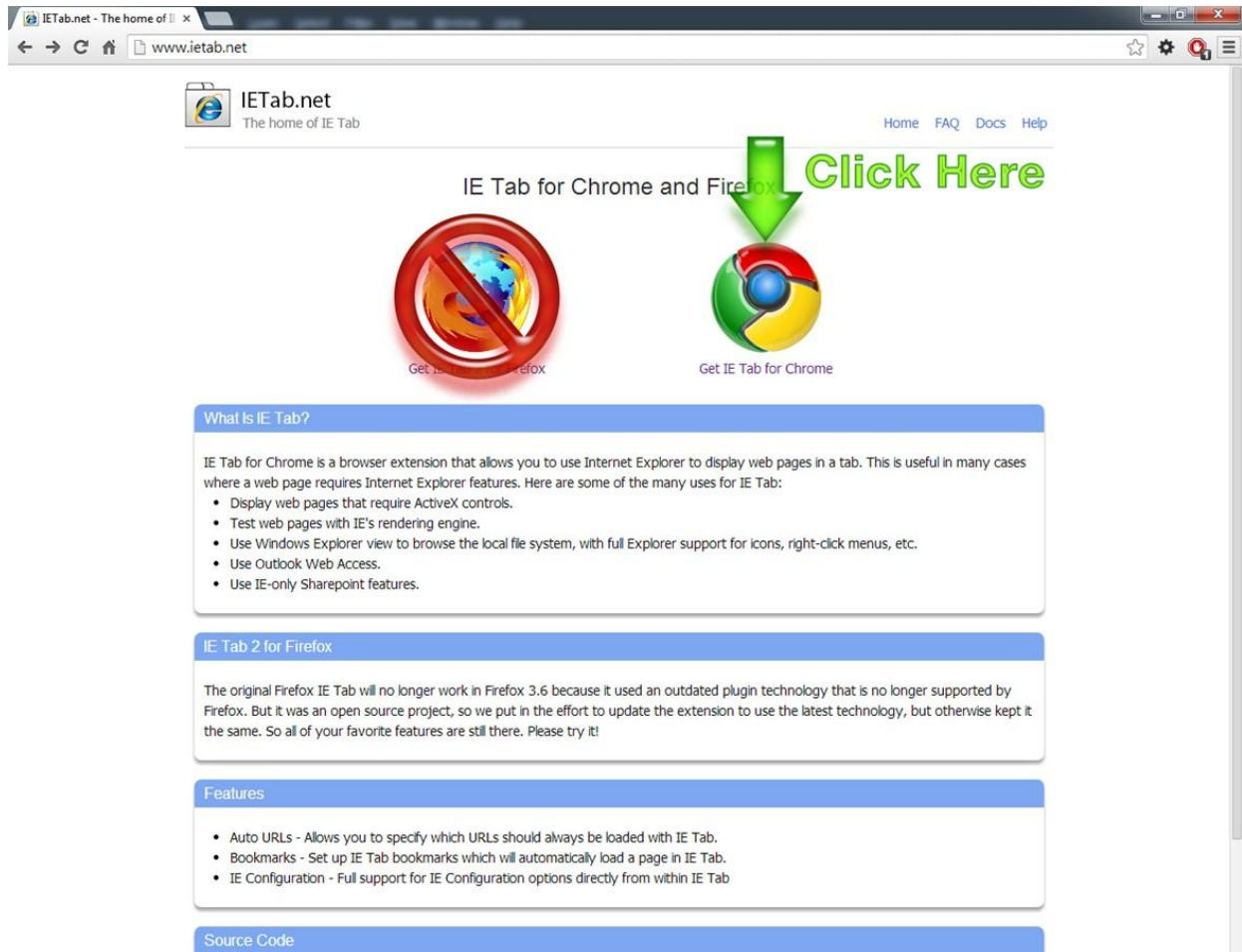
In order to use Chrome or Firefox with EBRs/EDRS, an extension or add-on is required to make this work. Steps to do so are mostly the same with minor differences. The following guide will show you how to set up the browser you are using.

## Either Browser

1. Go to the [IETab.net](http://IETab.net) website.
2. Jump down to either the [Chrome](#) or [Firefox](#) section, depending on your browser.

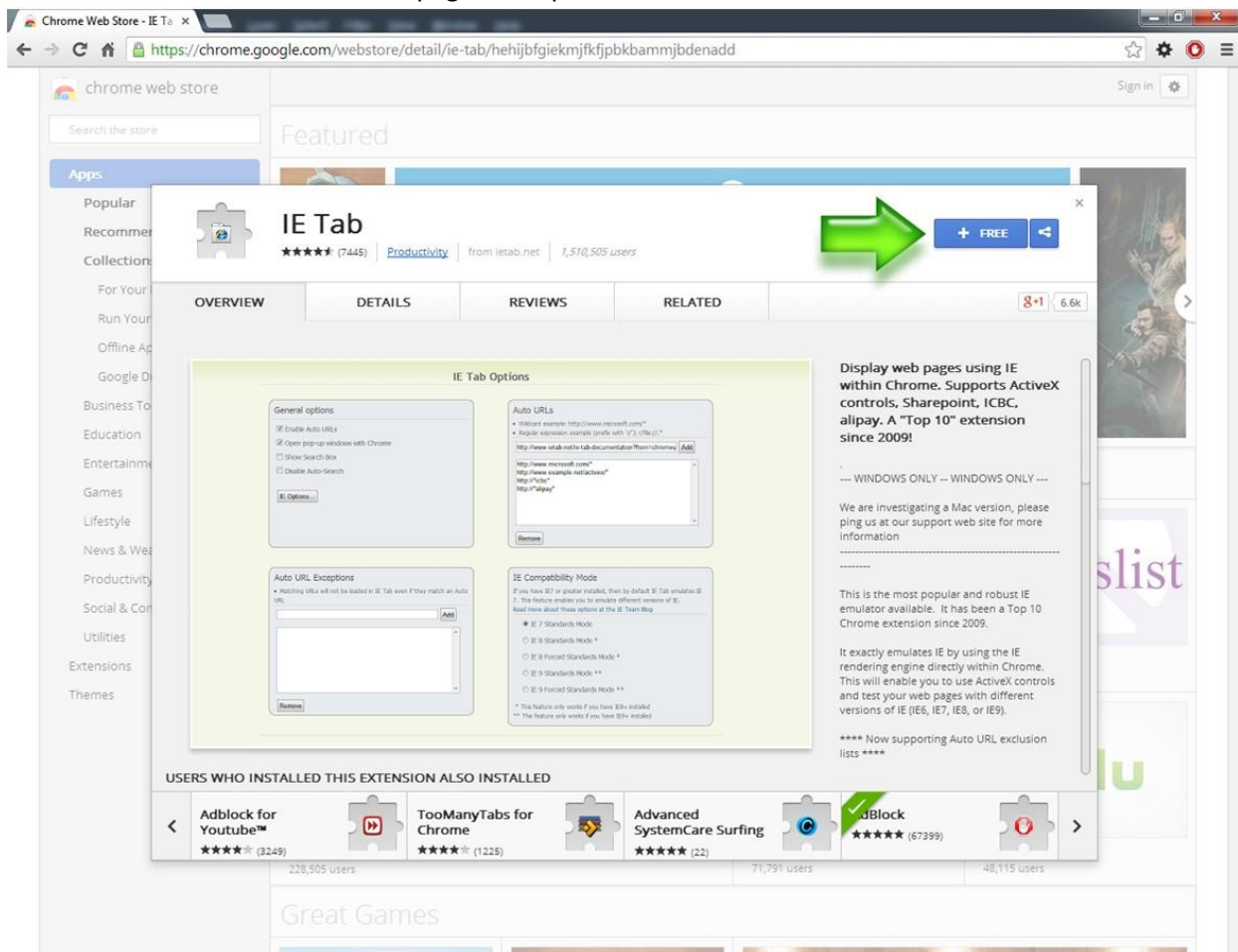
## Chrome

3. Click the Chrome logo.

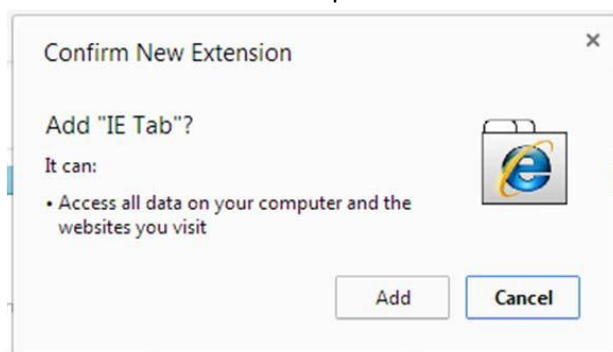


# Using EBRs/EDRS in Chrome

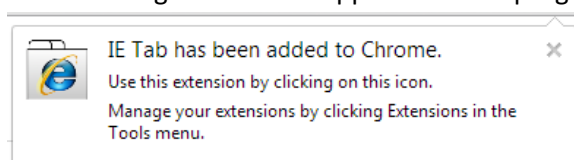
4. Click the **+ FREE** button on the page that opens.



5. Click **Add** on this box that opens:

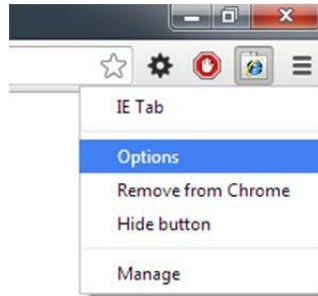


6. The following window will appear at the top-right of your browser:

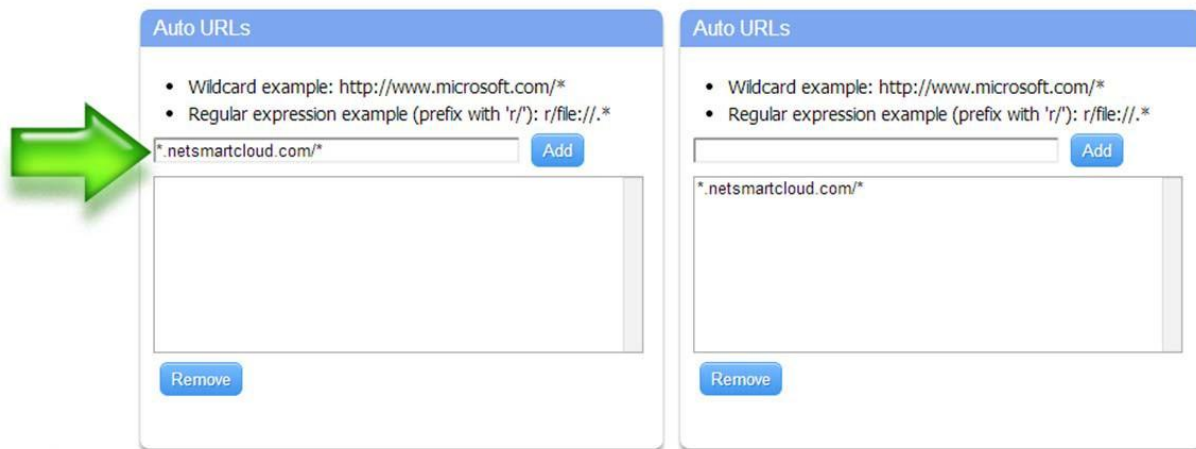


## Using EBRs/EDRS in Chrome

7. Right-click the new IE Tab icon in the top-right section of Chrome, and select **Options**.



8. In the new **IE Tab Options** window, add the text **\*.netsmartcloud.com/\*** to the box under **Auto URLs**. Click the blue **Add** button, it will move to the bottom list.

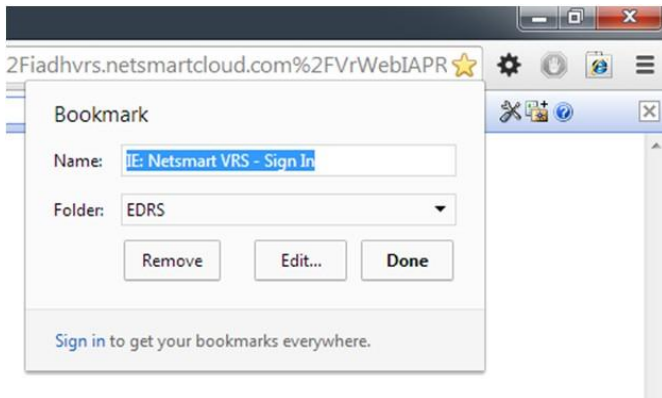


9. Go to the [EBRS/EDRS website](https://iadhvrs.netsmartcloud.com/Vr/VrWebIAPROD/Login.aspx?ReturnUrl=%2fvrwebiaproduct). It *should* look like this (note the extra address bar in blue):



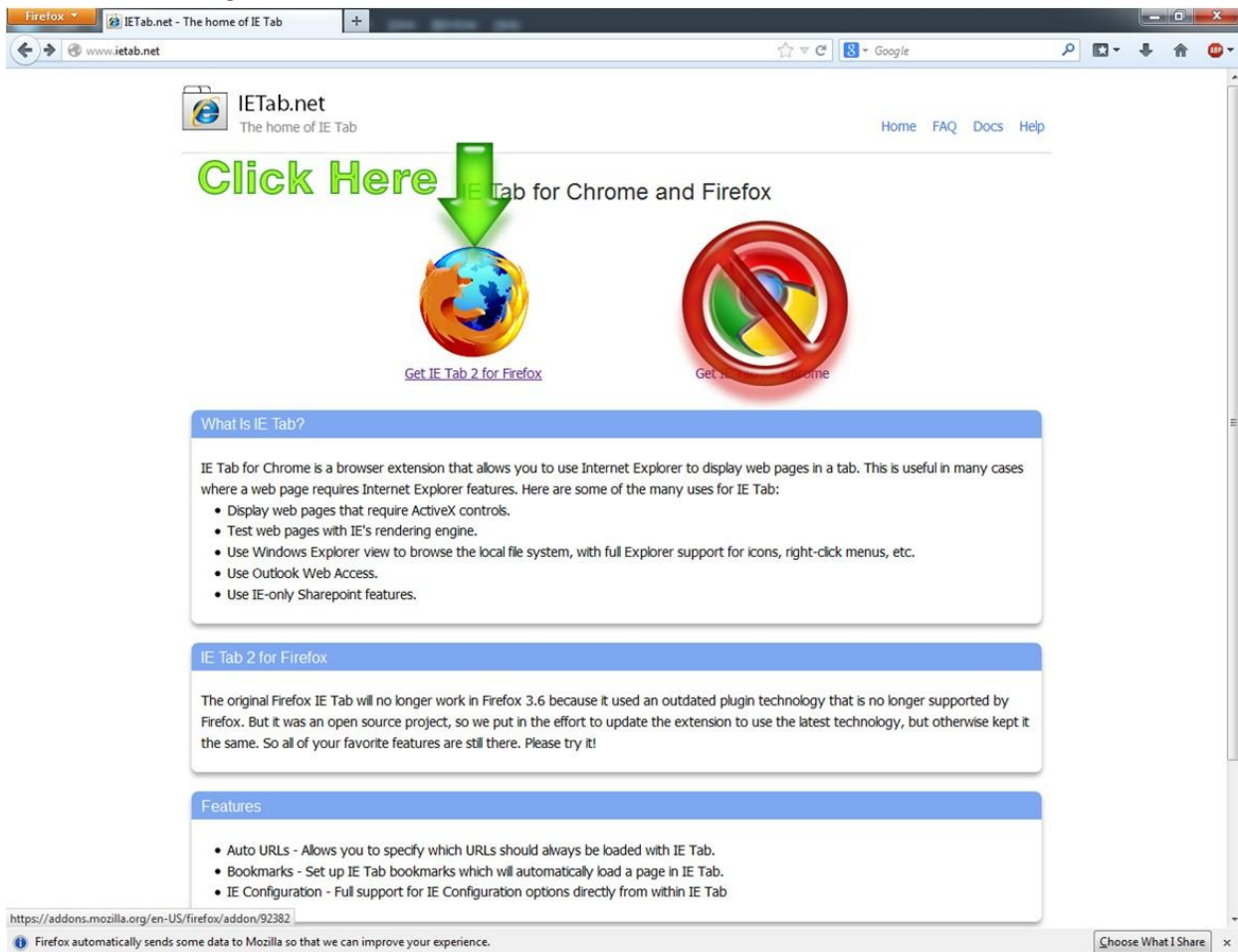
# Using EBRs/EDRS in Chrome

10. Bookmark the page by clicking on the star.



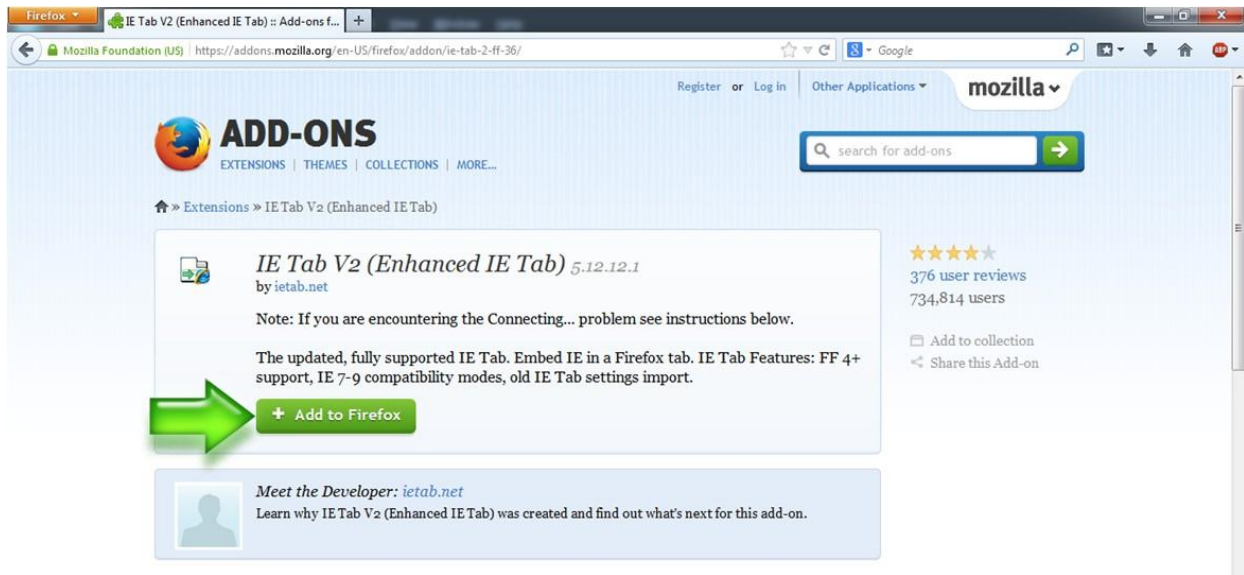
## Firefox

1. Click the Firefox logo.

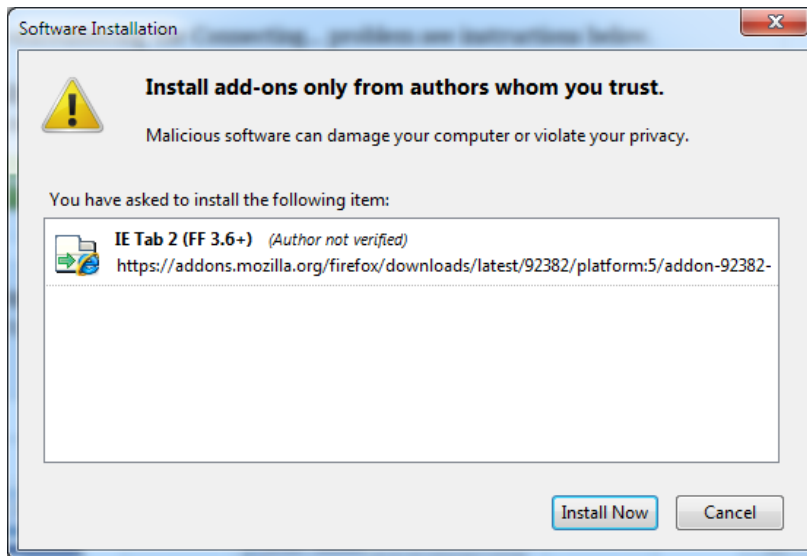


## Using EBRs/EDRS in Chrome

2. Click the  button.

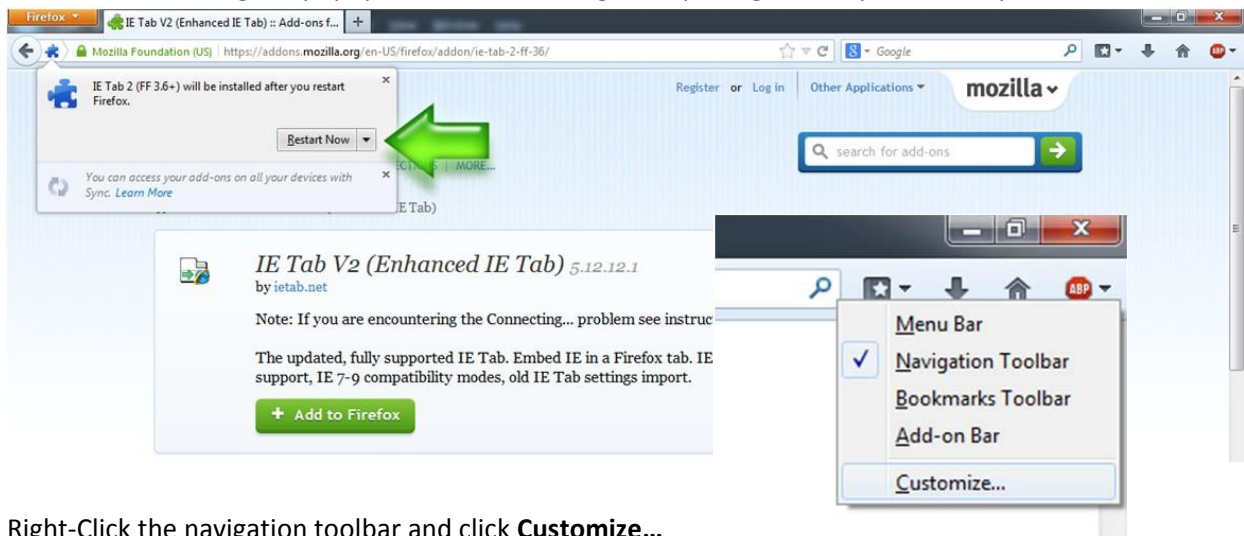


3. Click the **Install Now** button on this window:



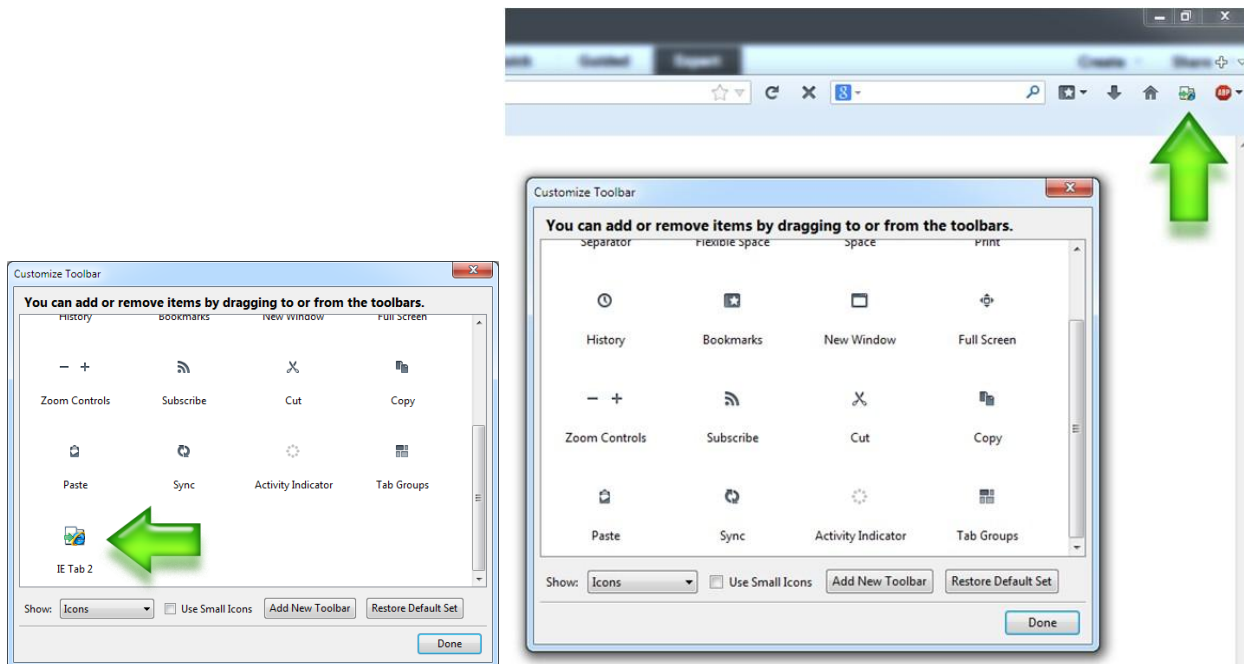
## Using EBRs/EDRS in Chrome

4. Restart Firefox using the popup window (or closing and opening it from your desktop).



5. Right-Click the navigation toolbar and click **Customize...**

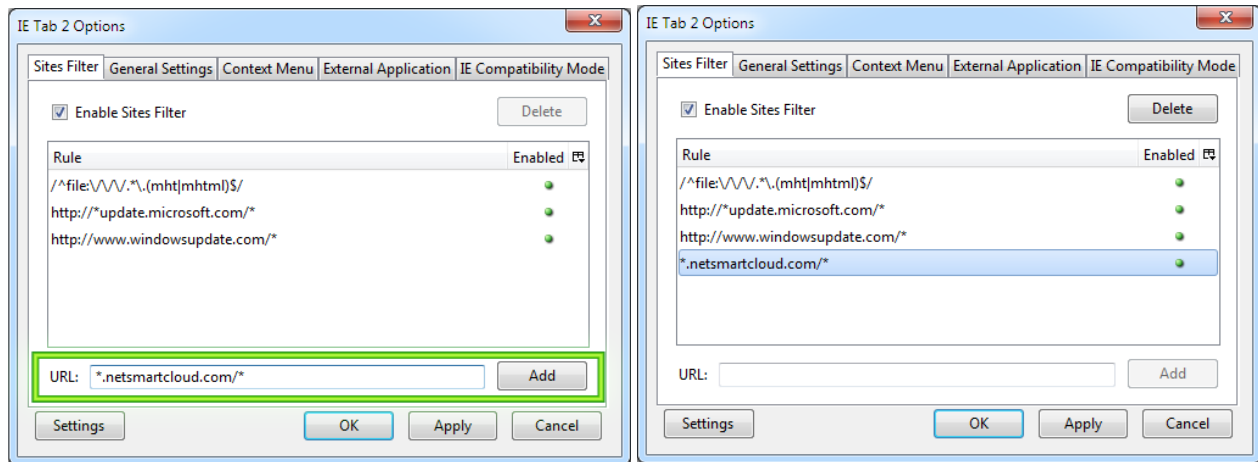
6. On the **Customize Toolbar** window that opens, drag the *IE Tab 2* icon from the window up to your Navigation Toolbar on the right.





## Using EBRS/EDRS in Chrome

7. Right-Click the new icon you just put in the Navigation Toolbar. A new window opens; in the **URL** box at the bottom, enter **\*.netsmartcloud.com/\*** and click the **Add** button. It will move to the top window.



- Go to the [EBRS/EDRS website](#). The way to tell if it loaded correctly using IE Tab is the little icon by the Back button that looks like a LEGO® brick.



## Using EBRs/EDRS in Chrome or Firefox

9. Click the Bookmark button, and click **Bookmark This Page**; pick a folder where you want it.

