

- ◆ World TB Day – Partnership for TB Elimination

## World TB Day – March 24 – Partnership for TB Elimination

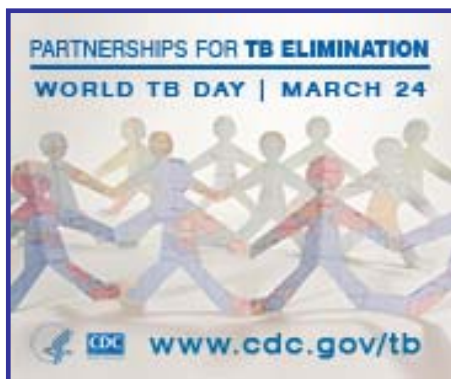


**World TB Day** is March 24, 2008. This annual event commemorates Dr. Robert Koch's announcement of the discovery of *Mycobacterium Tuberculosis* (M.tb), the bacteria that causes

tuberculosis (TB). At the time of his discovery, one out of every 7 persons living in the United States and Europe died of tuberculosis.

In 2006, the incidence rate of TB in the United States was 4.6 cases per 100,000 population, which did not meet the Healthy People 2010 objective (1.0 case per 100,000 population). Although the TB mortality rate was low (0.2 deaths per 100,000 population in 2005)<sup>i</sup>, this ancient scourge remains a leading cause of mortality around the world.

**World TB Day** provides a valuable opportunity to increase awareness about the presence of TB in the world, its health and economic consequences, and what is needed for its control and eventual elimination.



The Centers for Disease Control and Prevention (CDC) theme for 2008 World TB Day focuses on building and strengthening partnerships to meet the goal of TB elimination. The United States will not be able to maintain the current level of control without strengthened collaborations with local, state, national and international partners from all sectors of our society. National and global partnerships are increasingly taking actions to prevent further spread of TB and to reduce the overall burden of the disease.

Washoe County is fortunate to have a low incidence of tuberculosis. But we, too, need the collaborative efforts of all members of our community to maintain control and eventually eliminate TB.

### COLLABORATIVE EFFORTS

#### Screen

Test persons who are at risk for infection with M.tb and who are at risk for progression to active TB.

#### Risk of Infection

- ◆ **Contacts to infectious TB cases**
- ◆ **Children under 5 years**
- ◆ **Persons who lived or traveled in TB endemic countries**
- ◆ **Health care workers**
- ◆ **Congregate living staff and residents**
- ◆ **Medically underserved/low income**

<sup>i</sup> CDC. *Reported Tuberculosis in the United States, 2006*. Atlanta, GA: U.S. Department of Health and Human Services, CDC, September 2007.

### Risk of Progression

- ◆ Medical conditions that weaken the immune system
- ◆ Treatments that weaken the immune system
- ◆ Recent TB infection
- ◆ Persons with abnormal CXR consistent with previous untreated/under-treated TB disease

### **Treat**

Offer and encourage treatment for latent tuberculosis infection to those most at risk for progression to active TB.

### **Use Directly Observed Therapy (DOT)**

DOT is recommended by CDC and the American Thoracic Society (ATS) for **all** persons with active TB disease (pulmonary and extra-pulmonary) and persons with latent TB infection (LTBI) at greatest risk for progression to active TB (Children  $\leq$  5 years who are known contacts to active TB, immunocompromised persons at risk for non-adherence).

### **Report**

Reporting suspect and confirmed tuberculosis disease is a vital collaborative effort. Prompt reporting allows for prompt initiation of investigation to identify those at greatest risk for infection and progression to active TB. Vulnerable contacts include children less than 5 years of age, and immunocompromised individuals. Effective and complete treatment can be ensured for the case and infected contacts.

### **Report a suspect or confirmed TB case to:**

#### **Washoe County District Health Department Communicable Disease Program**

- **24 Hour Telephone: (775) 328-2447**
- **Confidential Fax Line: (775) 328-3764**

To obtain a Confidential Case Report form visit:  
[www.washoecounty.us/health/cdpp/reporting.html](http://www.washoecounty.us/health/cdpp/reporting.html)

## QUICK STATISTICS

### Reported Active TB cases in 2006

Area	No. Cases	Incidence Rate (Cases per 100,000 Population)
Washoe	11	2.7
Nevada	101	3.9
US	13,779	4.6
World	8,800,000*	136*

\* In 2005. A WHO / The Union monograph on TB and tobacco control: joining efforts to control two related global epidemics.

<http://www.who.int/tb/publications/2008/en/index.html>

## ADDITIONAL RESOURCES

- ◆ **Online presentations and resources:**  
[www.nationaltbcenter.edu](http://www.nationaltbcenter.edu)
- ◆ **TB literature and patient education:**  
[www.findtbresources.org](http://www.findtbresources.org)  
[www.stoptb.org](http://www.stoptb.org)
- ◆ **Guidelines, fact sheets, and statistics:**  
[www.cdc.gov/tb](http://www.cdc.gov/tb)  
[www.who.int/tb/en/](http://www.who.int/tb/en/)
- ◆ **Local information:**  
**Washoe County District Health Department  
TB Clinic**  
**Phone: (775) 785-4785**  
[www.washoecounty.us/health](http://www.washoecounty.us/health)

