

Overview

About PEWSS

For the week ending Jan. 23, 2016, the following pathogens were detected with a very low level of testing: Coronavirus NL63, Human metapneumovirus, M. pneumoniae, RSV, Rhinovirus/Enterovirus.

For additional information about PEWSS, please contact the SNHD Office of Epidemiology at 702.759.1299. PEWSS program description, methodology, and weekly bulletins can be viewed at <http://www.southernnevadahealthdistrict.org/stats-reports/influenza.php>

Table 1. Current Testing results

Testing Category	Last Week	Four Weeks	Comment
Adenovirus	—	Sporadic	
Chlamydomphila pneumoniae	—	—	Not detected in 3 months (since Oct 10, 2015)
Coronavirus HKU1	—	Sporadic	
Coronavirus NL63	Detected	High	
Coronavirus 229E	—	—	Not detected in 10 months (since Mar 14, 2015)
Coronavirus OC43	—	Sporadic	
Human metapneumovirus	Detected	Moderate	
Influenza A	—	Sporadic	Strains detected: H1N1: 5 (100%)
Influenza B	—	—	Has not been detected in the 2015-2016 influenza surveillance season
Mycoplasma pneumoniae	Detected	Sporadic	
Parainfluenza 1	—	Sporadic	
Parainfluenza 2	—	—	Not detected in 11 months (since Feb 21, 2015)
Parainfluenza 3	—	—	Not detected in 6 months (since Aug 8, 2015)
Parainfluenza 4	—	—	Not detected in 8 weeks (since Nov 28, 2015)
Respiratory syncytial virus (RSV)	Detected	Moderate	
Rhinovirus/Enterovirus	Detected	Very low	
Specimen Volume	Very low	Low	

— Zero positives * None tested

Figure 1. Weekly number of specimens tested

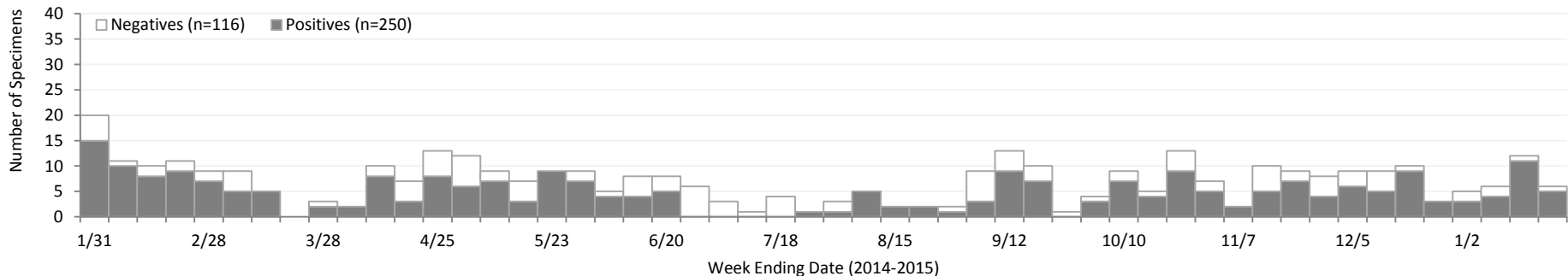


Figure 2. Weekly positive counts for organisms identified

