

Southern Nevada Weekly Influenza Surveillance Snapshot MMWR Week of May 7, 2017 to May 13, 2017

Summary: Influenza surveillance in Southern Nevada for the 2016/2017 season recorded an expected increase in cases up to a peak during week 2 and 3 of 2017. A subsequent gradual decrease was then noted through week 5 followed a sharp increase in week 6 then a significant decrease for the past 13 weeks. The total number of confirmed cases was 624 as of May 13, 2017. Compared to the previous season, there was a 1.7% decrease in cases. Influenza A is the dominant type circulating locally (81.9%). Influenza B accounted for approximately 17.9%. No influenza-associated pediatric death occurred this season. SNHD has continued to update the public on the progression of the season and has encouraged the population to get vaccinated.

Table 1: Influenza Report by Age Group, Clark County, NV (MMWR Week 40, 2016 to Week 19, 2017)

Age Group	Deaths	*Hosp.	Cases
0-4	0	39	101
05-24	0	42	130
25-49	1	66	88
50-64	1	85	101
65+	7	187	204
Total	9	419	624

*Hosp.= Hospitalizations

Figure 1: Weekly Variation of Influenza Cases by Test Type
(*RIDTs:Rapid Influenza Diagnosis Test **Confirmed by: PCR, Culture, Immunofluorescent DFA staining)

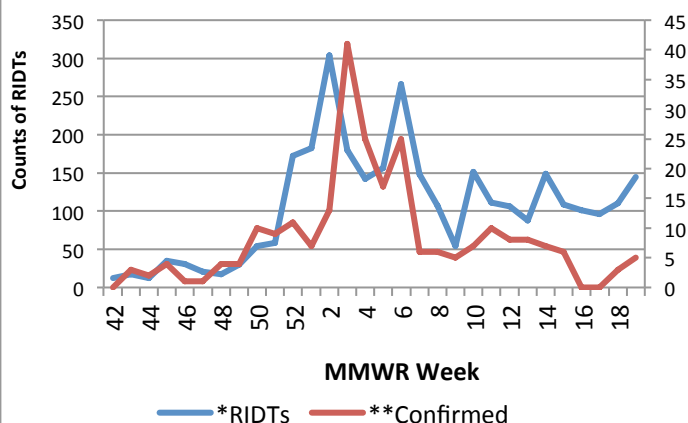


Figure 2: Distribution of Cases by Virus Strain

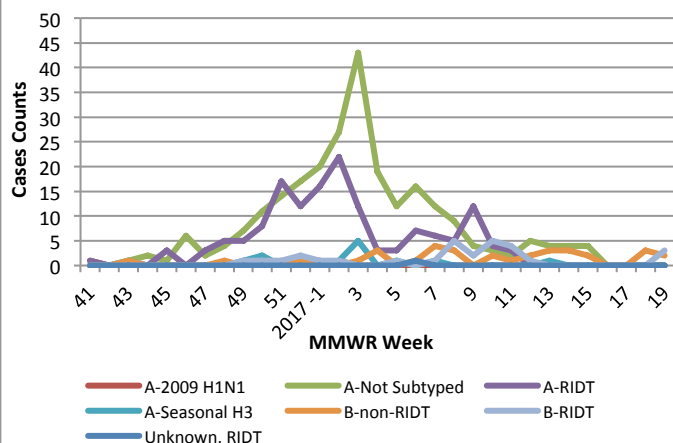


Table 2: Influenza Report by virus strain (MMWR week 40, 2016 to Week 19, 2017)

Influenza Type	Deaths	Hospitalizations	Cases
Influenza A (2009 H1N1)	0	3	4
Influenza A (not sub-typed)	2	178	297
Influenza A (RIDT)	5	162	190
Influenza A (seasonal H3)	1	4	20
Influenza B (non-RIDT)	0	18	59
Influenza B (RIDT)	0	52	53
Influenza (unknown type, RIDT)	1	1	1
Total	9	419	624

Southern Nevada Weekly Influenza Surveillance Snapshot MMWR Week of May 7, 2017 to May 13, 2017

Figure 3: Weekly Influenza-Like Illness variation

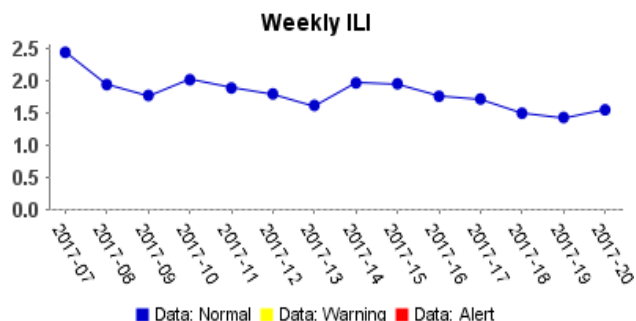


Figure 4: Seasonal Trends of Confirmed Cases of Influenza

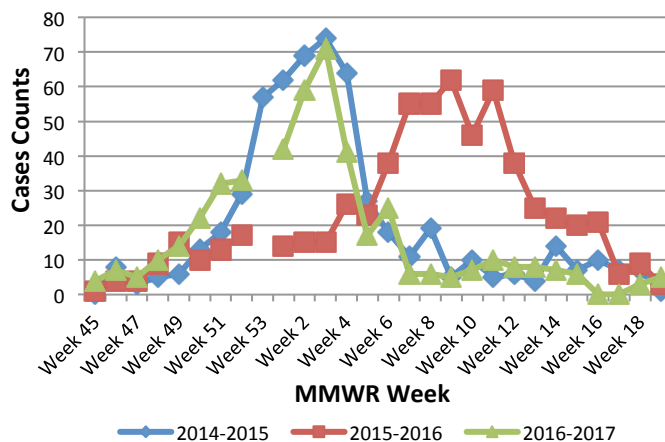


Table 3: Influenza Report by Condition Type, Clark County, NV (MMWR Week 40, 2016 to Week 19, 2017)

Condition	Deaths	*Hosp.	Cases
Influenza	9	419	624
Influenza A, Novel Virus	0	0	0
Influenza-associated death in person under 18	0	0	0
Total	9	419	624

*Hosp.=Hospitalizations

Figure 5: ILI Activity Level- 2016-17 Influenza Season Week 18 ending May 06, 2017

<https://gis.cdc.gov/grasp/fluview/main.html>

