



Southern Nevada Weekly Influenza Surveillance Snapshot MMWR Week of April 8, 2017 to April 15, 2017

Summary: Influenza surveillance in Southern Nevada for the 2016/2017 season recorded an expected increase in cases up to a peak during week 2 and 3 of 2017. A subsequent gradual decrease was then noted through week 5 followed by a sharp increase in week 6, and then a significant decrease afterwards. The total number of confirmed cases was 587 as of April 15, 2017. Compared to the previous season, there was a 1.5% decrease in overall confirmed cases. Influenza A is the dominant type circulating locally (~86%). Influenza B accounted for approximately 14%. No influenza-associated pediatric death occurred this season. SNHD has continued to update the public on the progression of the season and has encouraged the population to get vaccinated.

Table 1: Influenza Report by Age Group, Clark County, NV (MMWR Week 40, 2016 to Week 15, 2017)

Age Group	Deaths	*Hosp.	Cases
0-4	0	37	97
05-24	0	38	117
25-49	1	61	82
50-64	1	81	97
65+	7	178	194
Total	9	395	587

*Hosp.= Hospitalizations

Figure 1: Weekly Variation of Influenza Cases by Test Type (*RIDTs:Rapid Influenza Diagnosis Test **Confirmed by: PCR, Culture, Immunofluorescent DFA staining)

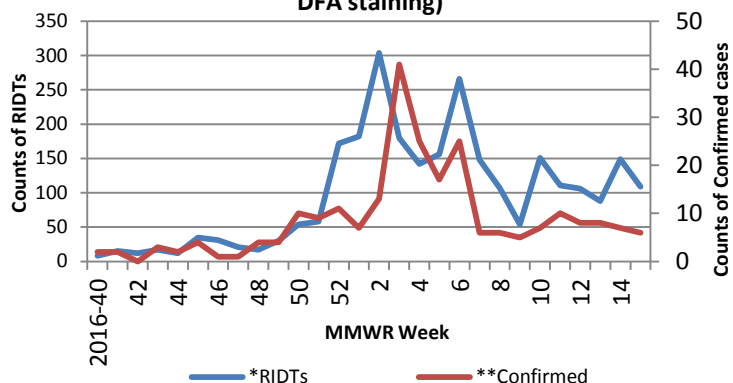


Figure 2: Distribution of Cases by Virus Strain

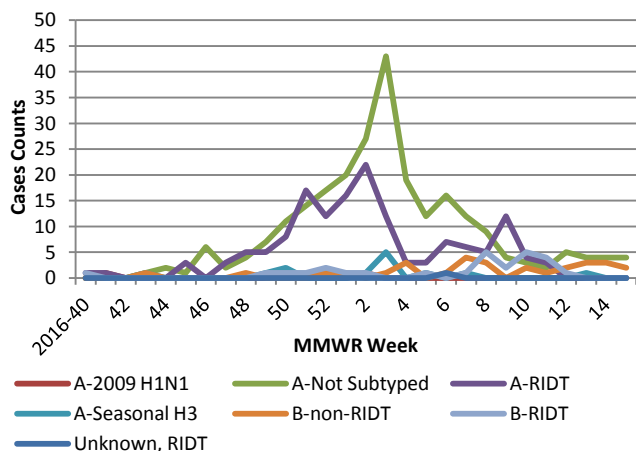


Table 2: Influenza Report by virus strain (MMWR week 40, 2016 to Week 15, 2017)

Influenza Type	Deaths	Hospitalizations	Cases
Influenza A (2009 H1N1)	0	3	4
Influenza A (not sub-typed)	2	176	295
Influenza A (RIDT)	5	159	186
Influenza A (seasonal H3)	1	4	20
Influenza B (non-RIDT)	0	13	41
Influenza B (RIDT)	0	39	40
Influenza (unknown type, RIDT)	1	1	1
Total	9	395	587

Southern Nevada Weekly Influenza Surveillance Snapshot MMWR Week of April 8, 2017 to April 15, 2017

Figure 3: Percentage of Visits for Influenza-Like Illness Weekly variation

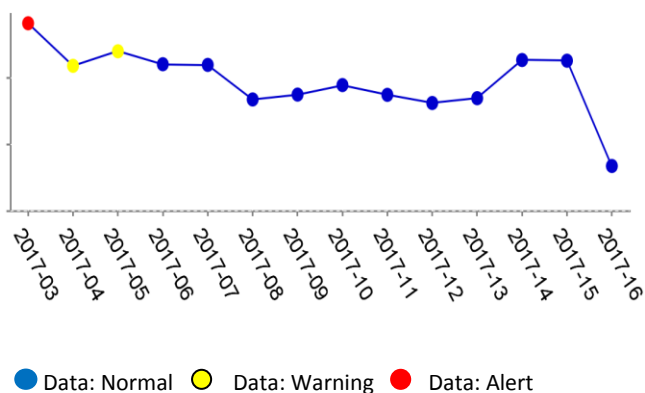


Figure 4: Seasonal Trends of Confirmed Cases of Influenza

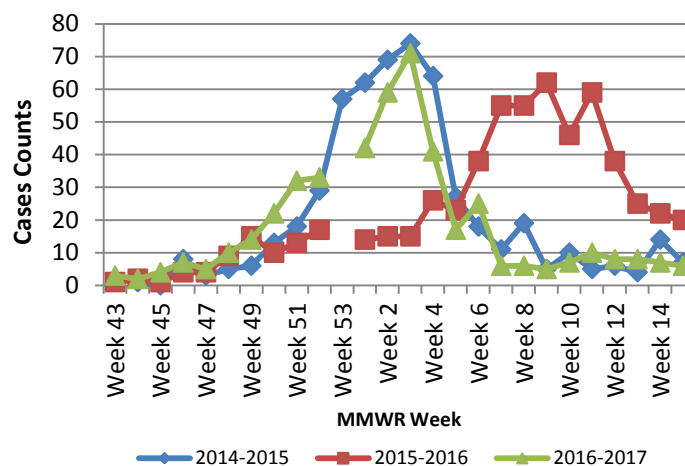


Table 3: Influenza Report by Condition Type, Clark County, NV (MMWR Week 40, 2016 to Week 15, 2017)

Condition	Deaths	*Hosp.	Cases
Influenza	9	395	587
Influenza A, Novel Virus	0	0	0
Influenza-associated death in person under 18	0	0	0
Total	9	395	587

*Hosp.=Hospitalizations

Figure 5: ILI Activity Level- 2016-17 Influenza Season Week 14 ending April 08, 2017
<https://gis.cdc.gov/grasp/fluview/main.html>

