



Southern Nevada Weekly Influenza Surveillance Snapshot CDC Week 11, March 11, 2018 to March 17, 2018

Summary:

Influenza surveillance for Clark County, Nevada includes data collected from 14 local hospital emergency rooms and 69 healthcare providers. During week 11, the influenza activity decreased in the United States and the state of Nevada. In Clark County, as of 3/17/2018, the total number of confirmed cases of influenza during the season was 1196 with 51% being age 65 and older, and the proportion of emergency room (ER) visits for Influenza-like Illness (ILI) decreased from 3.8% in week 10 to 3.7% in week 11. Approximately 50% of area ER visits for ILI were children under 18 years of age. Influenza B was the dominant type circulating in Week 11. Twenty-six influenza-associated deaths, including 3 deaths of children under age 18, occurred this season in Clark County. Southern Nevada Health District will continue to update the public on the progression of the season and encourage influenza vaccination for all persons 6 months of age and older.

Table 1: Influenza Report by Age Group, Clark County, NV (CDC Week 40, 2017 to Week 11, 2018)

Age Group	Deaths	Hospitalized	Confirmed Cases*
0-4	1	42	71
05-17	2	28	85
18-24	1	27	31
25-49	1	107	170
50-64	6	167	232
65+	15	514	607
Total	26	885	1196

Figure 1: Weekly Count of Reported Positive Influenza Tests by Test Type, Clark County, NV**

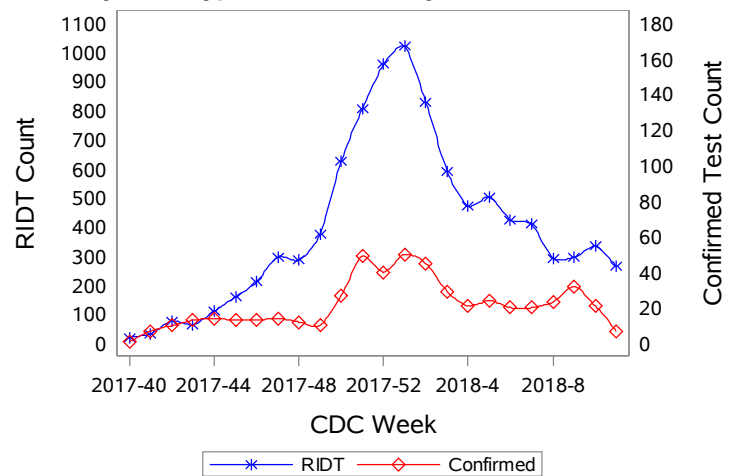


Table 2: Influenza Report by Virus Strain, Clark County, NV (CDC Week 40, 2017 to Week 11, 2018)

Influenza Type	Deaths	Hospitalized	Confirmed Cases*
A (2009 H1N1)	0	3	4
A (RIDT)	14	589	589
A (not sub-typed)	2	153	351
A (seasonal H3)	4	22	36
B (RIDT)	1	91	91
B (non-RIDT)	5	26	124
Total Confirmed Cases	26	885	1196

Figure 2: Distribution of Confirmed Cases* by Virus Strain, Clark County, NV

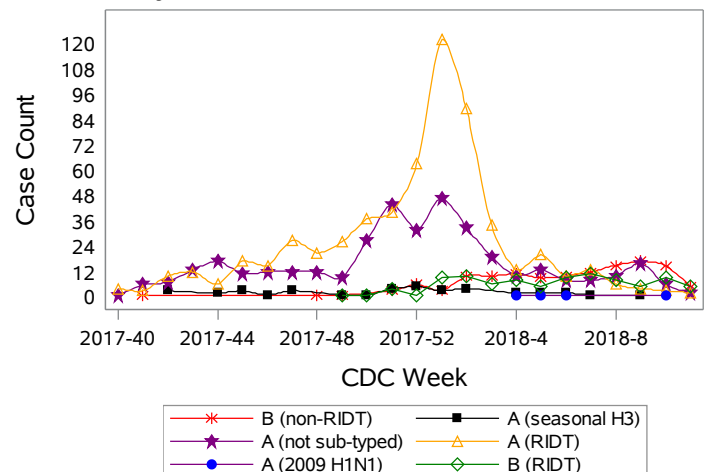


Figure 3: Weekly Percentage of Emergency Room Visits for Influenza-Like Illness, Clark County, NV

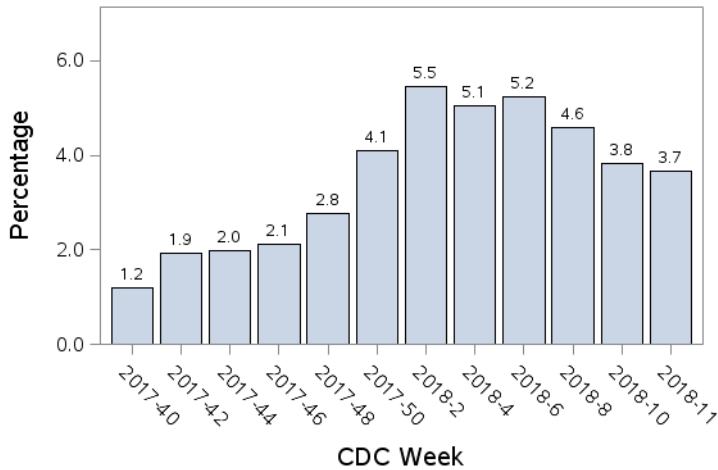


Figure 4: Age Distribution of Emergency Room Visits for Influenza-Like Illness, Clark County, NV

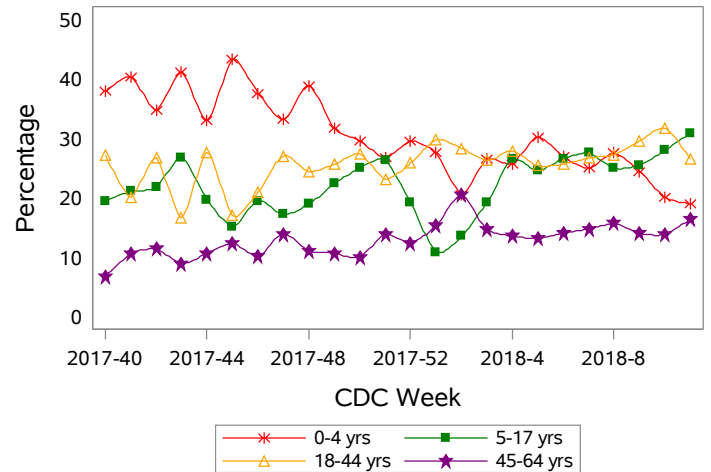


Figure 5: Seasonal Trends of Confirmed Cases of Influenza, Clark County, NV

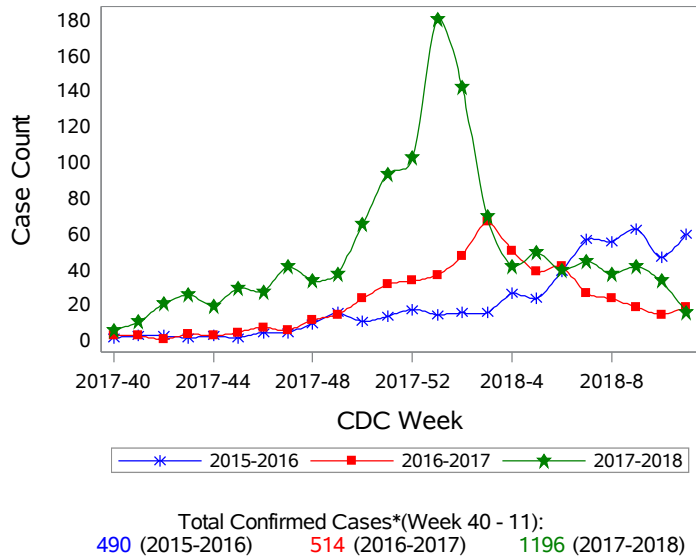
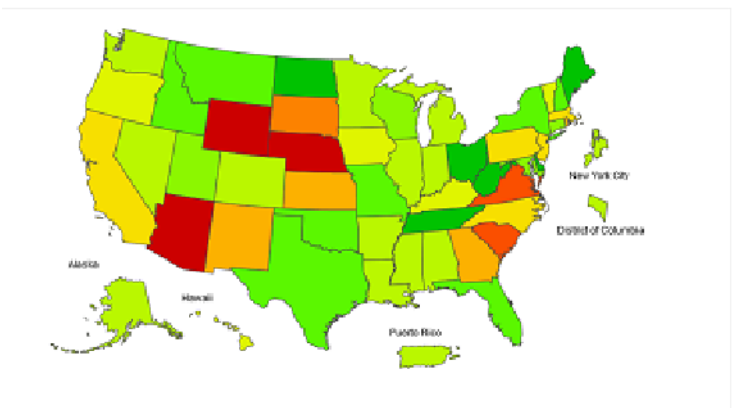


Figure 6: National ILI Activity Level- 2017-2018 Influenza Season CDC Week 11 ending March 17, 2018



*Confirmed Cases= Laboratory confirmed by PCR, culture, immunofluorescent DFA antigen staining, IHC staining, rapid influenza diagnostic tests (RIDTs) with hospitalizations for 24 hours or longer, or RIDTs with death.

**Test Type-RIDT: Rapid Influenza Diagnostic Test.

Test Type- Confirmed: PCR; Culture; Immunofluorescence, Direct (DFA) or Indirect (IFA) Florescent Antibody Staining; and Immunohistochemical (IHC)staining.

Note: The total number of confirmed cases presented in this report is subject to changes due to possible delays in reporting and processing.

For additional information regarding SNHD influenza surveillance, please visit us at

<http://southernnevadahealthdistrict.org/stats-reports/influenza-surveillance.php>.

Office of Epidemiology and Disease Surveillance (OEDS)
 Zuwen Qiu-Shultz, MPH, Epidemiologist