

## Southern Nevada Weekly Influenza Surveillance Snapshot CDC Week 1, December 31, 2017 – January 6, 2018

**Summary:** Influenza surveillance for Clark County, Nevada includes data collected from 16 local hospital emergency rooms and 58 healthcare providers. During week 1, the influenza activity increased sharply in the United States and Nevada was one of twenty-six states experienced high influenza-like illness (ILI) activity. In Clark County, as of 1/6/2018, the total number of confirmed cases of influenza during the season was 585 and the percentage of emergency room (ER) visits for Influenza-like Illness (ILI) increased from 5.9% in week 52 to 6.8% in week 1. Approximately 52% of area ER visits for ILI were children under 18 years of age. Influenza A was the dominant type circulating. Ten influenza-associated deaths occurred this season in Clark County. Southern Nevada Health District will continue to update the public on the progression of the season and encourage the population to get vaccinated.

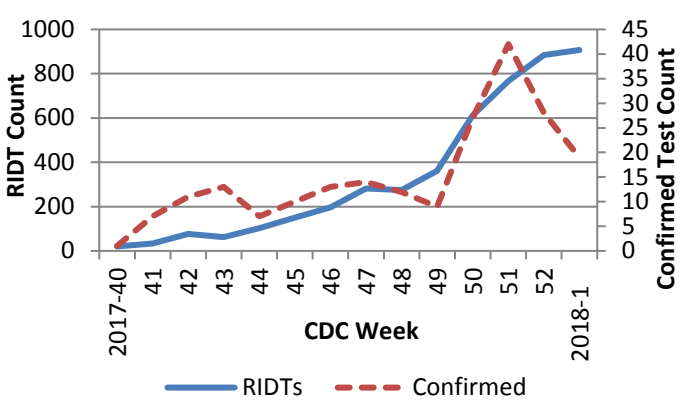
**Table 1: Influenza Report by Age Group, Clark County, NV (CDC Week 40, 2017 to Week 1, 2018)**

Age Group	Deaths	Hospitalizations	Confirmed Cases*
0-4	1	15	19
5-17	1	13	22
18-24	0	16	19
25-49	1	65	92
50-64	2	92	119
65+	5	275	314
<b>Total</b>	<b>10</b>	<b>476</b>	<b>585</b>

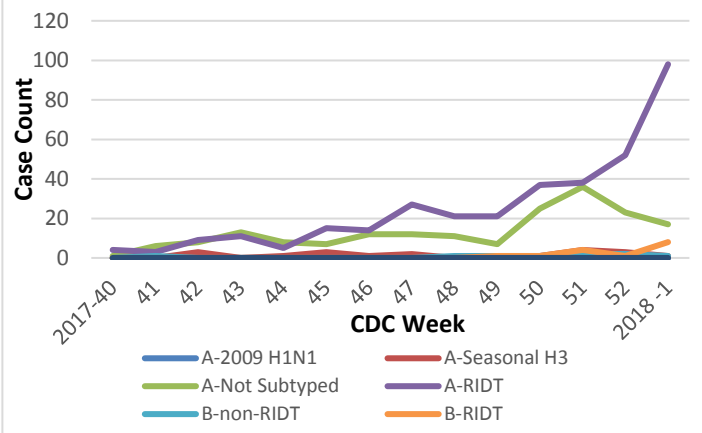
**Table 2: Influenza Report by Virus Strain, Clark County, NV (CDC week 40, 2017 to Week 1, 2018)**

Influenza Type	Deaths	Hospitalizations	Confirmed Cases*
Influenza A (2009 H1N1)	0	0	0
Influenza A (seasonal H3)	3	14	20
Influenza A (not sub-typed)	1	91	186
Influenza A (RIDT)	6	355	355
Influenza B (non-RIDT)	0	1	9
Influenza B (RIDT)	0	15	15
Influenza (unknown type, RIDT)	0	0	0
<b>Total</b>	<b>10</b>	<b>476</b>	<b>585</b>

**Figure 1: Weekly Count of Reported Positive Influenza Tests by Test Type\*\*, Clark County, NV**

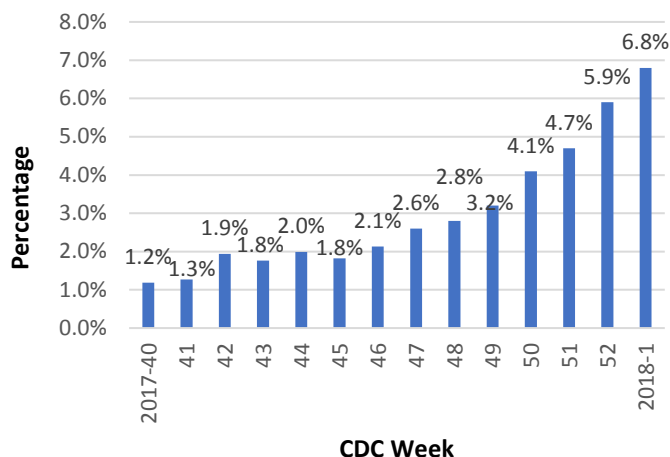


**Figure 2: Distribution of Confirmed Cases\* by Virus Strain, Clark County, NV**

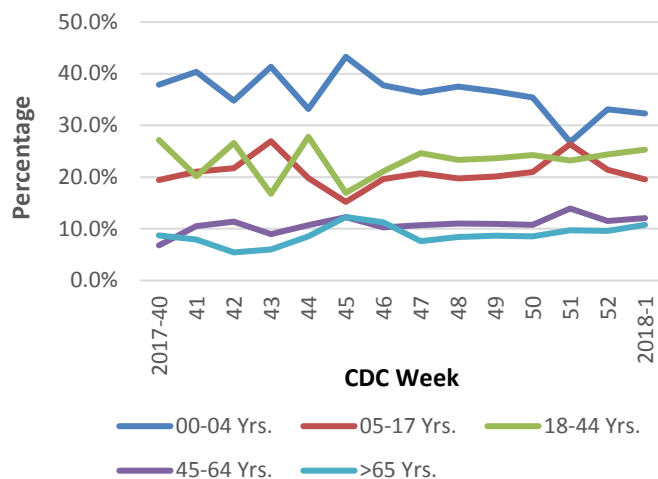


## Southern Nevada Weekly Influenza Surveillance Snapshot CDC Week 1, December 31, 2017 – January 6, 2018

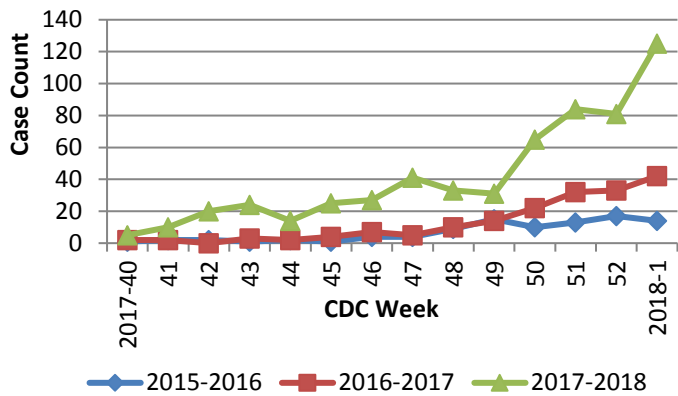
**Figure 3: Weekly Percentage of Emergency Room Visits for Influenza-Like Illness, Clark County, NV**



**Figure 4: Age Distribution of Emergency Room Visits for Influenza-Like Illness, Clark County, NV**



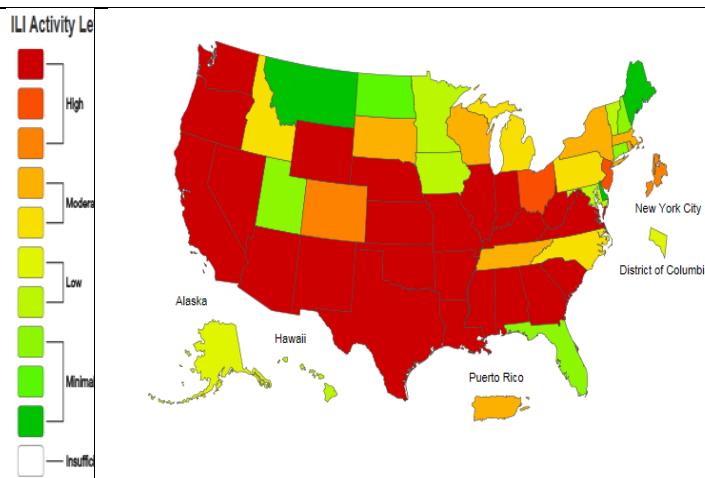
**Figure 5: Seasonal Trends of Confirmed Cases\* of Influenza, Clark County, NV**



**Total Confirmed Cases\*(Week 40 – 1):**  
**585 (2017-2018), 189 (2016-2017), 95 (2015-2016)**

**Figure 6: National ILI Activity Level- 2017-18 Influenza Season**  
**CDC Week 1 ending January 06, 2018**

<https://gis.cdc.gov/grasp/fluview/main.html>



\*Confirmed Cases= Laboratory confirmed by PCR, culture, immunofluorescent DFA antigen staining, IHC staining, rapid influenza diagnostic tests (RIDTs) with hospitalizations for 24 hours or longer, or RIDTs with death.

\*\*Test Type-RIDT: Rapid Influenza Diagnostic Test

Test Type- Confirmed: PCR, Culture, Immunofluorescent DFA Staining

Note: The total number of confirmed cases presented in this report is subject to change due to possible delay in reporting and processing.

For additional information regarding SNHD influenza surveillance, please visit us at

<http://southernnevadahealthdistrict.org/stats-reports/influenza-surveillance.php>.

**Office of Epidemiology and Disease Surveillance (OEDS)**

Zuwen Qiu-Shultz, MPH, Epidemiologist