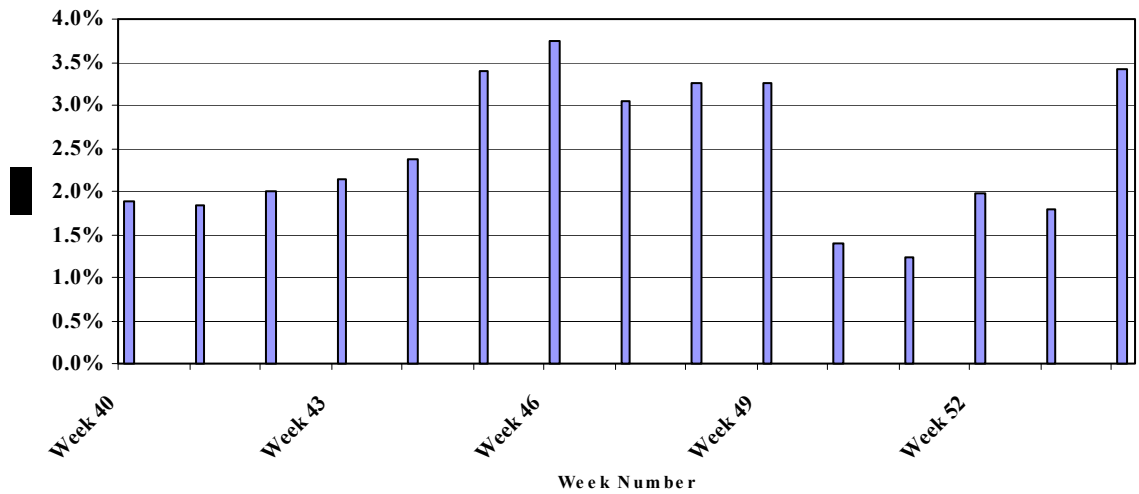


**Date:** January 17, 2003  
**To:** Health Care Provider  
**From:** Linh Nguyen, MPH, Epidemiologist  
**Subject:** Influenza Report for Week 2 (January 5-11, 2003)

**Criteria for inclusion as a case of Influenza-Like Illness (ILI) are fever  $\geq 100^{\circ}\text{F}$  ( $37.8^{\circ}\text{C}$ ) and cough or sore throat.** Health care providers wishing to participate in the ongoing Clark County Health District (CCHD) Influenza Surveillance Program should contact Linh Nguyen, Surveillance Coordinator, at (702) 383-1378.

Two hundred and twenty cases of ILI were reported during week 2. The weighted average over the eight reporting sites was **3.4%**, which is higher than the national baseline of 1.9%. The percentage of deaths attributed to pneumonia and influenza (P&I) in Las Vegas was **9.1%**. The national P&I mortality for week 2 is not yet available. The national P&I mortality for week 1 was 6.8%. The percentages of ILI cases in Clark County for weeks 40 to 52, 2002 and for week 1 to 2, 2003 of the 2002-2003 surveillance season are presented in the following figure. The percentage of ILI might be skewed for weeks 50 to 1, since ILI data from several sentinel sites was not available.

**Percentage of Influenza-Like Illnesses (ILI) Cases By Week  
 Weighted Average, Weeks 40-52, 2002 and Weeks 1-2, 2003**



Since the mid-1990's, several hundreds of cases of acute encephalopathy have been reported in Japanese children diagnosed with influenza. These cases have been characterized by fever and rapid onset of encephalopathy and resulted in a high frequency of neurological sequelae and mortality. Most of the children have had laboratory-confirmed evidence of influenza. To determine if a similar pattern of influenza-associated encephalopathy cases is occurring in the U.S., the Centers for Disease Control and Prevention (CDC) is requesting information on any individual <18 years old meeting the following criteria:

- Altered mental status, or personality change, lasting >24 hours, occurring within five days of the onset of an acute febrile respiratory illness.
- Laboratory or rapid diagnostic test evidence of acute influenza virus infection associated with the respiratory illness.
- Diagnosed in the U.S.

Please report any cases that have occurred after December 31, 1997 to the Clark County Health District Office of Epidemiology at 702-383-1378. The reports will be forwarded to the CDC. The information will be used to determine if additional investigation is warranted.