



---

**SOUTHERN NEVADA  
HEALTH DISTRICT  
FY 2010-2011  
TENTATIVE BUDGET**



# TENTATIVE 2010-2011 GENERAL FUND BUDGET

---

<b>Beginning Fund Balance</b>	<b>\$25,117,116 *</b>
<b>Total Revenues</b>	<b>75,954,810</b>
<b>General Fund Expenditures</b>	<b>(75,938,098)</b>
<b>Total Transfers</b>	<b>(6,326,770)</b>
<b>Total Expenditures</b>	<b>(82,264,868)</b>
<b>Ending Fund Balance</b>	<b>\$18,807,058* *</b>

\* Estimate made as of 02/28/2010.

\* \* This represents 25% or 3 months of FY 2011 budgeted expenditures.

# TENTATIVE 2010-2011 GENERAL FUND BUDGET

---

## Transfers:

Capital Reserve Transfer	\$2,243,864
Proprietary Fund Transfer (SNPHL)	2,078,658
Liability Reserve Transfer	300,000
Bond Reserve Transfer	<u>1,704,248</u>
Total	\$6,326,770



# Tentative Budget FY 2010-2011

---

## GENERAL FUND REVENUE HIGHLIGHTS **DECREASES** FROM FY 2010 ESTIMATES

	FY10	FY11	\$\$\$ Diff	% Diff
<b>Fees for Services</b>	\$ 6,783,214	\$ 6,214,016	\$ (569,198)	-8%
<b>General Receipts</b>	\$ 1,508,125	\$ 1,015,700	\$ (492,425)	-33%
<b>State</b>	\$ 1,385,705	\$ 938,394	\$ (447,311)	-32%
<b>County Property Tax</b>	\$ 24,942,525	\$ 23,869,026	\$ (1,073,499)	-4%

# Tentative Budget FY 2010-2011

## GENERAL FUND REVENUE HIGHLIGHTS INCREASES FROM FY 2010 ESTIMATES

	FY10	FY11	\$\$\$ Diff	% Diff	
<b>Program Contracts</b>	\$ 2,593,306	\$ 2,779,428	\$ 186,122	7%	
<b>Federal Grants</b>	\$ 1,598,838	\$ 9,084,411	\$ 7,485,573	468%	**
<b>Regulatory Fees</b>	\$ 23,328,057	\$ 23,481,444	\$ 153,387	1%	
<b>Federal through State</b>	\$ 7,734,823	\$ 8,036,553	\$ 301,730	4%	
<b>Title XIX</b>	\$ 501,000	\$ 535,838	\$ 34,838	7%	
<b>Overall Revenue</b>	\$ 70,375,593	\$ 75,954,810	\$ 5,579,217	8%	

\*\*Eighty-four percent of the CPPW grant will be passed through to community partners.

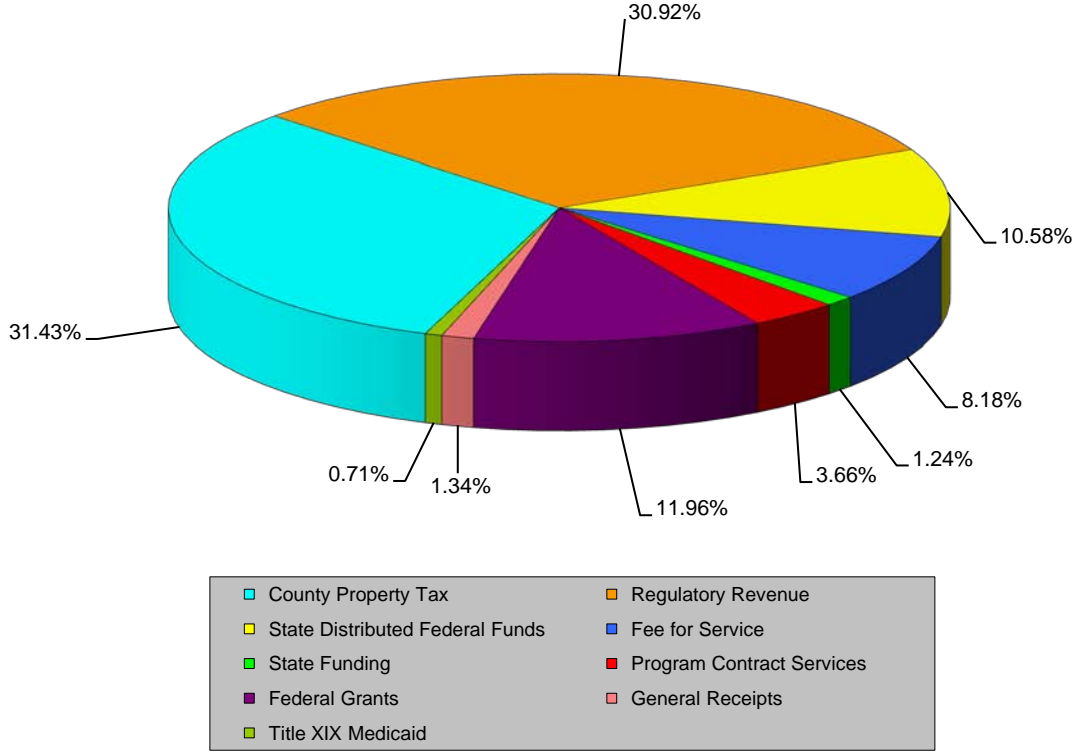


# Tentative Budget FY 2010-2011

## REVENUE PERCENTAGE BY TYPE:

		<b>FY10</b>	<b>FY11</b>
		<b>Estimate</b>	<b>Tentative</b>
<b>State</b>		2%	1%
<b>Federal direct &amp; passed-thru State</b>		13%	23%
<b>County Property Tax</b>		36%	31%
<b>Regulatory Revenue and Fees</b>		49%	45%
(Includes EH permit fees, Health Cards, Title XIX Medicaid Fee for service, Program Contracts, General Receipts)			

# FY11 Tentative Budget Revenue Sources for a total of \$75,954,810



# Comparison of Expenditure Summary to FY 2010

---

- FY 2011 Personnel Expenditures will be 3.1% higher than FY 2010 Budget
- FY 2011 overall Expenditures will be 7.9% higher than FY 2010 Budget. CPPW grant represents \$7,212,346 or 9.5% of FY11 total expenditures.
- FY 2011 Services and Supplies will be 23.1% higher than the FY 2010 budget due to grants (CPPW, H1N1)

# Tentative Budget FY 2010-2011

---

## GENERAL FUND EXPENDITURE HIGHLIGHTS

There are no new FTE's being requested for FY 2011:

○ Administration Division	0.0
○ Nursing Division	0.0
○ Environmental Health Division	0.0
○ Community Health Division	0.0
○ SNPHL	<u>0.0</u>
Total	0.0

# Tentative Budget FY 2010-2011

---

## CURRENT COST CONTAINMENT MEASURES

- Vacant positions left unfilled
- Reduced overtime for non-H1N1 activities
- Reduced non-grant travel
- Voluntary furlough
- Negotiated lease cost reductions
- Instituted a “paperless” policy
- Number of company issued cell phone users decreased
- Installed zeriscape landscaping

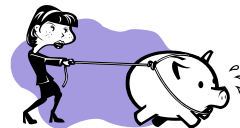
# Tentative Budget FY 2010-2011

---

## GENERAL FUND EXPENDITURE HIGHLIGHTS

- Rental costs were reduced at Spring Valley and East Las Vegas locations.
- FY11 overall expenses are 7.9% higher when compared to FY10; including 5.5% scheduled salary increase.\*

- \*Salary increases are required by the Collective Bargaining Agreement (CBA)



# Tentative Budget FY 2010-2011

---

## **CAPITAL RESERVE FUND EXPENDITURE HIGHLIGHTS**

- \$88,000 Vehicles
- \$45,000 Replacement of Vaccine Refrigerators
- \$392,000 Network and IT system upgrades
- \$1,461,864 VAX Replacement
- \$210,000 LIMS Upgrade

# Tentative Budget FY 2010-2011

---

## **PROPRIETARY FUND – SOUTHERN NEVADA PUBLIC HEALTH LABORATORY**

- Expenditures total \$2,078,658  
(excludes depreciation)
- Revenue is based on grant funding  
(57%) and District funding (43%)

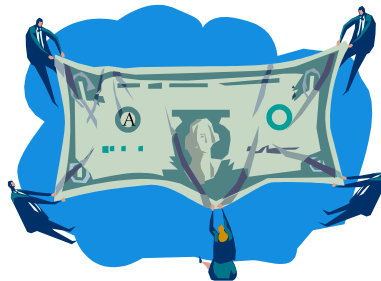
# Tentative Budget FY 2010-2011

---

## BOND RESERVE FUND

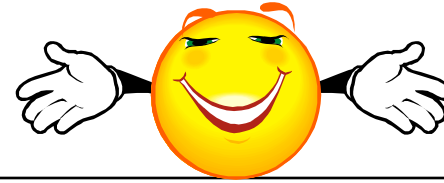
A transfer of \$1,704,248 has been budgeted for a transfer to a debt reserve fund.\*

\*One-fourteenth of funds received from Clark County



# Questions?

---



○



# Thank you.

---

