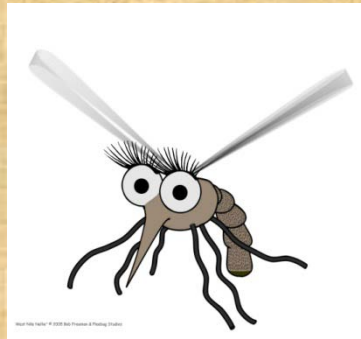


# Vector Control: Mid Season Update



**Vivek Raman**

**Environmental Health Supervisor**

**Board of Health – 8.27.09**

# Component Updates



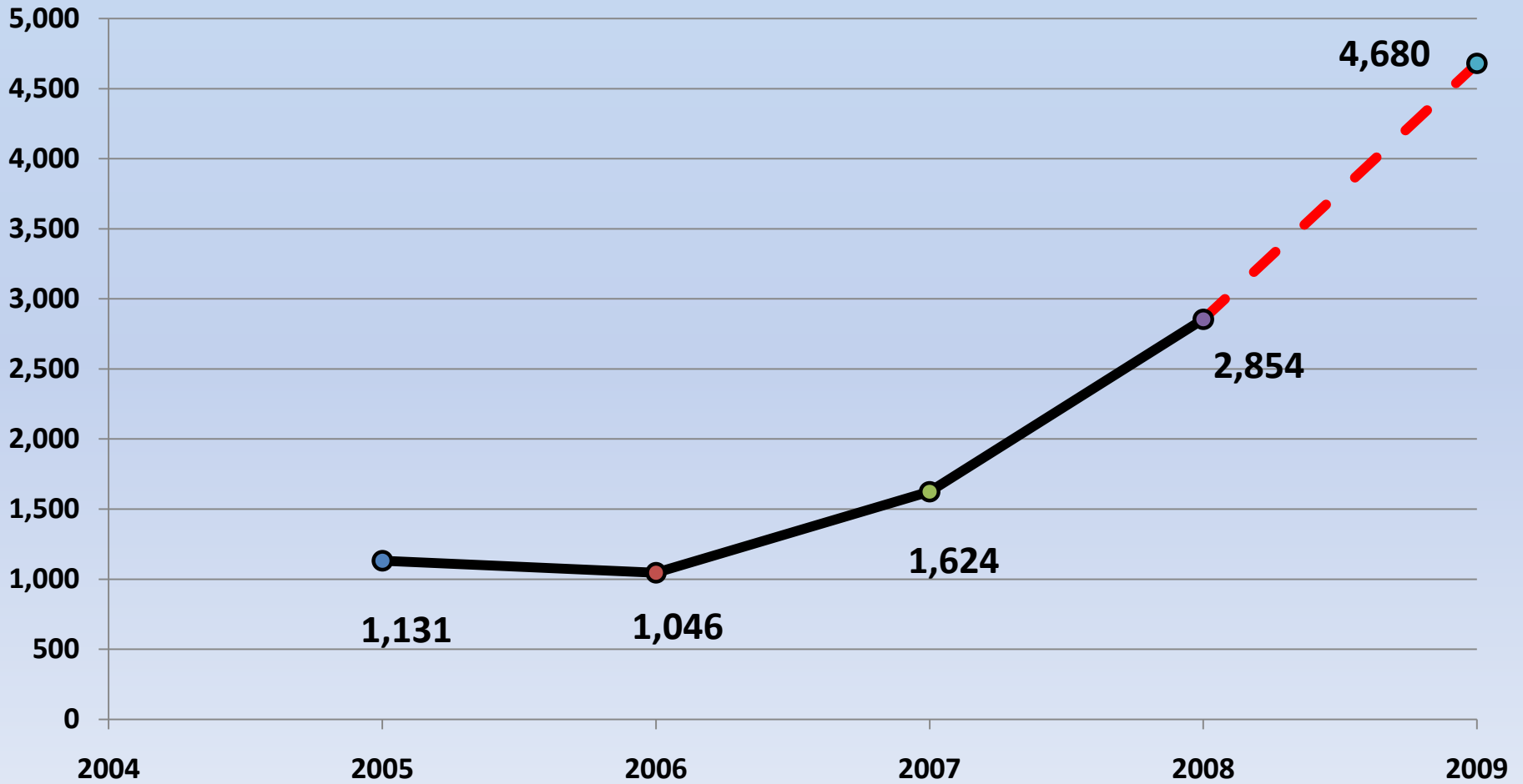
**Citizen Complaints**

**WNV Surveillance**

**Human Case Investigations**

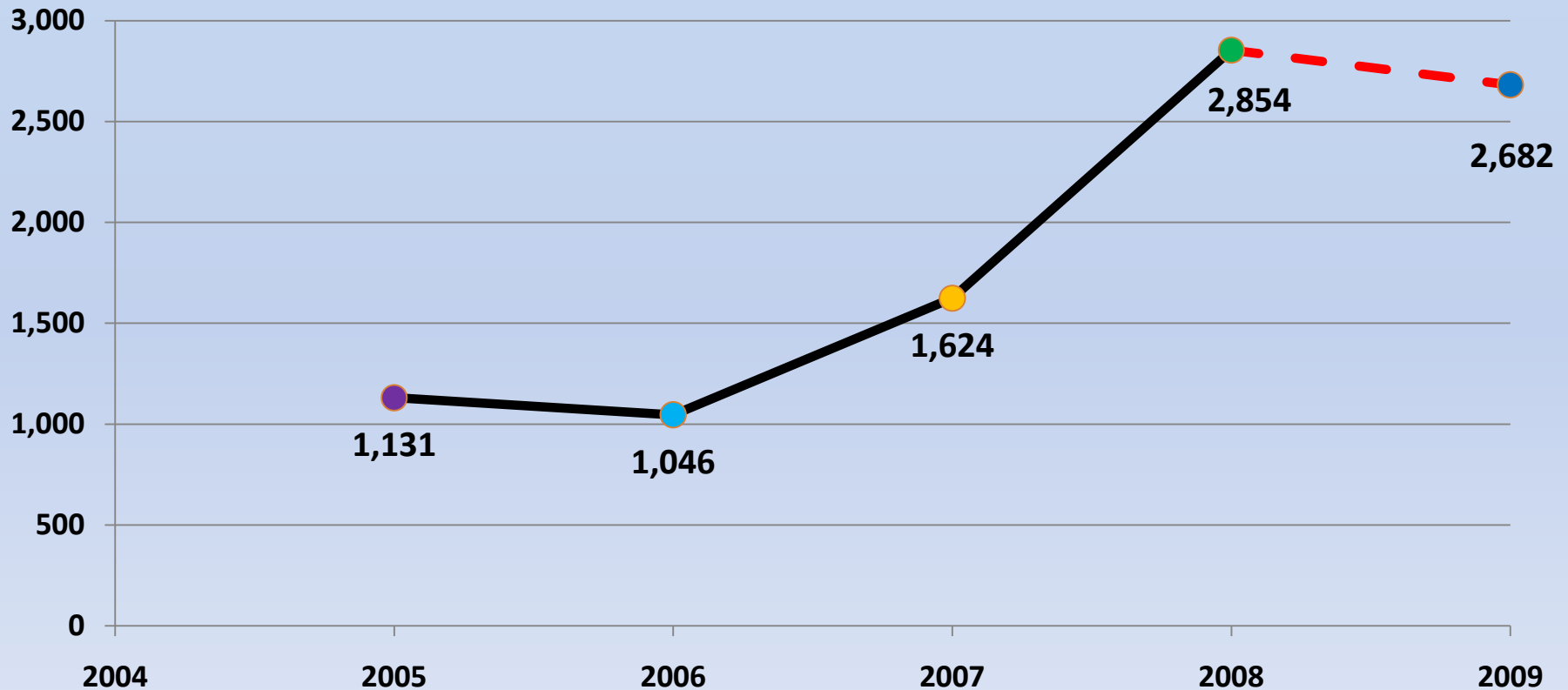
**Looking Ahead**

# Citizen Complaints 2005 - 2008 (projected 2009)



4/23/09: **802** comp vs. 489 this time '08: **65%**↑

## Citizen Complaints 2005 - 2008 (projected 2009)



**8/12/09: 2091 comp vs. 2230 this time '08: 6% ↓**  
**62% Closure Rate**

# Cost Efficiency & Fee Recovery



'VECTOR'

Fee Recovery

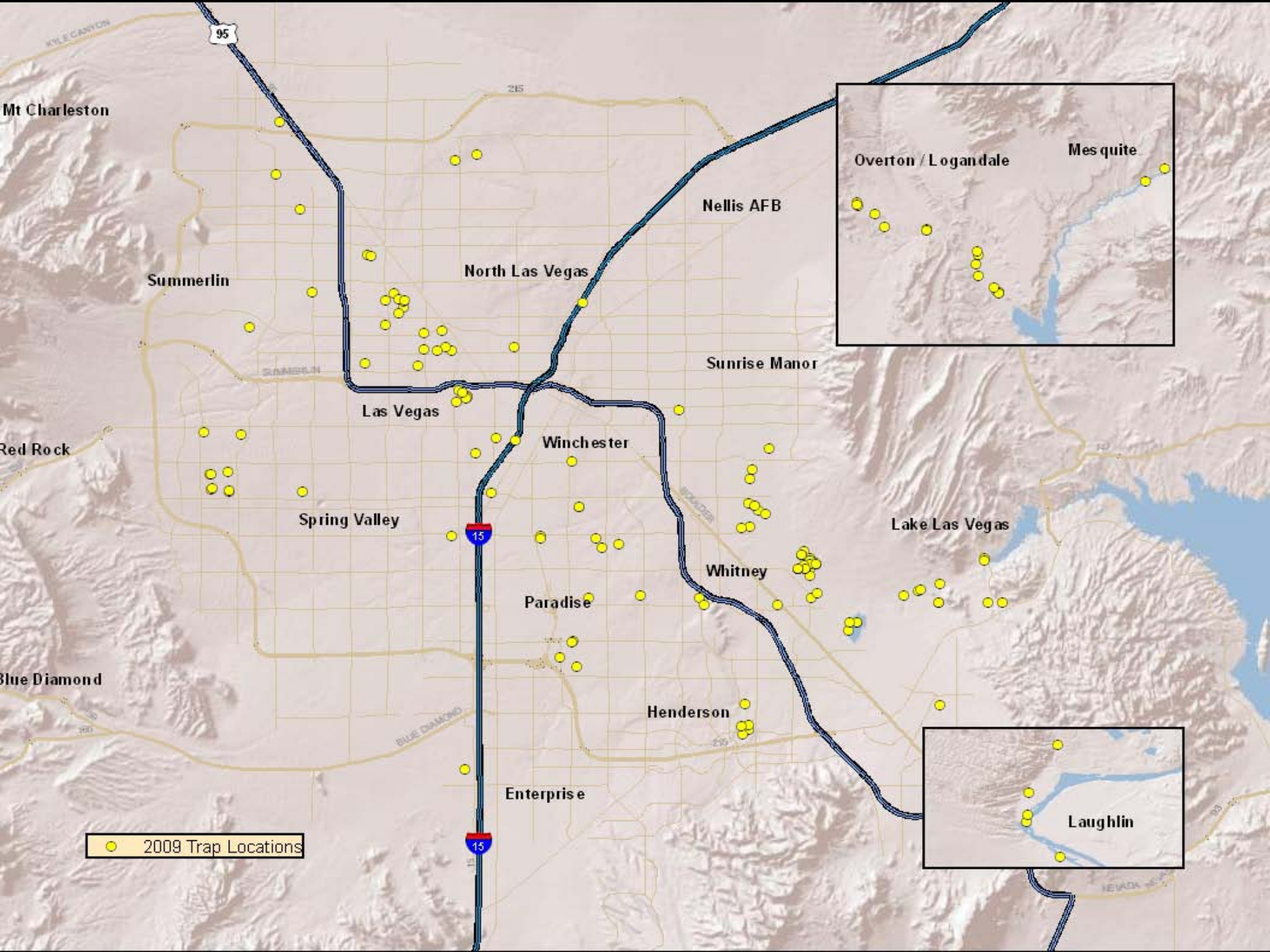
Total

FY '07 – '08: \$83,589.12 - \$3,104.12 = \$80,485.00

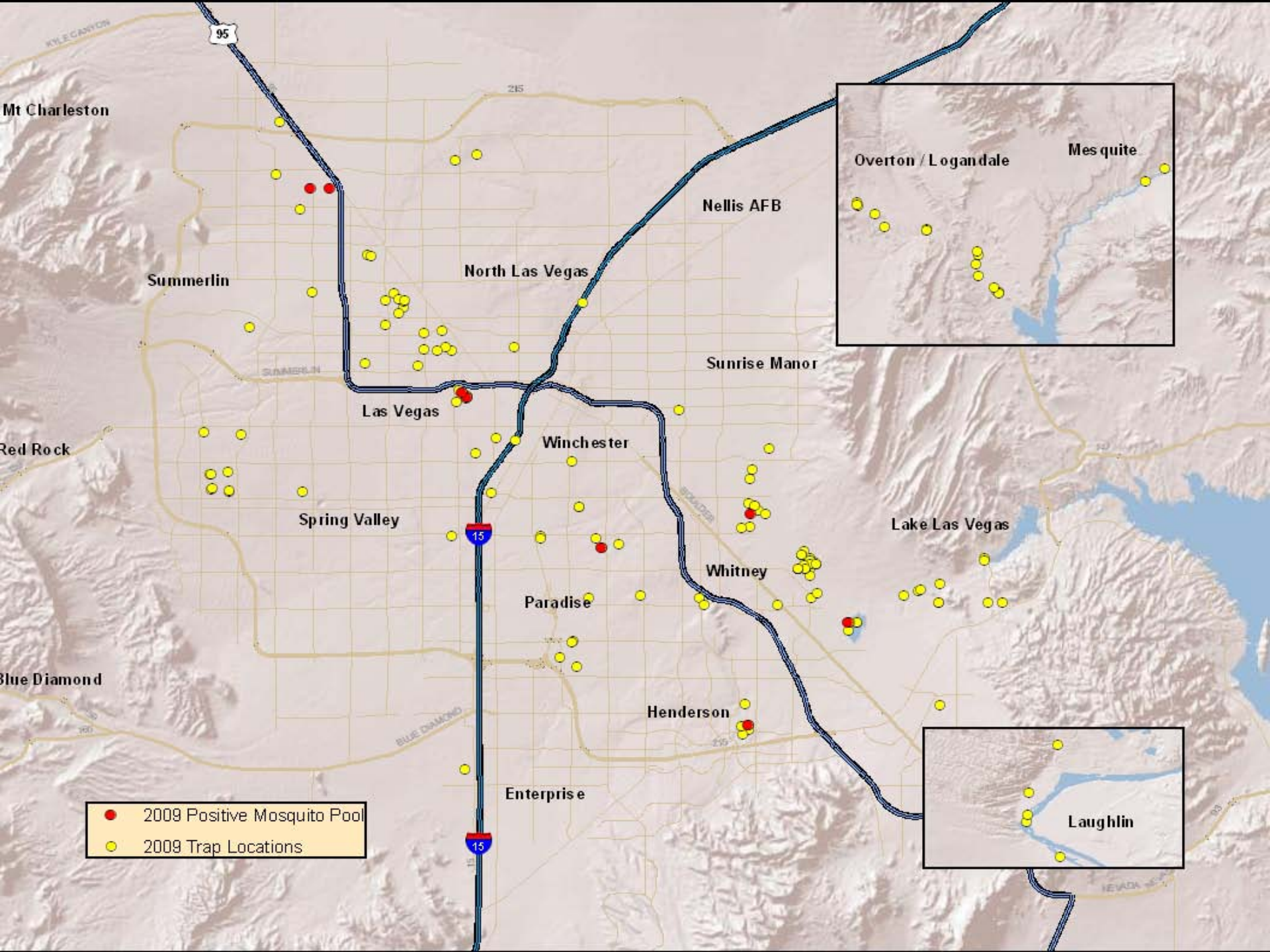
FY '08 – '09: \$62,915.81 - \$23,638.02 = \$39,277.79

Decrease of **\$41,207** or **51.19%**

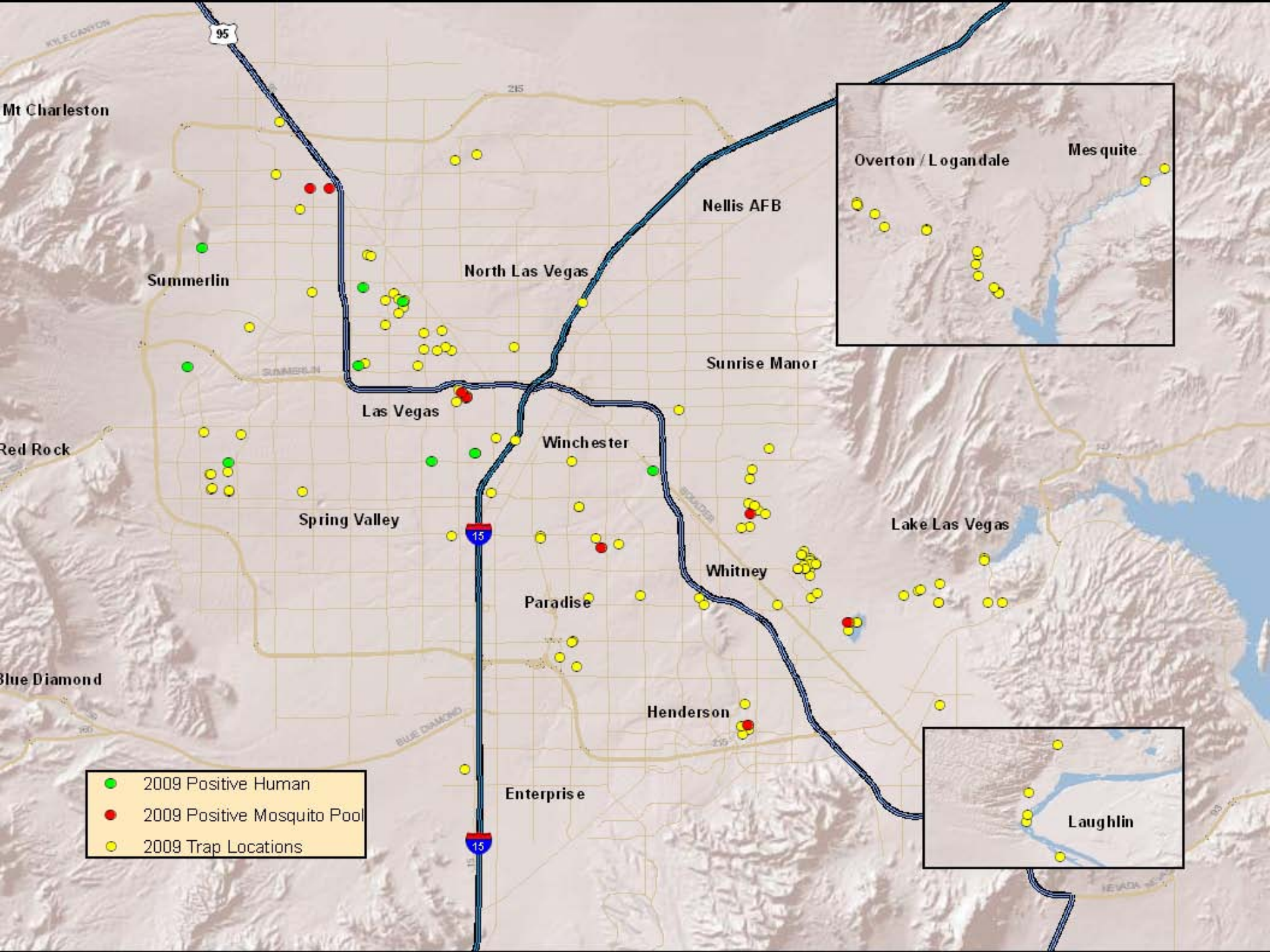




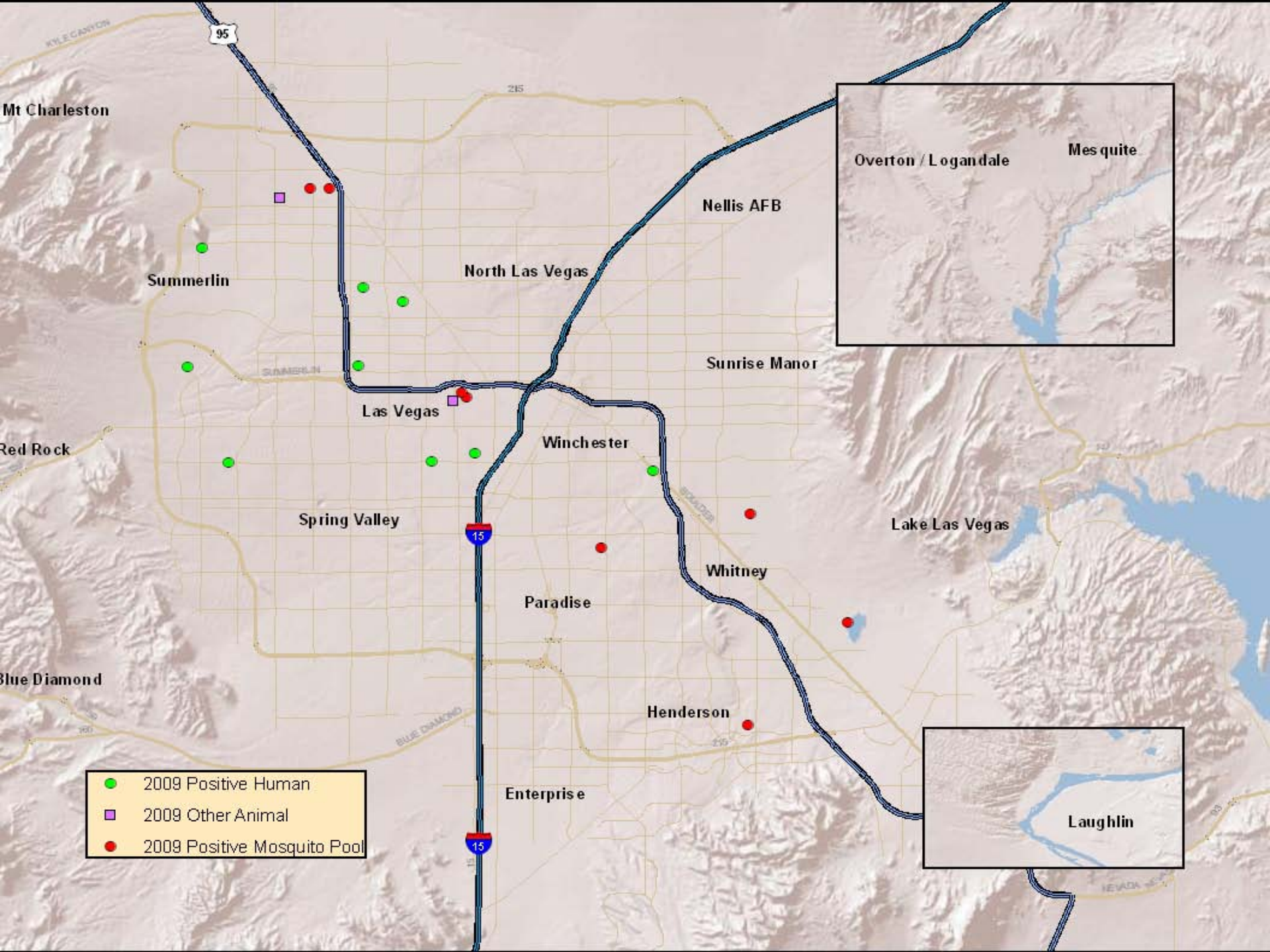
● 2009 Trap Locations



- 2009 Positive Mosquito Pool
- 2009 Trap Locations



- 2009 Positive Human
- 2009 Positive Mosquito Pool
- 2009 Trap Locations



# Looking Ahead...

Vector Control  
Regulations

Renegotiate Interlocal  
Agreement

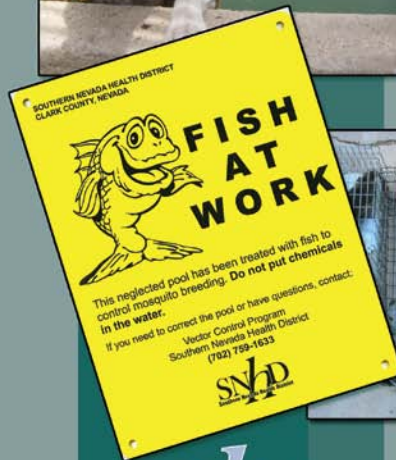
ELC Grant Application

Mobile Data  
Management System



2008

Zoonotic  
Infectious  
Disease:  
Surveillance  
and Control



Vector Control Program  
Environmental Health Division



# Collaborators



**SPRINGS PRESERVE**  
[www.springspreserve.org](http://www.springspreserve.org)

US-95 & VALLEY VIEW BLVD.  
T. 702.822.7700

