



---

**SOUTHERN NEVADA  
HEALTH DISTRICT  
FY 2008-2009  
TENTATIVE BUDGET**



# TENTATIVE 2008-2009 GENERAL FUND BUDGET

---

<b>Beginning Fund Balance</b>	<b>\$14,970,946</b>
<b>Total Revenues</b>	<b>73,502,713</b>
<b>General Fund Expenditures</b>	<b>(71,559,215)</b>
<b>Total Transfers</b>	<b>(7,240,436)</b>
<b>Total Expenditures</b>	<b>(78,799,651)</b>
<b>Ending Fund Balance</b>	<b>\$ 9,674,008</b>

# TENTATIVE 2008-2009 GENERAL FUND BUDGET

---

## Transfers:

Capital Reserve Transfer	4,014,000
Proprietary Fund Transfer (SNPHL)	1,926,436
Liability Reserve Transfer	300,000
Bond Reserve Transfer	<u>1,000,000</u>
Total	7,240,436



# Tentative Budget FY 2008-2009

---

## GENERAL FUND REVENUE HIGHLIGHTS **DECREASES** FROM FY 2008 ESTIMATES

- Program contract services: \$ 93,552 or 5.32%
- Federal funds distributed by State: 118,056 or 1.62%

# Tentative Budget FY 2008-2009

---

## GENERAL FUND REVENUE HIGHLIGHTS INCREASES FROM FY 2008 ESTIMATES

- Federal Grants \$ 32,578 or 2.08%
- General Receipts: 152,600 or 14.43%
- Regulatory Revenues: 785,094 or 3.31%
- Fee for Service 1,184,101 or 18.59%
- County Property Tax: 2,037,840 or 8.00%  
(3.5 Cents per \$100)

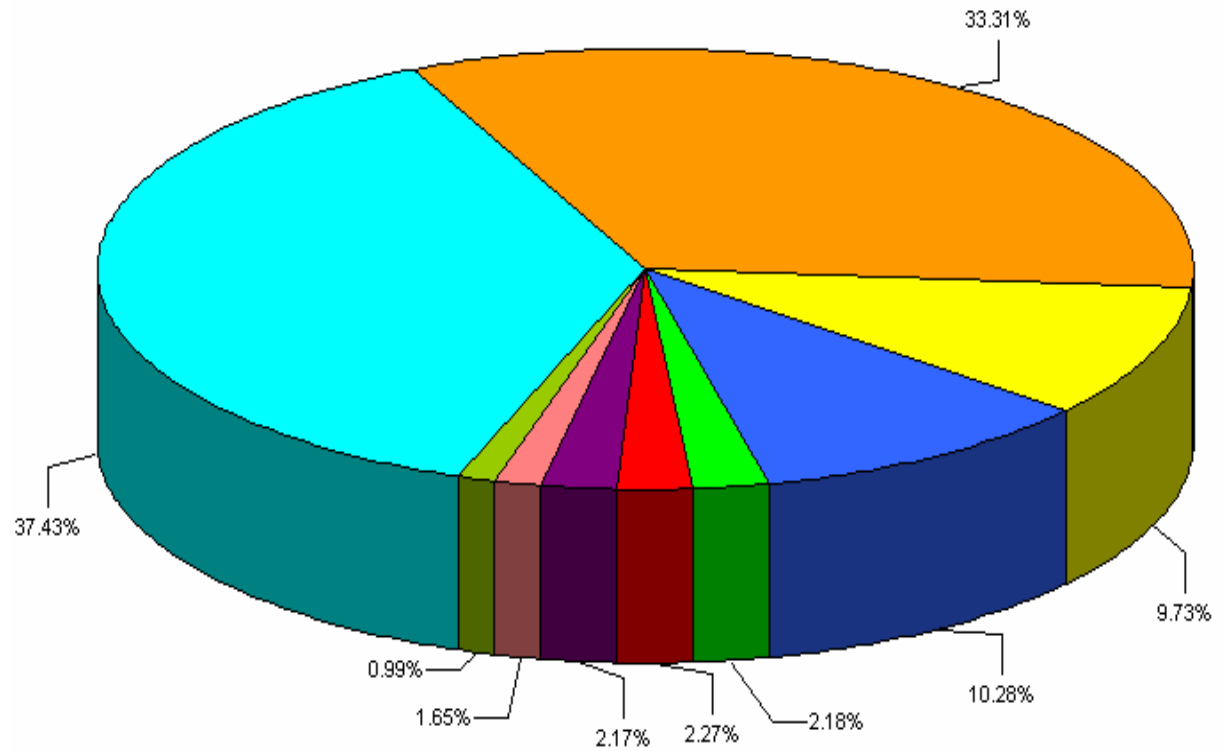


# Tentative Budget FY 2008-2009

## REVENUE PERCENTAGE BY TYPE:

	FY 2008 Estimate	FY 2009 Tentative
○ State	2%	2%
○ Federal direct & pass-thru State	14%	12%
○ County Property tax	36%	37%
○ Regulatory Revenue and Fees (includes EH permit fees, Health cards, Fee for service, program contract services, general receipts, and Title XIX Medicaid)	48%	49%

# FY09 Tentative Budget Revenue Sources for a total of \$73,502,713



- County Property Tax
- Regulatory Revenue
- State Distributed Federal Funds
- Fee for Service
- State Funding
- Program Contract Services
- Federal Grants
- General Receipts
- Title XIX Medicaid

# Comparison of Expenditure Summary to FY 2008

---

- FY 2009 Personnel Expenditures will be 2.7% higher than FY 2008 Estimates (COLA not budgeted)
- FY 2009 overall Expenditures will be 2.9% higher than FY 2008 Estimates
- FY 2009 Services and Supplies will be 3.7% higher than the FY 2008 Estimates

# Tentative Budget FY 2008-2009

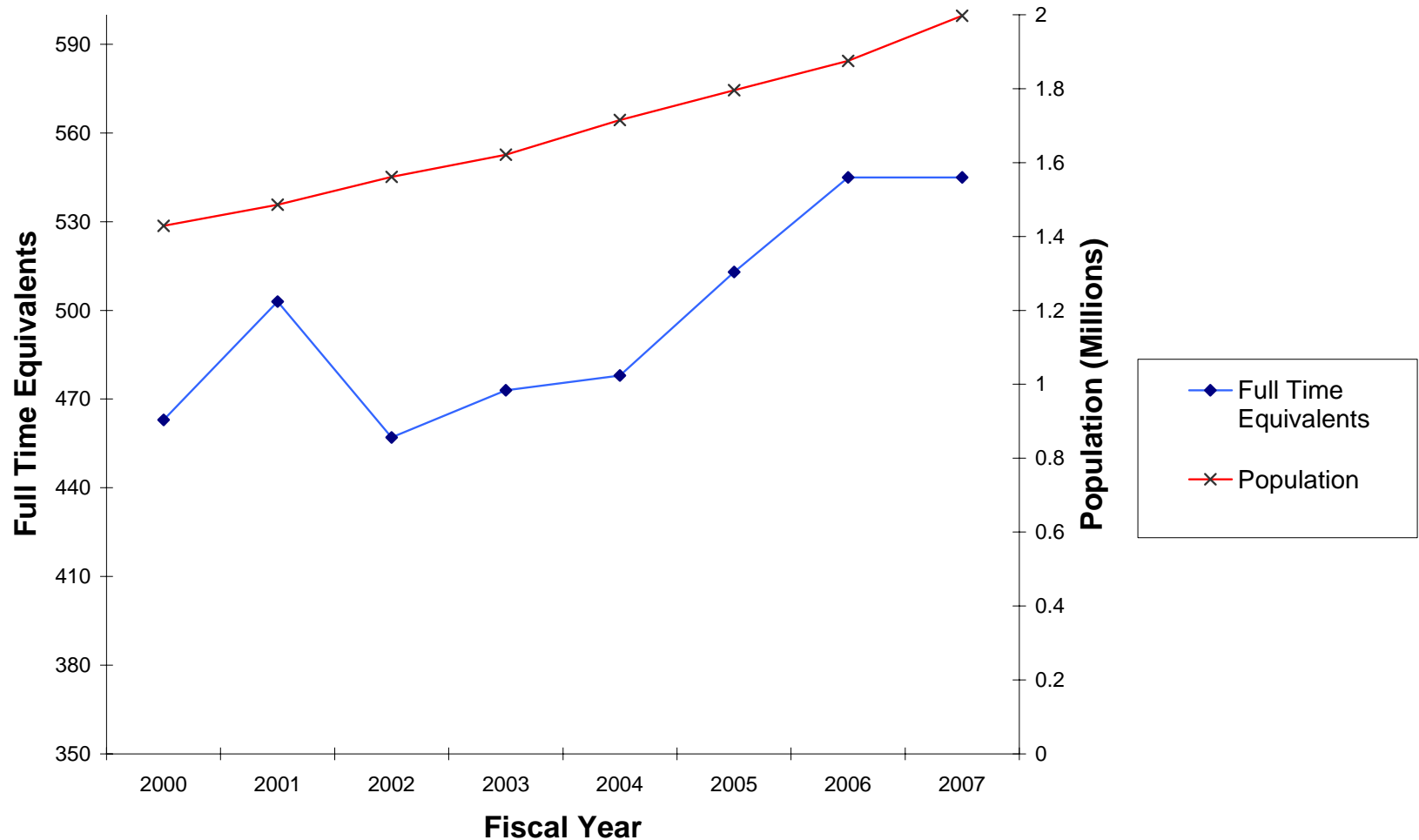
---

## GENERAL FUND EXPENDITURE HIGHLIGHTS

A total of 25 new FTE's are being requested for FY 2009:

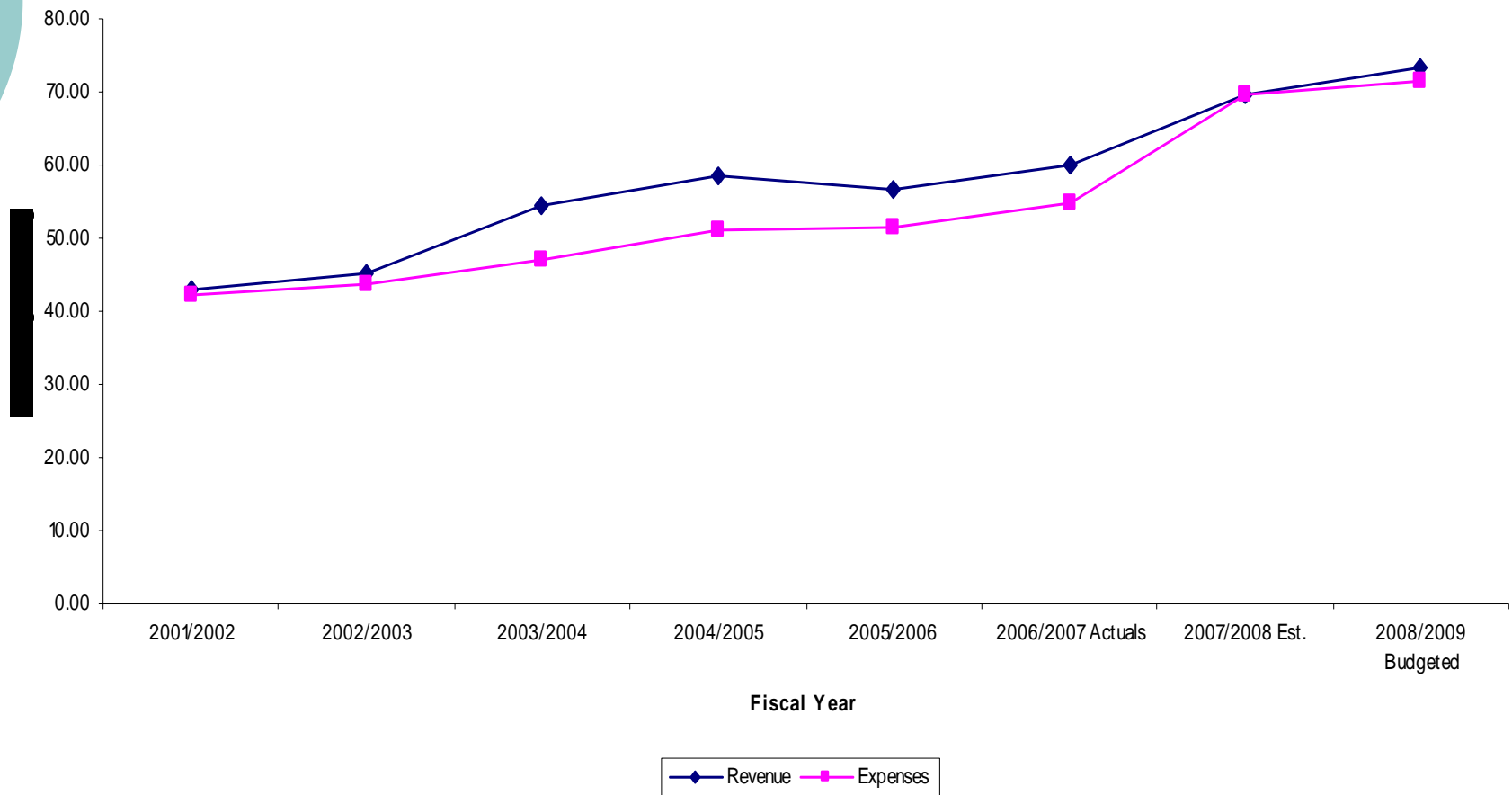
○ Administration Division	6.0
○ Nursing Division	9.0
○ Environmental Health Division	7.0
○ Community Health Division	1.0
○ SNP HL	<u>2.0</u>
Total	25.0

# Comparison of FTE's and Population by Fiscal Year



# Eight-Year Comparison of Revenues and Expenses

8 Year Comparison of Revenues and Expenses

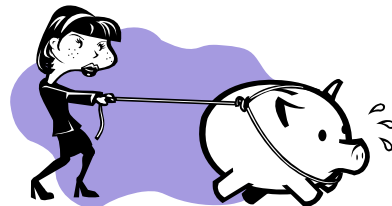


# Tentative Budget FY 2008-2009

---

## GENERAL FUND EXPENDITURE HIGHLIGHTS

- Includes a significant increase in health insurance PEBP rates and no COLA has been budgeted due to Labor Contract expiring
- Includes additional leasing costs for expansion of services to Mesquite, Nevada
- Includes a substantial increase in medical supplies due to additional vaccines that will be administered as a result of new mandate



# Tentative Budget FY 2008-2009

---

## **CAPITAL RESERVE FUND EXPENDITURE HIGHLIGHTS**

- \$149,000 for vehicles
- \$350,000 for remodeling costs
- \$405,000 in network and IT system upgrades
- \$1,111,000 for software upgrades and replacement
- \$1,900,000 for the design and engineering of new facilities

# Tentative Budget FY 2008-2009

---

## **PROPRIETARY FUND – SOUTHERN NEVADA PUBLIC HEALTH LABORATORY**

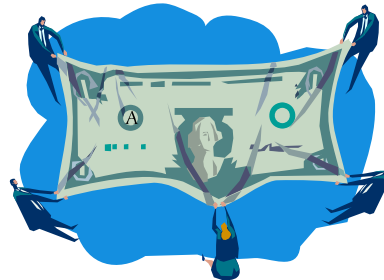
- Expenditures total \$1,926,436
- Revenue is based on grant funding (59%) and District funding (41%)

# Tentative Budget FY 2008-2009

---

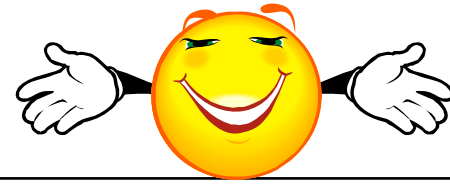
## BOND RESERVE FUND

A transfer of \$1,000,000 has been budgeted for a transfer to a debt reserve fund. Upon approval by the Board of Health, a bond reserve fund will be established.



# Questions?

---



○



# Thank you.

---

